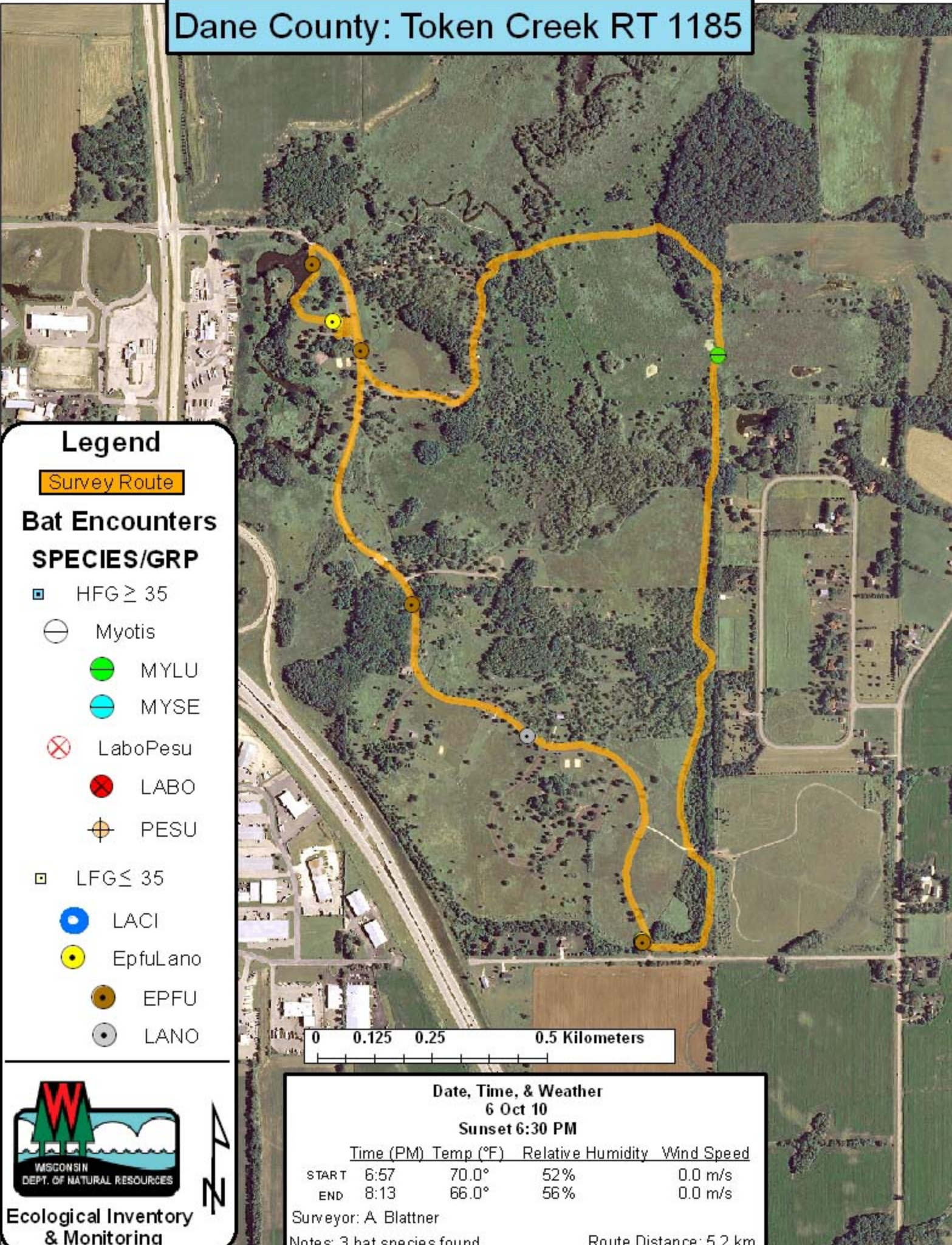


# Dane County: Token Creek RT 1185



**Legend**

**Survey Route**

**Bat Encounters**

**SPECIES/GRP**

▣ HFG ≥ 35

⊖ Myotis

● MYLU

● MYSE

⊗ LaboPesu

● LABO

⊕ PESU

▣ LFG ≤ 35

● LACI

● EpfuLano

● EPFU

● LANO



**Ecological Inventory & Monitoring**

**Date, Time, & Weather**  
 6 Oct 10  
 Sunset 6:30 PM

	Time (PM)	Temp (°F)	Relative Humidity	Wind Speed
START	6:57	70.0°	52%	0.0 m/s
END	8:13	66.0°	56%	0.0 m/s

Surveyor: A. Blattner

Notes: 3 bat species found. Route Distance: 5.2 km