

Racine County: West Racine RT 532

Legend

Survey Route

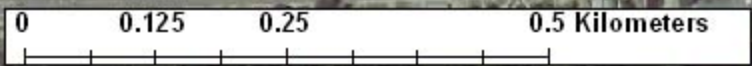
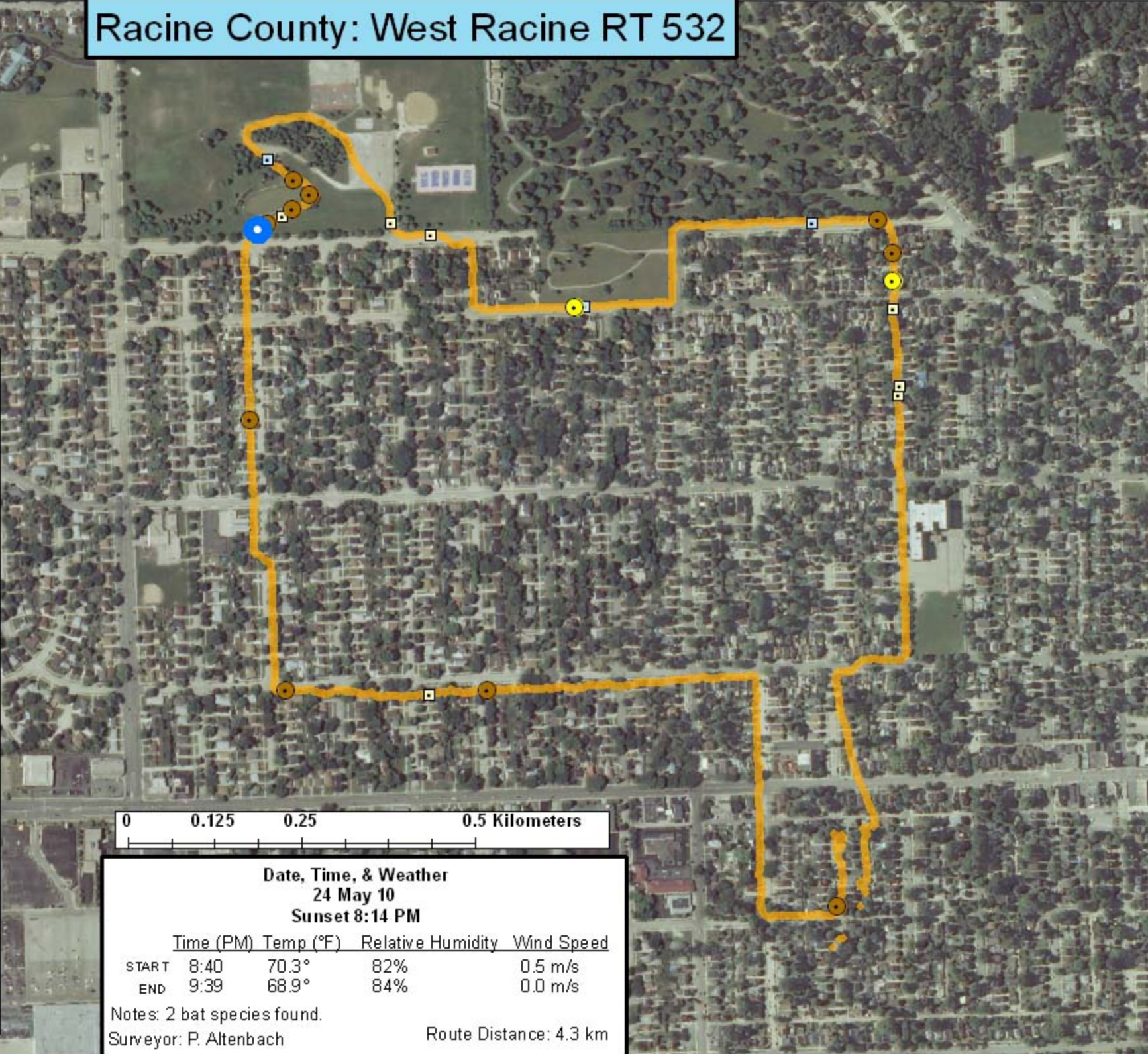
Bat Encounters

SPECIES/GRP

- HFG ≥ 35
- ⊖ Myotis
- MYLU
- MYSE
- ⊗ LaboPesu
- LABO
- ⊕ PESU
- LFG ≤ 35
- LACI
- EpfuLano
- EPFU
- LANO



Ecological Inventory & Monitoring



Date, Time, & Weather
24 May 10
Sunset 8:14 PM

	Time (PM)	Temp (°F)	Relative Humidity	Wind Speed
START	8:40	70.3°	82%	0.5 m/s
END	9:39	68.9°	84%	0.0 m/s

Notes: 2 bat species found.
 Surveyor: P. Altenbach
 Route Distance: 4.3 km