



## SURVEY RESULTS

Juneau County  
 Lake Decorah  
 7 June 2010  
 RT 567

Surveyors: G Emerson & A Badje

Route Length: 6.70 km  
 2 Species Encountered

### Time & Weather

Time (PM)

9:17      11:17

Temperature (F)

62.5      61.0

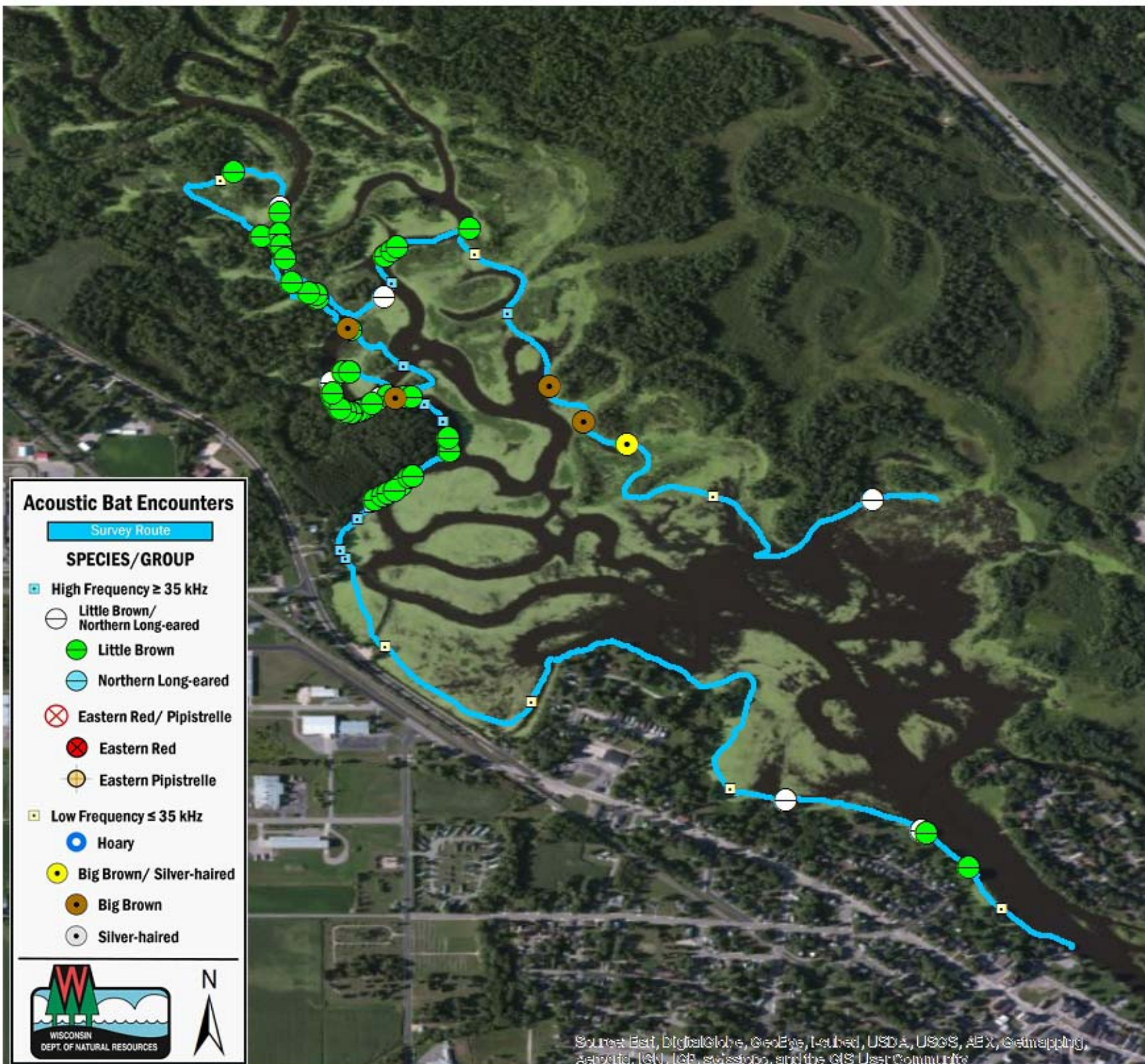
Relative Humidity (%)

82.0      82.0

Wind (m/s)

3.08      4.11

Notes: BATLAS Route  
 Survey completed clockwise



### Acoustic Bat Encounters

Survey Route

#### SPECIES/GROUP

- High Frequency  $\geq 35$  kHz
  - Little Brown/  
Northern Long-eared
  - Little Brown
  - Northern Long-eared
  - ⊗ Eastern Red/ Pipistrelle
  - Eastern Red
  - Eastern Pipistrelle
- Low Frequency  $\leq 35$  kHz
  - Hoary
  - Big Brown/ Silver-haired
  - Big Brown
  - Silver-haired



Source: Esri, DigitalGlobe, GeoEye, Earthstar, USDA, USGS, AeroX, GeoMapping, AeroGRID, IGN, IGE, swisstopo, and the GIS User Community

