



SURVEY RESULTS

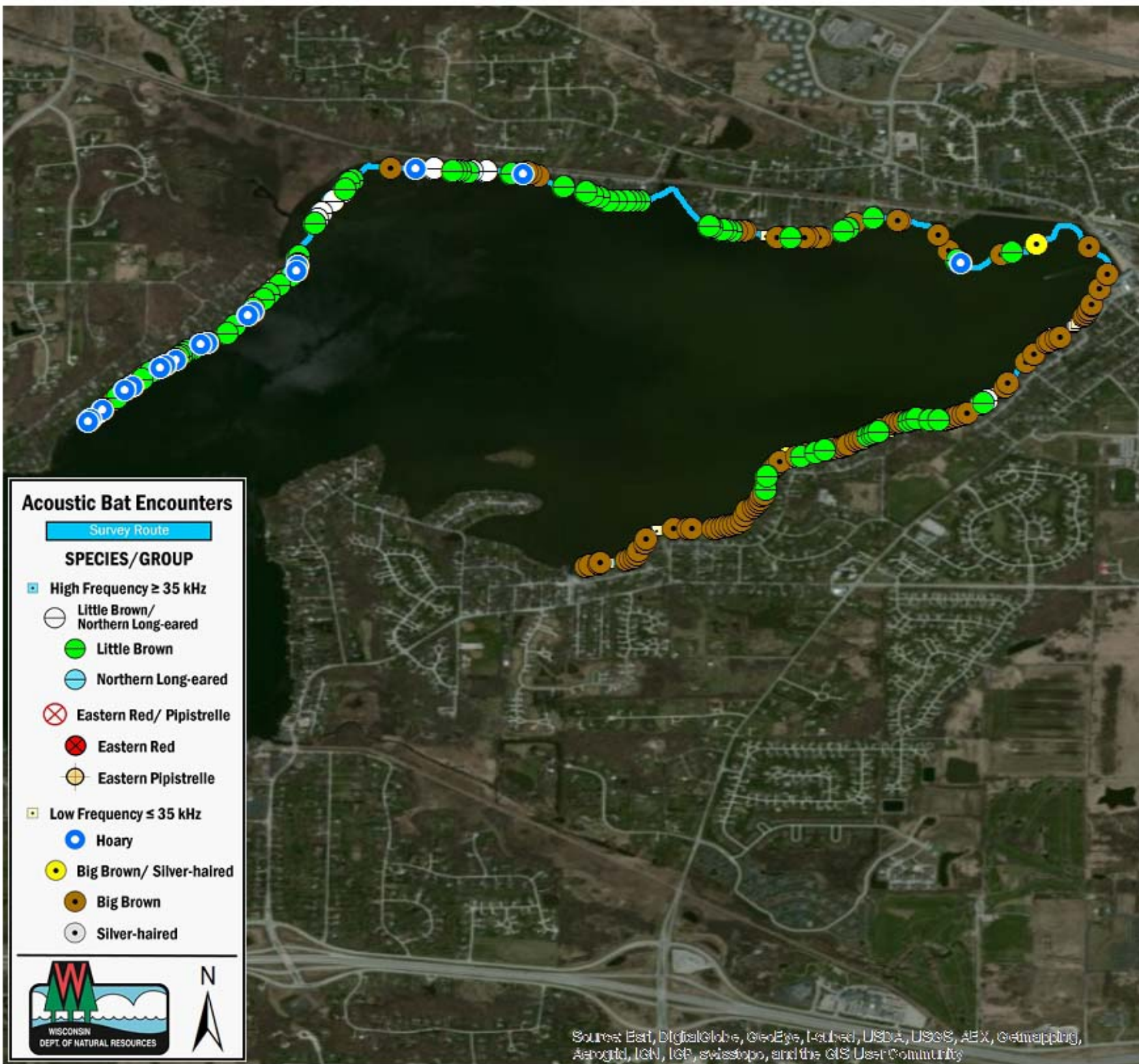
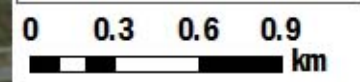
Waukesha County
 Pewaukee Lake
 9 June 2010
 RT 584

Surveyors: M Keenan & B Sadler
 Route Length: 7.94 km
 3 Species Encountered

Time & Weather

Time (PM)	
9:06	11:17
Temperature (F)	
66.2	60.6
Relative Humidity (%)	
54.0	68.0
Wind (m/s)	
4.1	2.0

Notes: BATLAS Route Survey completed counter-clockwise



Acoustic Bat Encounters

- Survey Route
- SPECIES/GROUP**
- High Frequency ≥ 35 kHz
 - Little Brown/Northern Long-eared
 - Little Brown
 - Northern Long-eared
 - ⊗ Eastern Red/ Pipistrelle
 - Eastern Red
 - Eastern Pipistrelle
 - Low Frequency ≤ 35 kHz
 - Hoary
 - Big Brown/ Silver-haired
 - Big Brown
 - Silver-haired



Source: Esri, DigitalGlobe, GeoEye, Earthstar, USDA, USGS, AeroGRID, IGN, IGP, swisstopo, and the GIS User Community