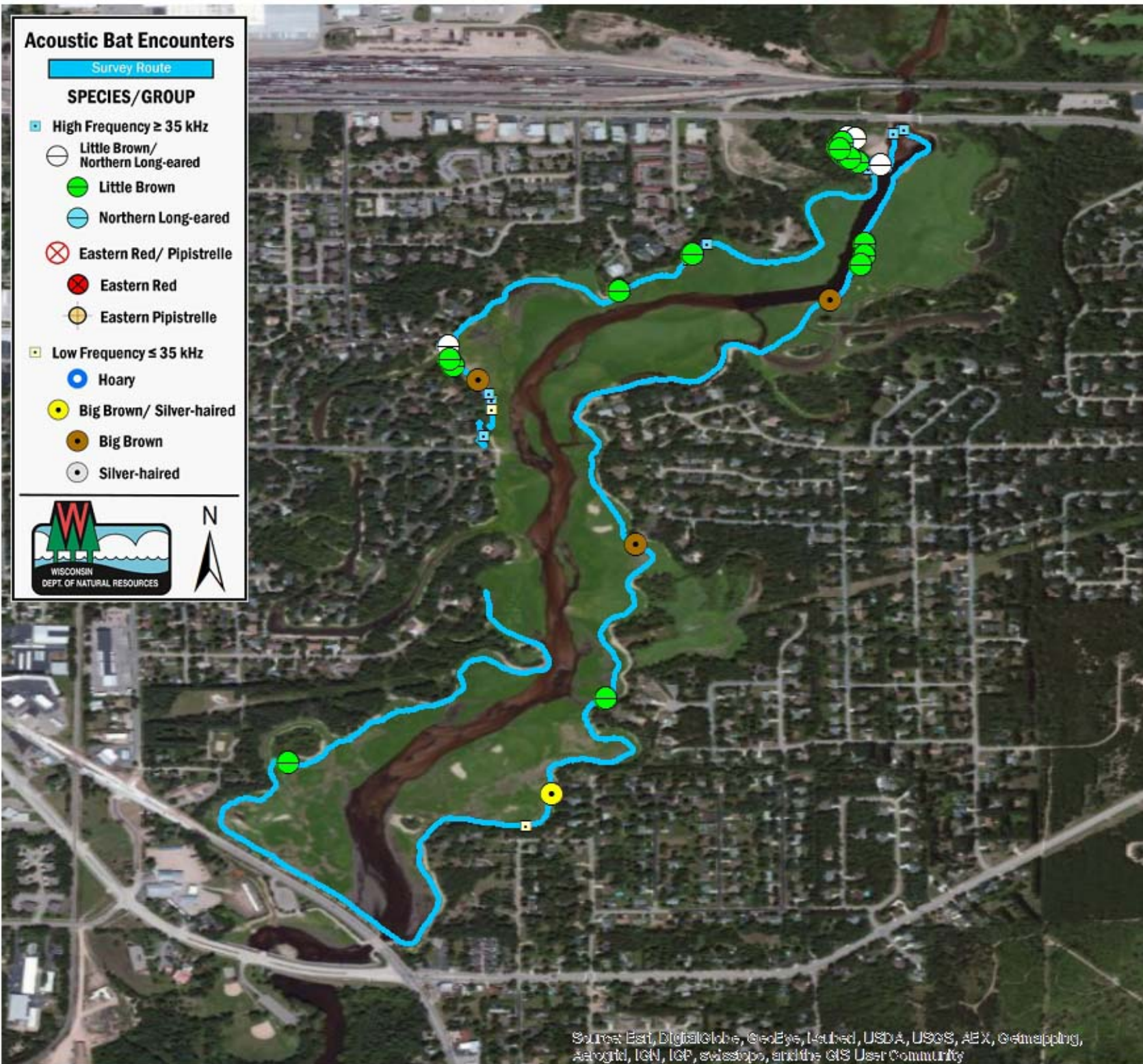


Acoustic Bat Encounters

Survey Route

SPECIES/GROUP

- High Frequency ≥ 35 kHz
 - Little Brown/Northern Long-eared
 - Little Brown
 - Northern Long-eared
 - ⊗ Eastern Red/Pipistrelle
 - Eastern Red
 - Eastern Pipistrelle
- Low Frequency ≤ 35 kHz
 - Hoary
 - Big Brown/Silver-haired
 - Big Brown
 - Silver-haired



SURVEY RESULTS

Portage County
 McDill Pond
 10 June 2010
 RT 602

Surveyors: G Emerson & A Badje
 Route Length: 6.59 km
 2 Species Encountered

Time & Weather

Time (PM)	
9:19	11:16
Temperature (F)	
60.8	59.0
Relative Humidity (%)	
82.0	88.0
Wind (m/s)	
1.56	3.62

Notes: BATLAS Route
 Survey completed clockwise



Source: Esri, DigitalGlobe, GeoEye, Earthstar, USDA, USGS, AeroGRID, IGN, IGP, swisstopo, and the GIS User Community

