



SURVEY RESULTS

Trempealeau County

Trempealeau River 3

10 June 2010

RT 605

Surveyors: J Soine & D Troester

Route Length: 1.43 km

3 Species Encountered

218.40 Passes/Detector Hr

Time & Weather

Time (PM)

10:57 11:22

Temperature (F)

63.7 62.8

Relative Humidity (%)

82.0 84.0

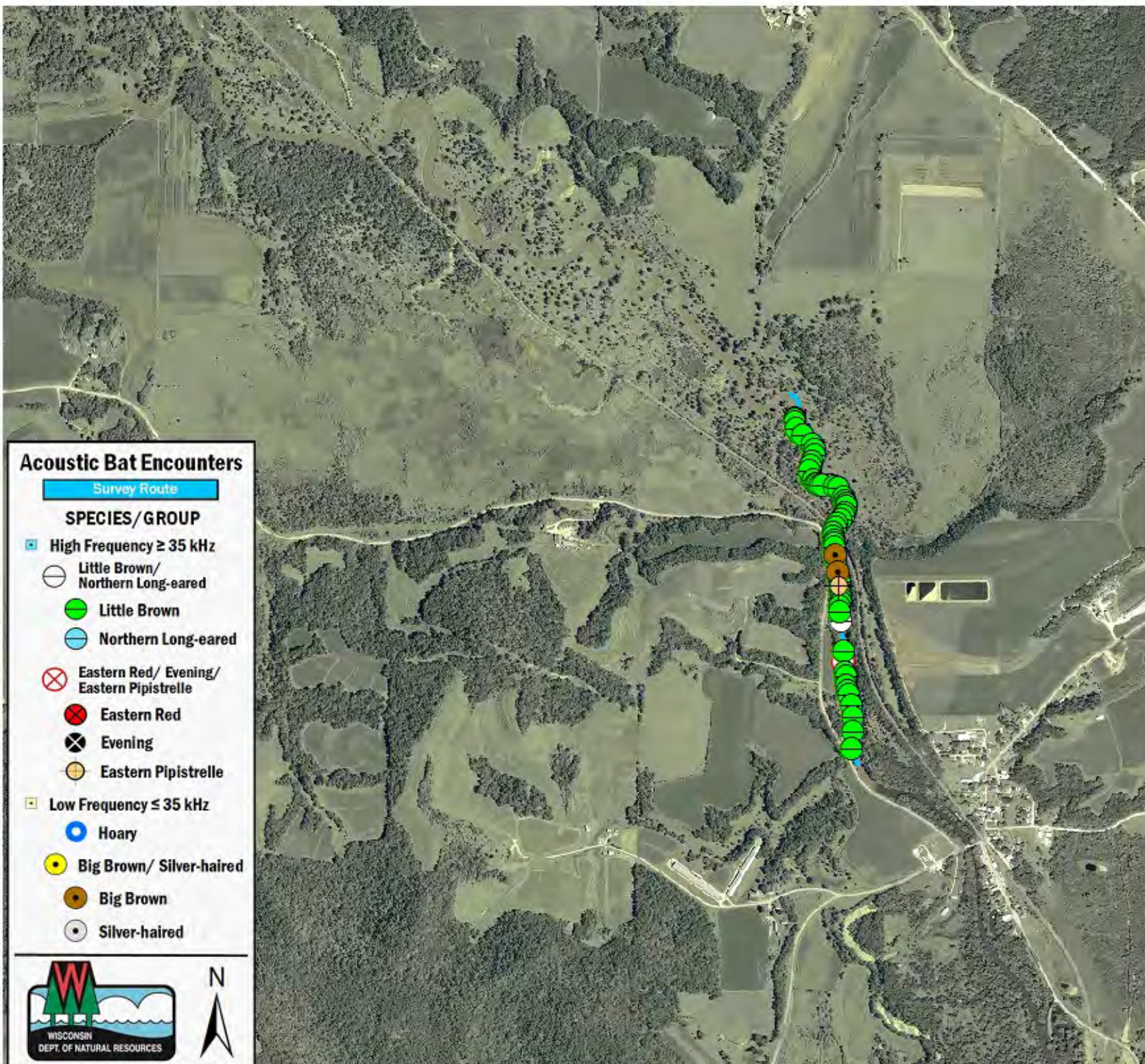
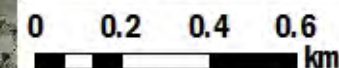
Wind (m/s)

3.2 2.1

Notes: BATLAS Rt. (Partial)

Survey completed N to S.

GPS/Detector connectivity issues.



Acoustic Bat Encounters

Survey Route

SPECIES/GROUP

High Frequency ≥ 35 kHz

Little Brown/
Northern Long-eared

Little Brown

Northern Long-eared

Eastern Red/ Evening/
Eastern Pipistrelle

Eastern Red

Evening

Eastern Pipistrelle

Low Frequency ≤ 35 kHz

Hoary

Big Brown/ Silver-haired

Big Brown

Silver-haired

