



SURVEY RESULTS

Columbia/Dodge County

Crawfish River 2

13 June 2010

RT 622

Surveyors: G Emerson & A Badje

Route Length: 7.96 km

4 Species Encountered

Time & Weather

Time (PM)

9:12 11:34

Temperature (F)

65.5 63.1

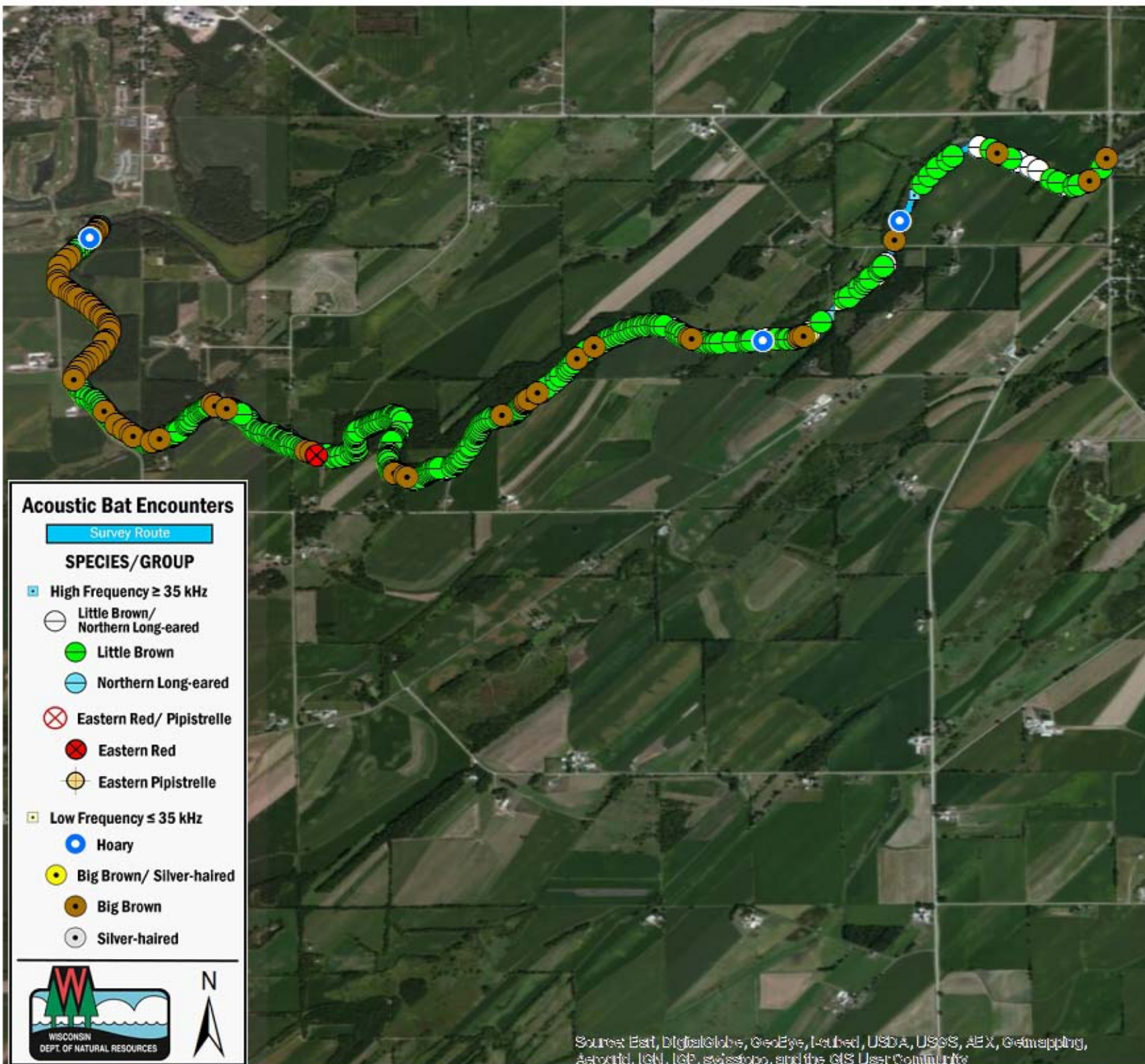
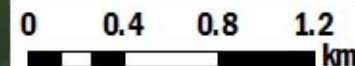
Relative Humidity (%)

90.0 92.0

Wind (m/s)

5.8 5.8

Notes: BATLAS Route
Survey completed West to East



Acoustic Bat Encounters

Survey Route

SPECIES/GROUP

- High Frequency ≥ 35 kHz
 - Little Brown/Northern Long-eared
 - Little Brown
 - Northern Long-eared
 - ⊗ Eastern Red/ Pipistrelle
 - Eastern Red
 - ⊙ Eastern Pipistrelle
- Low Frequency ≤ 35 kHz
 - Hoary
 - Big Brown/ Silver-haired
 - Big Brown
 - Silver-haired



Source: Esri, DigitalGlobe, GeoEye, Earthstar, USDA, USGS, AeroGRID, IGN, IGP, swisstopo, and the GIS User Community