



## SURVEY RESULTS

Fond du Lac County

Long Lake

14 June 2010

RT 631

Surveyors: M Keenan & B Sadler

Route Length: 7.68 km

3 Species Encountered

### Time & Weather

Time (PM)

9:08      11:13

Temperature (F)

59.0      57.9

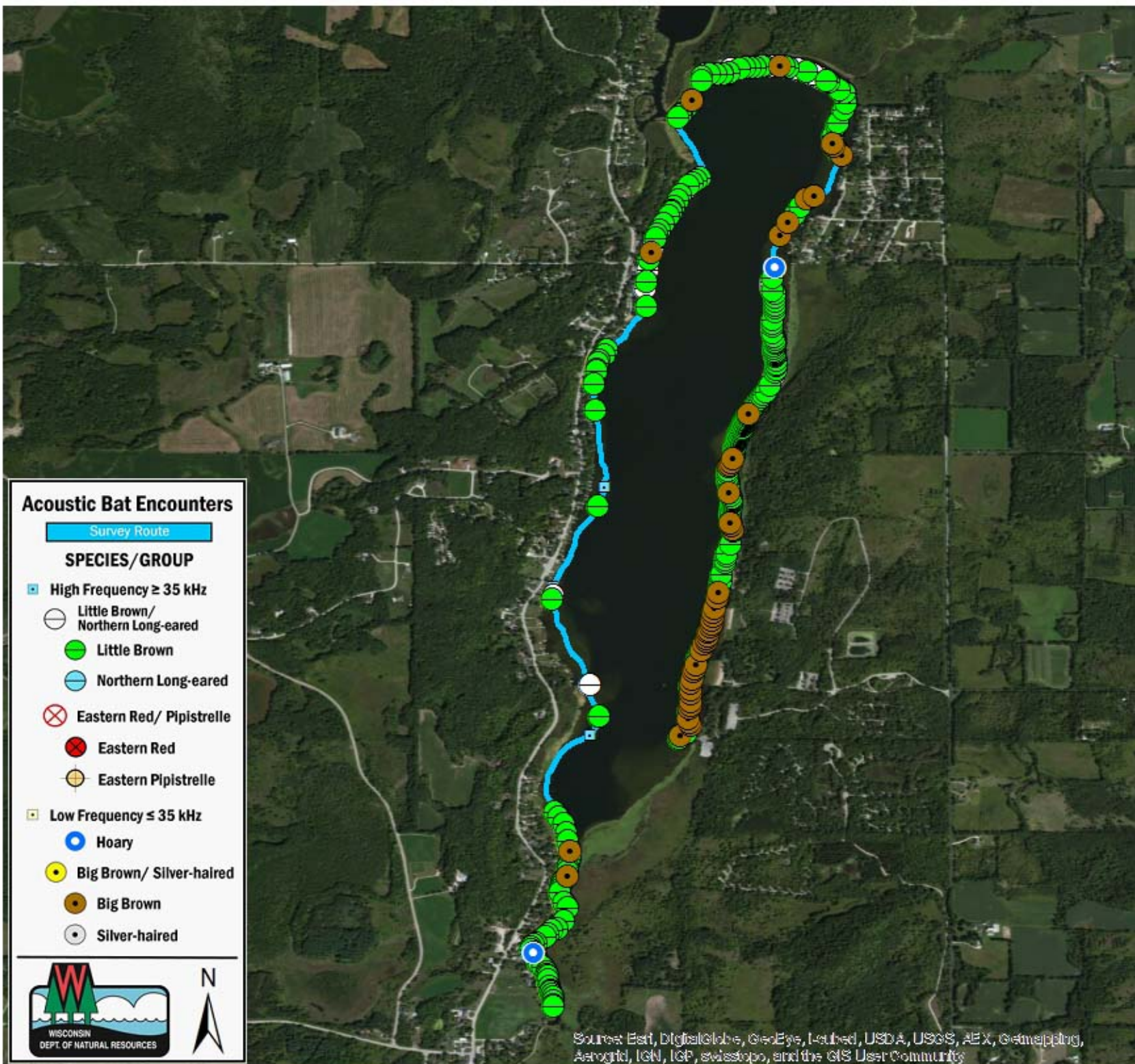
Relative Humidity (%)

88.0      91.0

Wind (m/s)

3.6      0.0

Notes: BATLAS Route  
Survey completed  
counter-clockwise



### Acoustic Bat Encounters

Survey Route

#### SPECIES/GROUP

- High Frequency  $\geq 35$  kHz
  - Little Brown/  
Northern Long-eared
  - Little Brown
  - Northern Long-eared
- ⊗ Eastern Red/ Pipistrelle
  - Eastern Red
  - Eastern Pipistrelle
- Low Frequency  $\leq 35$  kHz
  - Hoary
  - Big Brown/ Silver-haired
  - Big Brown
  - Silver-haired



Source: Esri, DigitalGlobe, GeoEye, Earthstar, USDA, USGS, AEX, Getmapping, Aerogrid, IGN, IGP, swisstopo, and the GIS User Community

