



SURVEY RESULTS

Green Lake/Marquette County

Grand River Marsh

15 June 2010

RT 634

Surveyors: T Brandt & H Kaarakka

Route Length: 9.13 km

3 Species Encountered

Time & Weather

Time (PM)

9:32 12:25AM

Temperature (F)

64.4 62.6

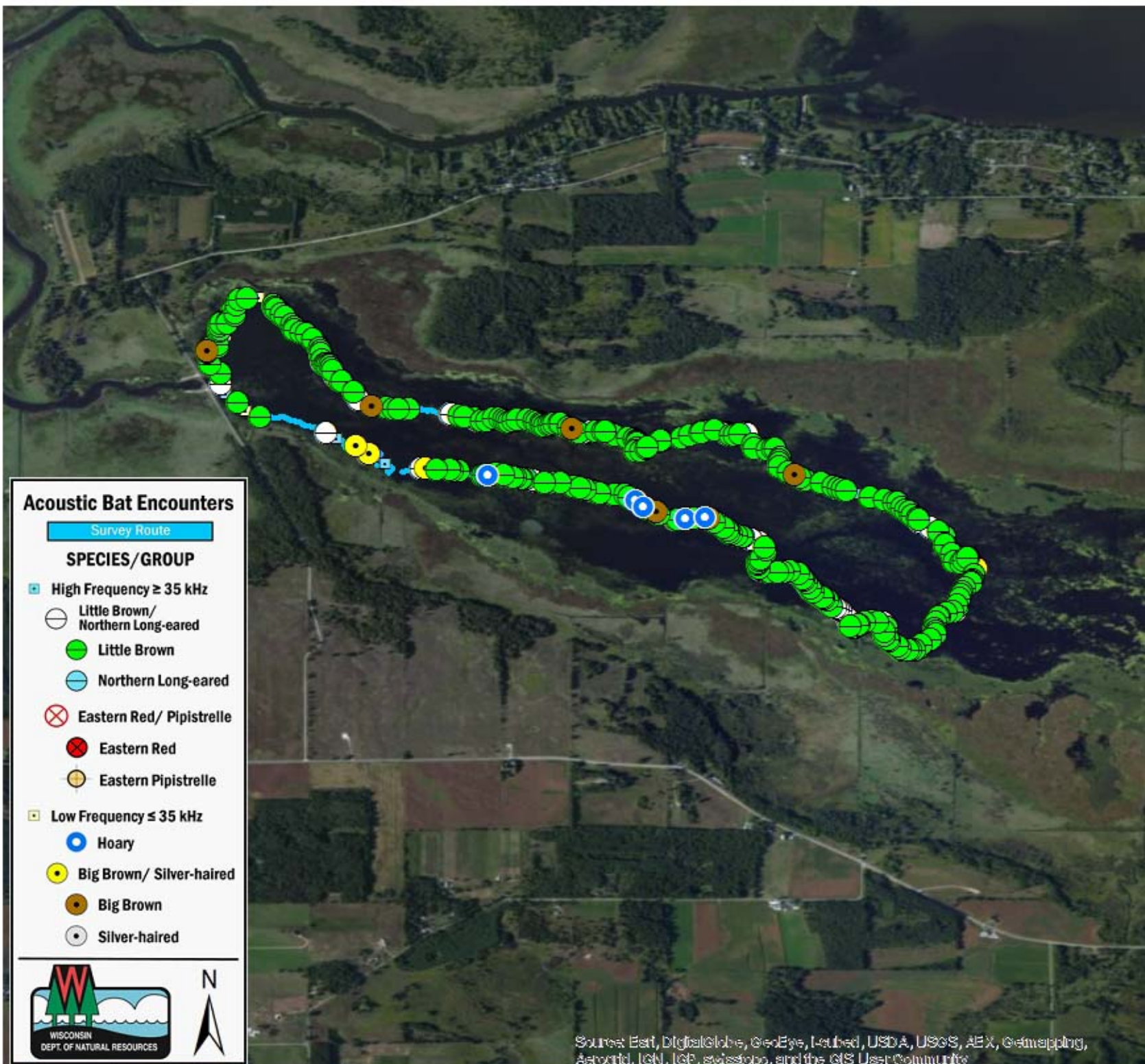
Relative Humidity (%)

100.0 100.0

Wind (m/s)

2.6 1.5

Notes: BATLAS Route
Survey completed clockwise



Acoustic Bat Encounters

Survey Route

SPECIES/GROUP

- High Frequency ≥ 35 kHz
 - Little Brown/Northern Long-eared
 - Little Brown
 - Northern Long-eared
 - ⊗ Eastern Red/ Pipistrelle
 - Eastern Red
 - Eastern Pipistrelle
- Low Frequency ≤ 35 kHz
 - Hoary
 - Big Brown/ Silver-haired
 - Big Brown
 - Silver-haired



Source: Esri, DigitalGlobe, GeoEye, Earthstar, USDA, USGS, AeroGRID, IGN, IGP, swisstopo, and the GIS User Community

