



SURVEY RESULTS

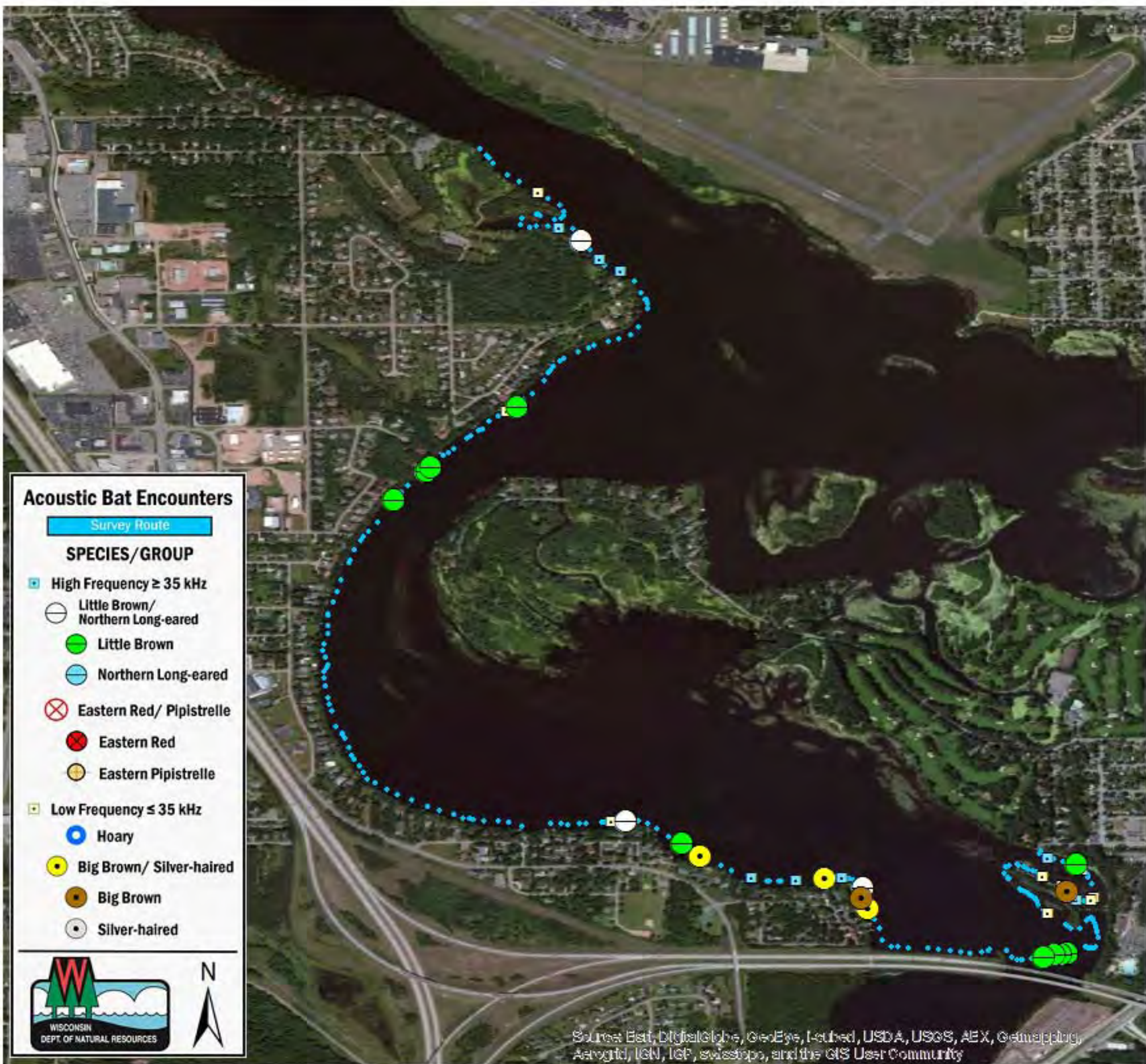
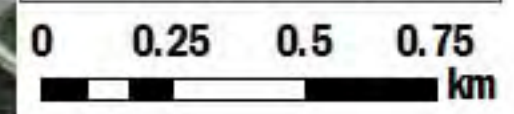
Marathon County
 Lake Wausau
 12 June 2010
 RT 637

Surveyors: K Ness & J Dahms
 Route Length: 6.76 km
 2 Species Encountered

Time & Weather

Time (PM)	
9:23	10:52
Temperature (F)	
61.3	60.7
Relative Humidity (%)	
93.0	95.0
Wind (m/s)	
0.0	0.0

Notes: BATLAS Rt. Surveyed Clockwise. No GPS uploaded, used header GPS to map survey route.



Acoustic Bat Encounters

- Survey Route**
- SPECIES/GROUP**
- High Frequency ≥ 35 kHz
 - Little Brown/Northern Long-eared
 - Little Brown
 - Northern Long-eared
 - ⊗ Eastern Red/ Pipistrelle
 - Eastern Red
 - Eastern Pipistrelle
 - Low Frequency ≤ 35 kHz
 - Hoary
 - Big Brown/ Silver-haired
 - Big Brown
 - Silver-haired



Source: Esri, DigitalGlobe, GeoEye, Earthstar, USDA, USGS, AEX, Geomapping, AerialGrid, IGN, IGP, swisstopo, and the GIS User Community