



SURVEY RESULTS

Ozaukee County
Milwaukee River 3
16 June 2010
RT 642

Surveyors: M Keenan & B Sadler
Route Length: 8.25 km
4 Species Encountered

Time & Weather

Time (PM)

9:11 11:54

Temperature (F)

65.5 60.1

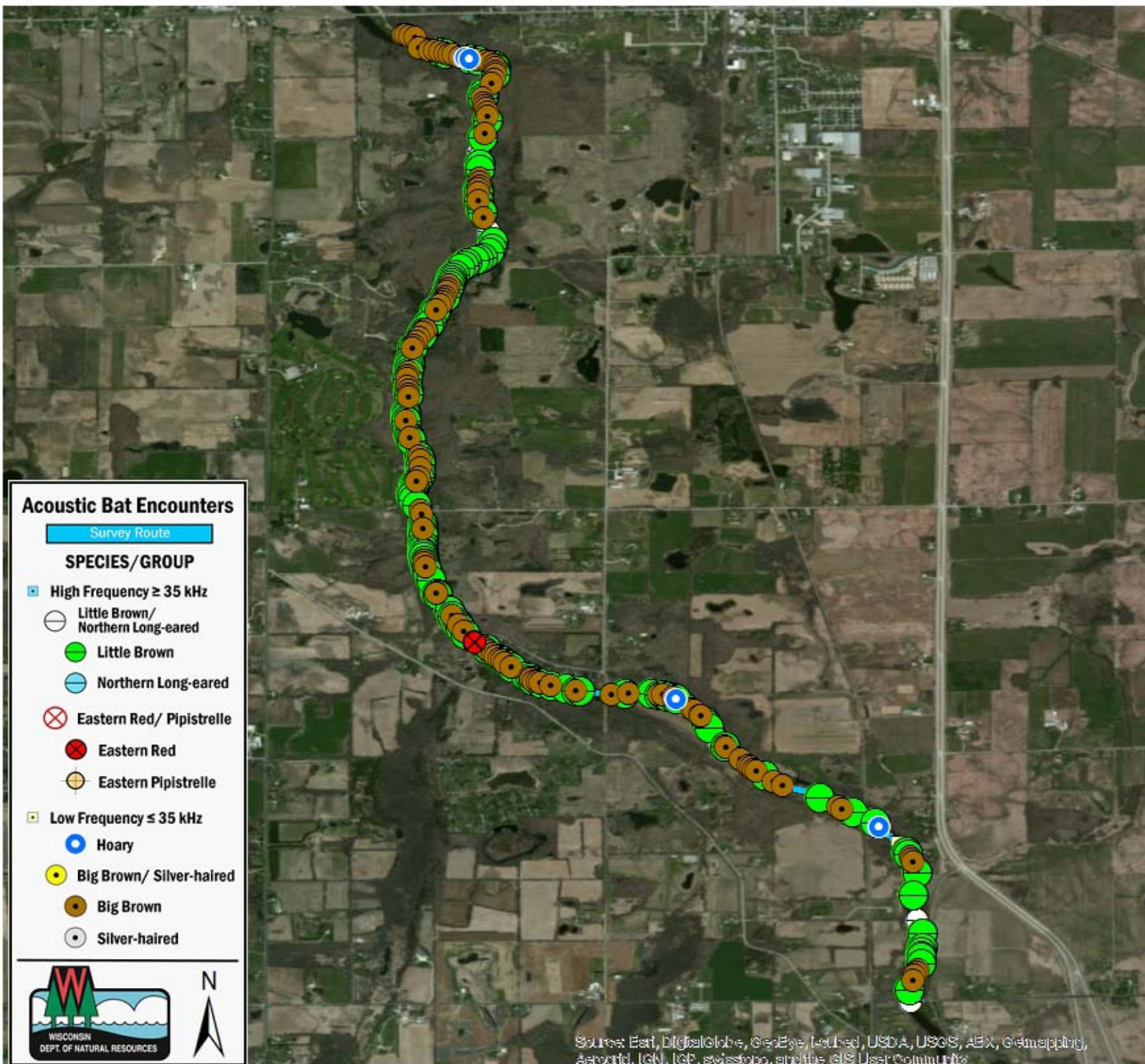
Relative Humidity (%)

89.0 94.0

Wind (m/s)

1.5 2.1

Notes: BATLAS Route
Survey completed North to South



Acoustic Bat Encounters

Survey Route

SPECIES/GROUP

High Frequency ≥ 35 kHz

Little Brown/
Northern Long-eared

Little Brown

Northern Long-eared

Eastern Red/ Pipistrelle

Eastern Red

Eastern Pipistrelle

Low Frequency ≤ 35 kHz

Hoary

Big Brown/ Silver-haired

Big Brown

Silver-haired



Source: Esri, DigitalGlobe, GeoEye, Earthstar, USDA, USGS, AeroGRID, IGN, IGP, swisstopo, and the GIS User Community

