



SURVEY RESULTS

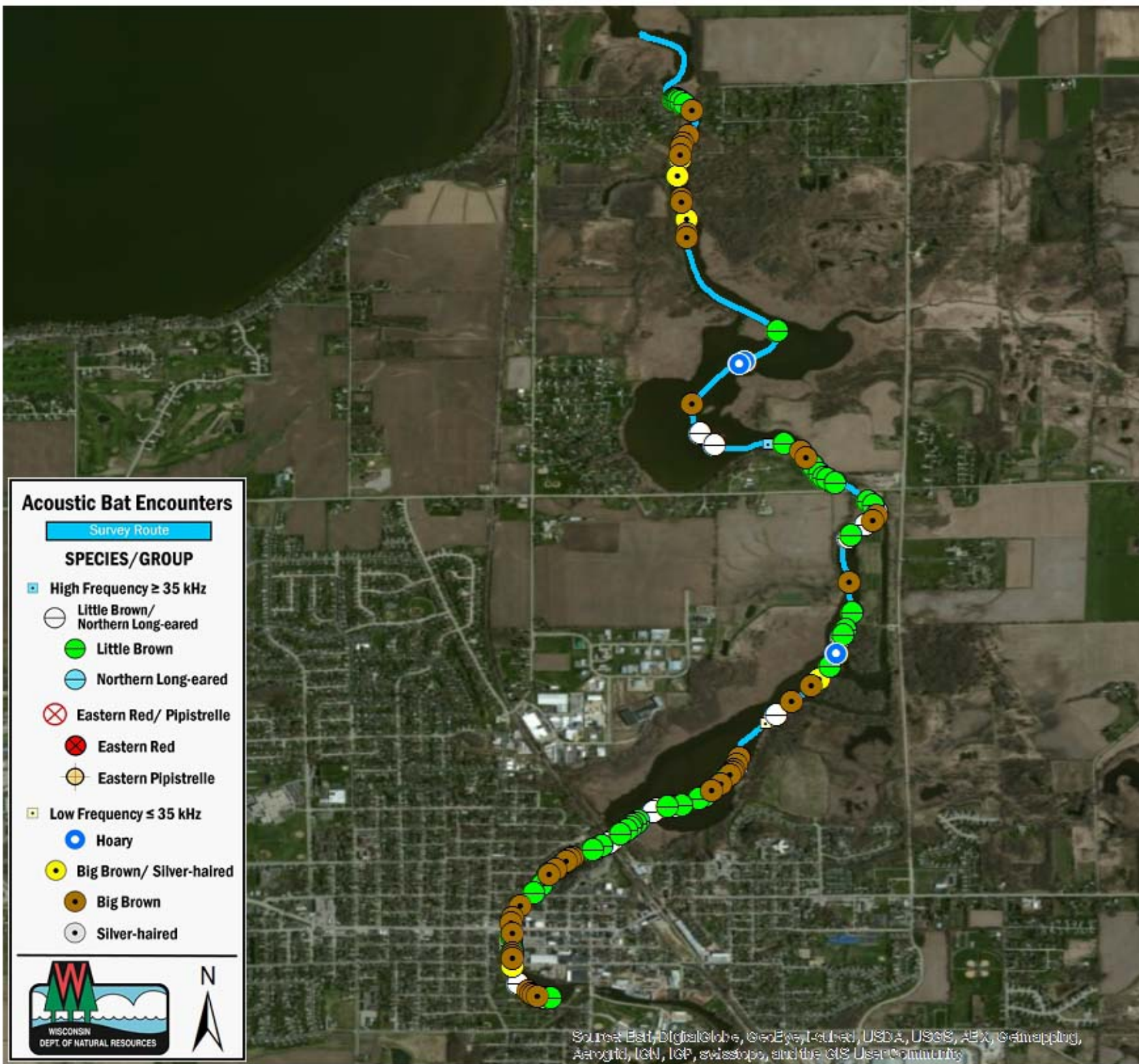
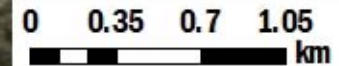
Dane County
 Yahara River 1
 16 June 2010
 RT 643

Surveyors: G Emerson & A Badje
 Route Length: 7.74 km
 3 Species Encountered

Time & Weather

Time (PM)	
9:11	10:56
Temperature (F)	
68.0	64.0
Relative Humidity (%)	
84.0	93.0
Wind (m/s)	
0.0	0.0

Notes: BATLAS Route
 Survey completed North to South



Acoustic Bat Encounters

- Survey Route**
- SPECIES/GROUP**
- High Frequency ≥ 35 kHz
 - Little Brown/Northern Long-eared
 - Little Brown
 - Northern Long-eared
 - ⊗ Eastern Red/ Pipistrelle
 - Eastern Red
 - Eastern Pipistrelle
 - Low Frequency ≤ 35 kHz
 - Hoary
 - Big Brown/ Silver-haired
 - Big Brown
 - Silver-haired



Source: Esri, DigitalGlobe, GeoEye, Earthstar, USDA, USGS, AeroGRID, IGN, IGP, swisstopo, and the GIS User Community