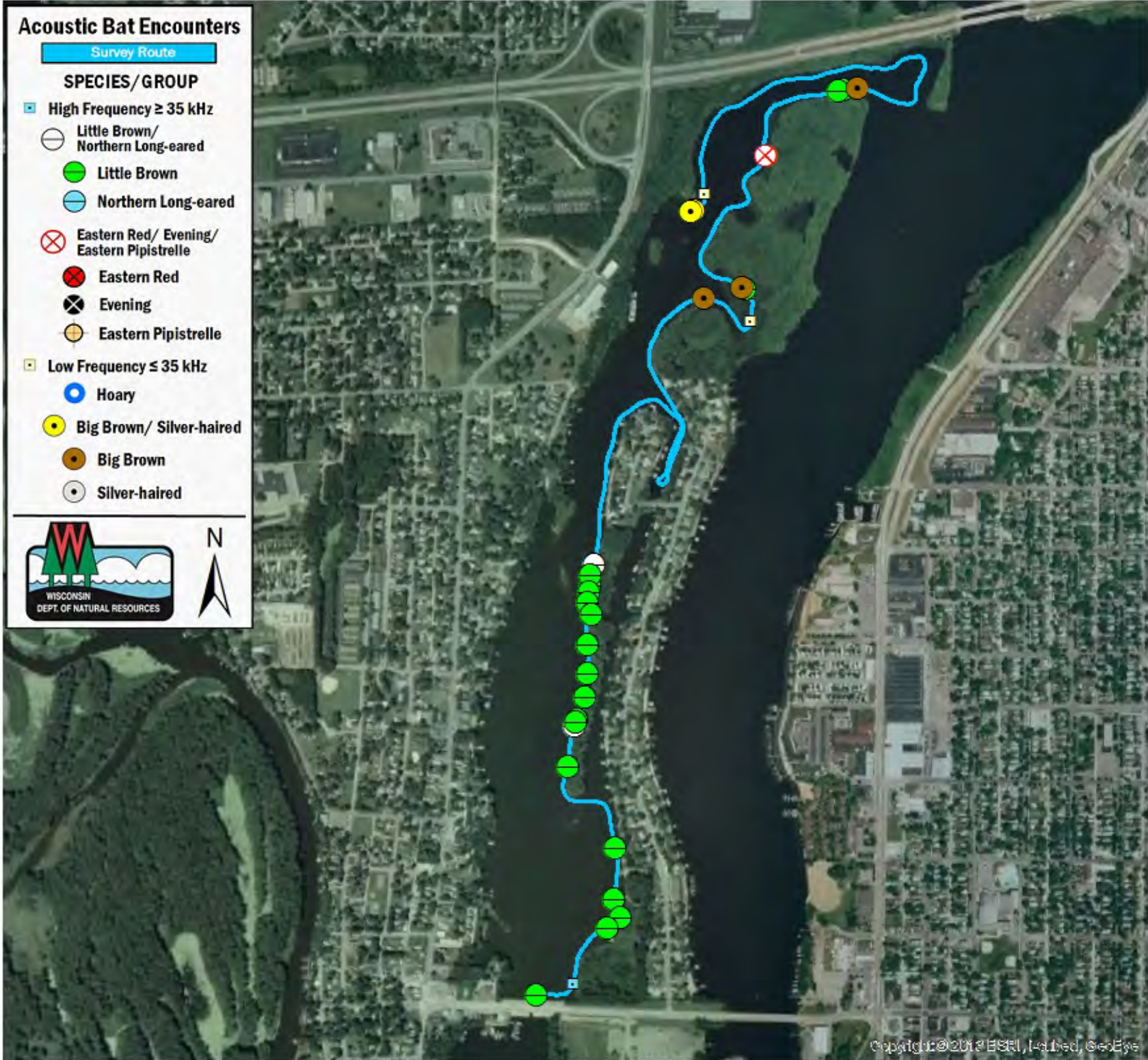


# Acoustic Bat Encounters

Survey Route

## SPECIES/ GROUP

- High Frequency  $\geq 35$  kHz
  - Little Brown/ Northern Long-eared
  - Little Brown
  - Northern Long-eared
  - ⊗ Eastern Red/ Evening/ Eastern Pipistrelle
  - ⊗ Eastern Red
  - ⊗ Evening
  - ⊗ Eastern Pipistrelle
- Low Frequency  $\leq 35$  kHz
  - Hoary
  - Big Brown/ Silver-haired
  - Big Brown
  - Silver-haired



## SURVEY RESULTS

La Crosse County  
 Richmond Bay  
 14 June 2010  
 RT 645

Surveyors: J Soine & D Troester  
 Route Length: 4.67 km  
 2 Species Encountered  
 37.36 Passes/Detector Hr

### Time & Weather

Time (PM)	
10:18	11:11
Temperature (F)	
64.8	64.0
Relative Humidity (%)	
88.0	86.0
Wind (m/s)	
0.0	0.0

Notes: BATLAS Rt. (Partial)  
 Survey completed N to S.

