

# Acoustic Bat Encounters

Survey Route

## SPECIES/GROUP

### High Frequency $\geq 35$ kHz

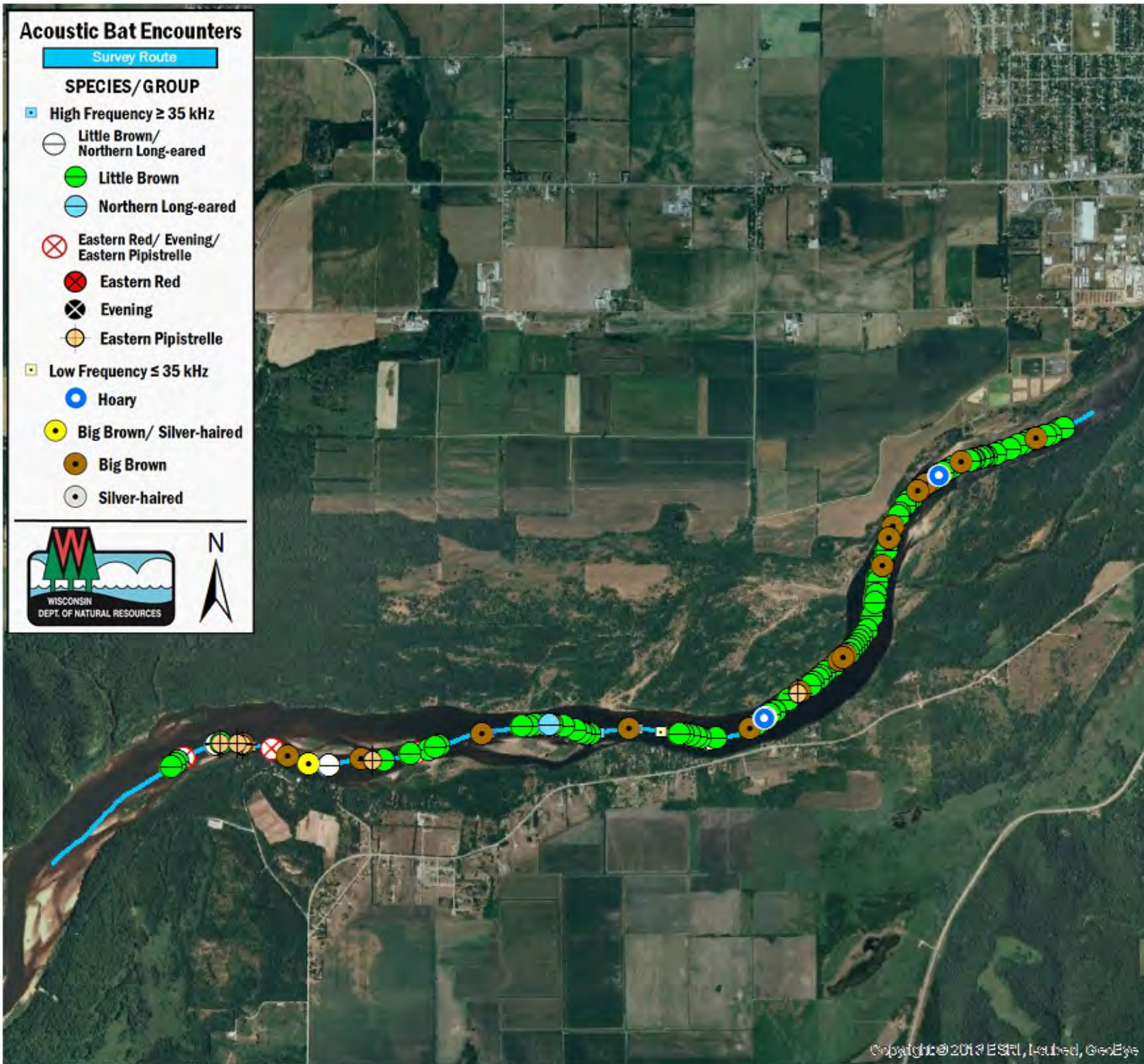
- Little Brown/  
Northern Long-eared
- Little Brown
- Northern Long-eared

### Eastern Red/ Evening/ Eastern Pipistrelle

- ⊗ Eastern Red
- ⊗ Evening
- ⊗ Eastern Pipistrelle

### Low Frequency $\leq 35$ kHz

- Hoary
- Big Brown/ Silver-haired
- Big Brown
- Silver-haired



## SURVEY RESULTS

Dane/Sauk County  
 Wisconsin River 1  
 19 June 2010  
 RT 666

Surveyors: J Fidler & J Gross  
 Route Length: 7.97 km  
 5 Species Encountered  
 164.05 Passes/Detector Hr

### Time & Weather

Time (PM)	
9:20	10:39
Temperature (F)	
67.0	63.0
Relative Humidity (%)	
87.0	87.0
Wind (m/s)	
0.0	0.0

Notes: BATLAS Rt.  
 Survey completed E to W.

