



SURVEY RESULTS

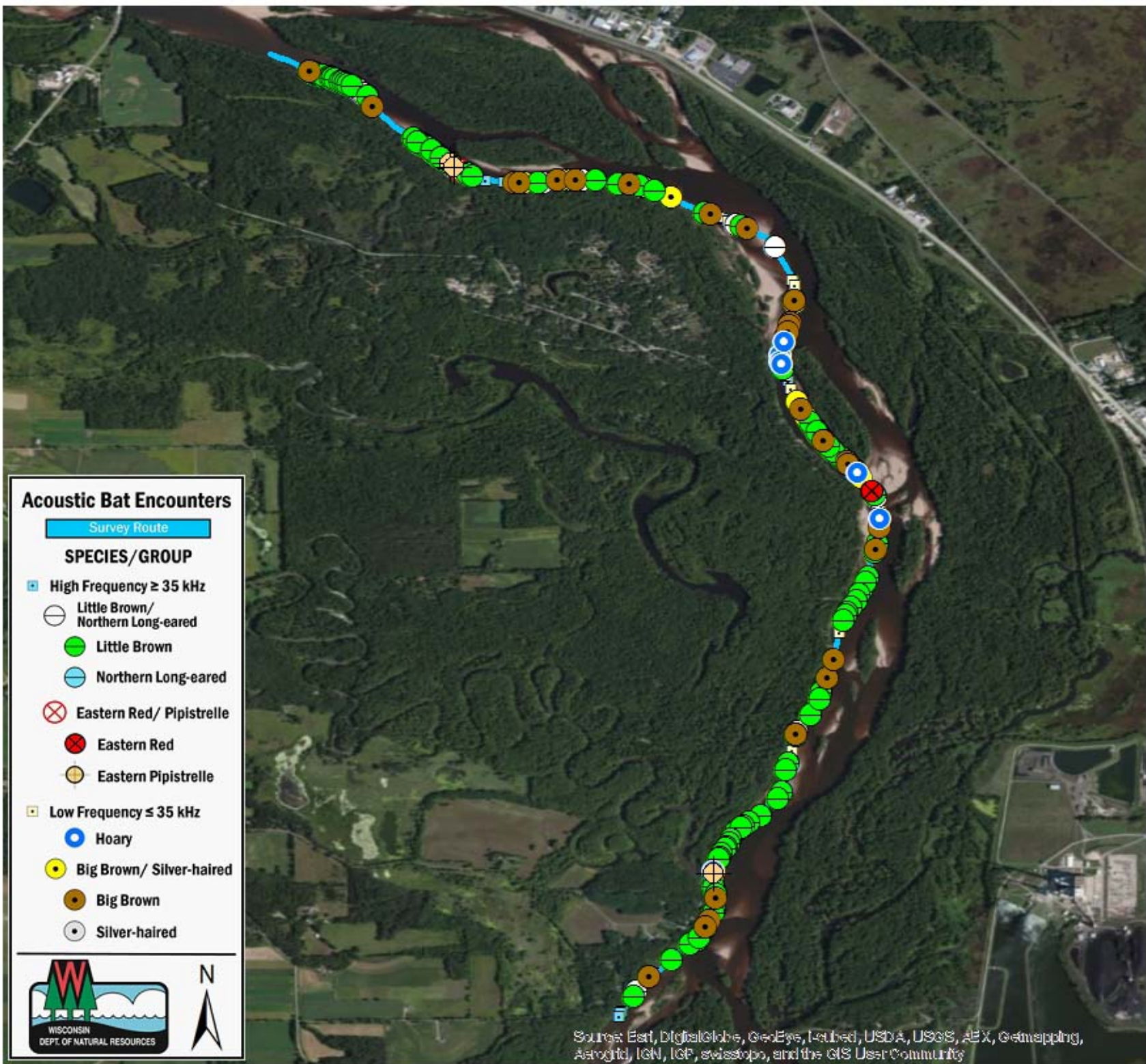
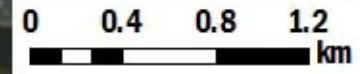
Columbia County
 Wisconsin River 16
 20 June 2010
 RT 672

Surveyors: G Emerson & A Badje
 Route Length: 8.08 km
 5 Species Encountered

Time & Weather

Time (PM)	
9:19	10:55
Temperature (F)	
68.2	65.3
Relative Humidity (%)	
82.0	88.0
Wind (m/s)	
0.0	3.5

Notes: BATLAS Route
 Survey completed North to South



Acoustic Bat Encounters

Survey Route

SPECIES/GROUP

- High Frequency ≥ 35 kHz
 - Little Brown/Northern Long-eared
 - Little Brown
 - Northern Long-eared
 - Eastern Red/ Pipistrelle
 - Eastern Red
 - Eastern Pipistrelle
- Low Frequency ≤ 35 kHz
 - Hoary
 - Big Brown/ Silver-haired
 - Big Brown
 - Silver-haired

Source: Esri, DigitalGlobe, GeoEye, Earthstar, USDA, USGS, AeroX, GeoMapping, Astrogrid, IGN, IGP, swisstopo, and the GIS User Community