



SURVEY RESULTS

Lafayette County
 Cheese Country Trail 1
 21 June 2010
 RT 676

Surveyors: P White
 Route Length: 3.83 km
 2 Species Encountered

Time & Weather

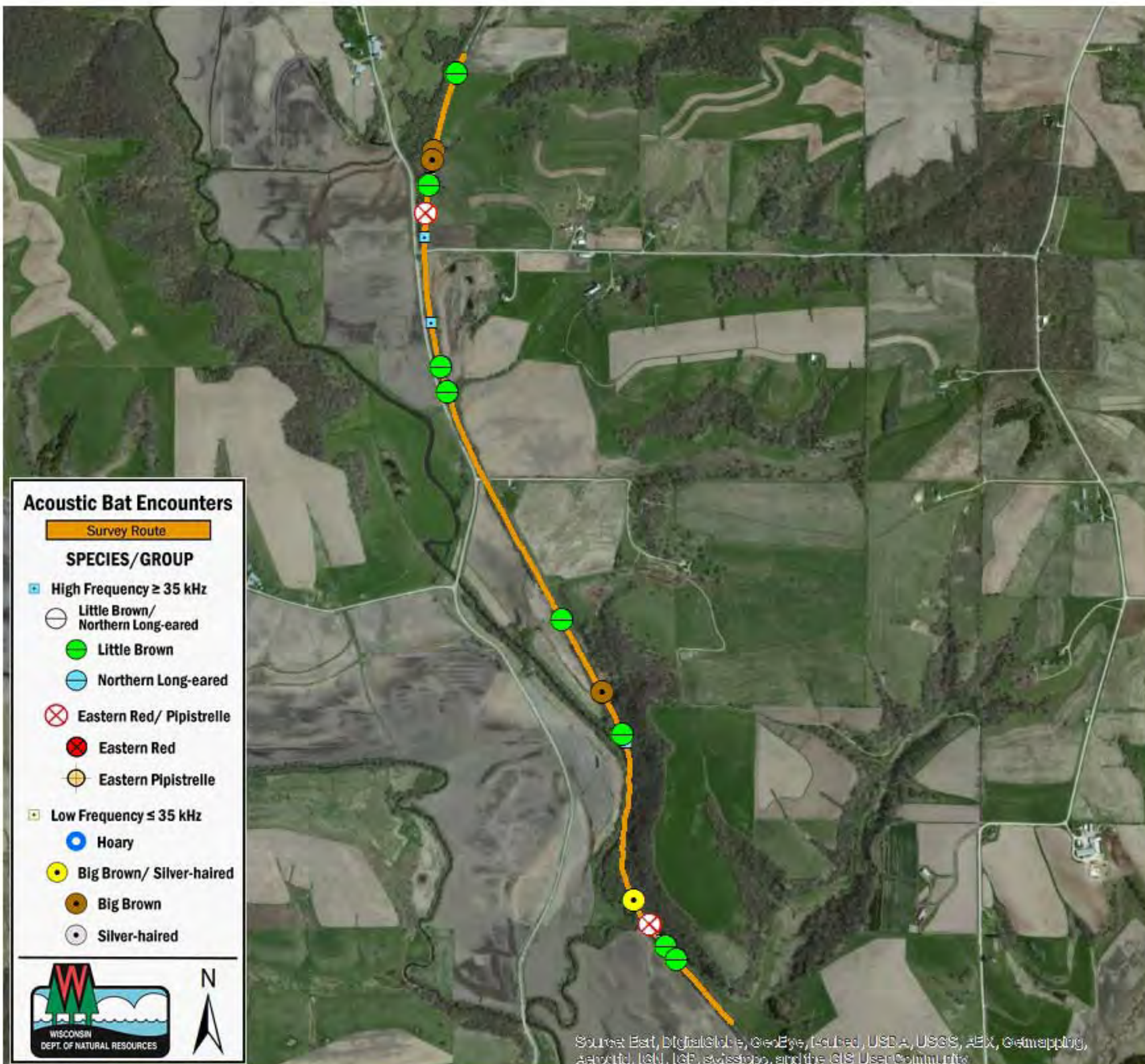
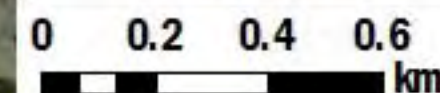
Time (PM)
 9:41 10:12

Temperature (F)
 74.1 72.0

Relative Humidity (%)
 83.0 87.0

Wind (m/s)
 3.08 2.59

Notes: BATLAS Rt
 Surveyed North to South



Acoustic Bat Encounters

Survey Route

SPECIES/GROUP

- High Frequency ≥ 35 kHz
 - Little Brown/Northern Long-eared (circle with horizontal line)
 - Little Brown (green circle)
 - Northern Long-eared (blue circle)
 - Eastern Red/ Pipistrelle (circle with X)
 - Eastern Red (red circle)
 - Eastern Pipistrelle (yellow circle)
- Low Frequency ≤ 35 kHz
 - Hoary (blue circle)
 - Big Brown/ Silver-haired (yellow circle)
 - Big Brown (brown circle)
 - Silver-haired (grey circle)



Source: Esri, DigitalGlobe, GeoEye, i-cubed, USDA, USGS, Aero, GeoMapping, AeroGRID, IGN, IGF, swisstopo, and the GIS User Community