



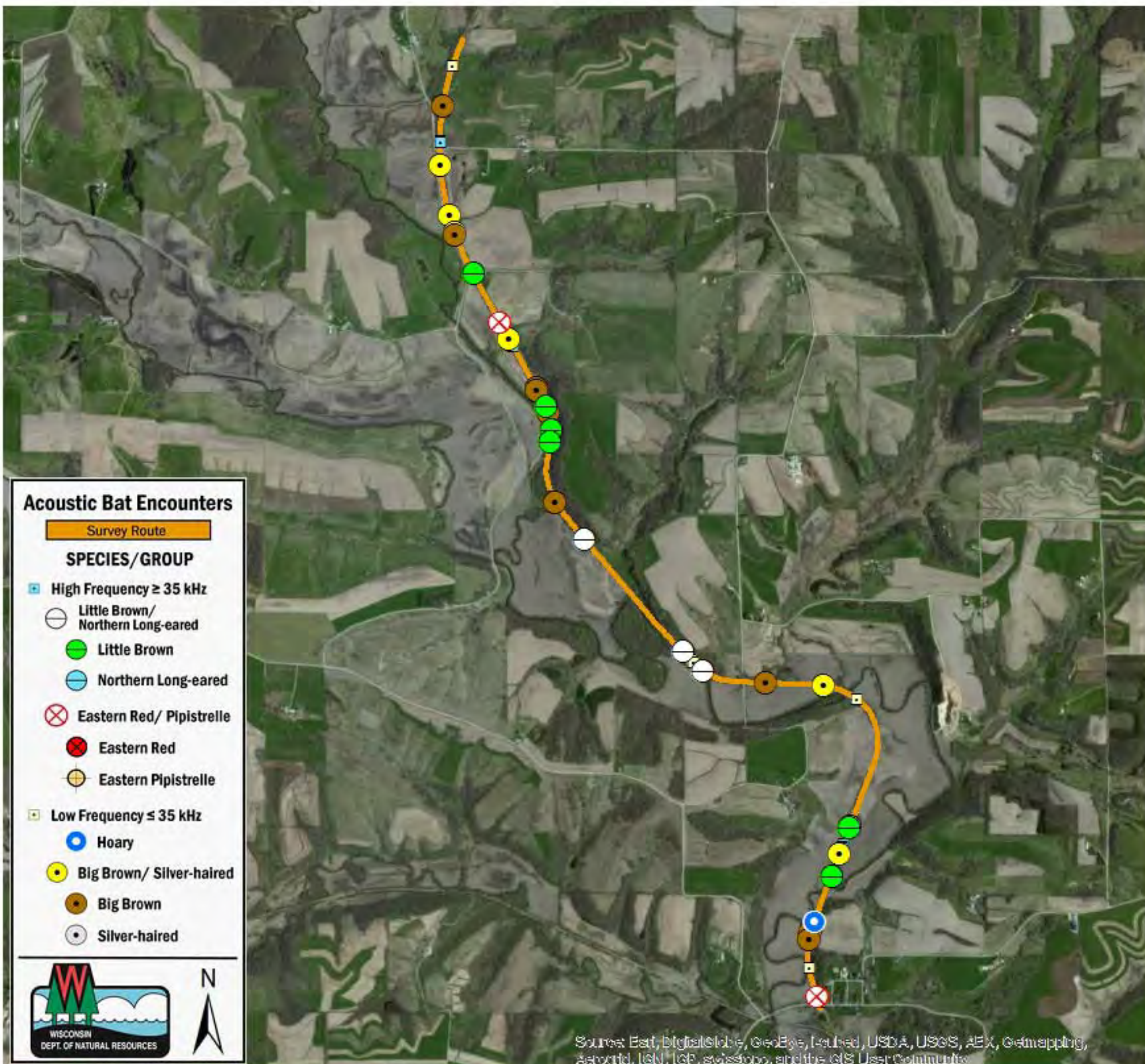
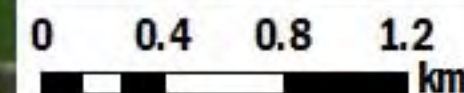
## SURVEY RESULTS

Lafayette County  
 Cheese Country Trail 1  
 22 June 2010  
 RT 686  
 Surveyors: K Ness  
 Route Length: 8.21 km  
 3 Species Encountered

### Time & Weather

Time (PM)	
9:46	11:28
Temperature (F)	
74.7	75.6
Relative Humidity (%)	
34.0	35.0
Wind (m/s)	
0.45	1.03

Notes: BATLAS Rt  
 Surveyed North to South



### Acoustic Bat Encounters

- Survey Route**
- SPECIES/GROUP**
- High Frequency  $\geq 35$  kHz
  - Little Brown/  
Northern Long-eared
  - Little Brown
  - Northern Long-eared
  - ⊗ Eastern Red/ Pipistrelle
  - ⊗ Eastern Red
  - ⊗ Eastern Pipistrelle
  - Low Frequency  $\leq 35$  kHz
  - Hoary
  - Big Brown/ Silver-haired
  - Big Brown
  - Silver-haired



Source: Esri, DigitalGlobe, GeoEye, Earthstar, USDA, USGS, AeroGRID, IGN, IGP, swisstopo, and the GIS User Community