




# Acoustic Bat Encounters

Survey Route

## SPECIES/GROUP

### High Frequency $\geq 35$ kHz

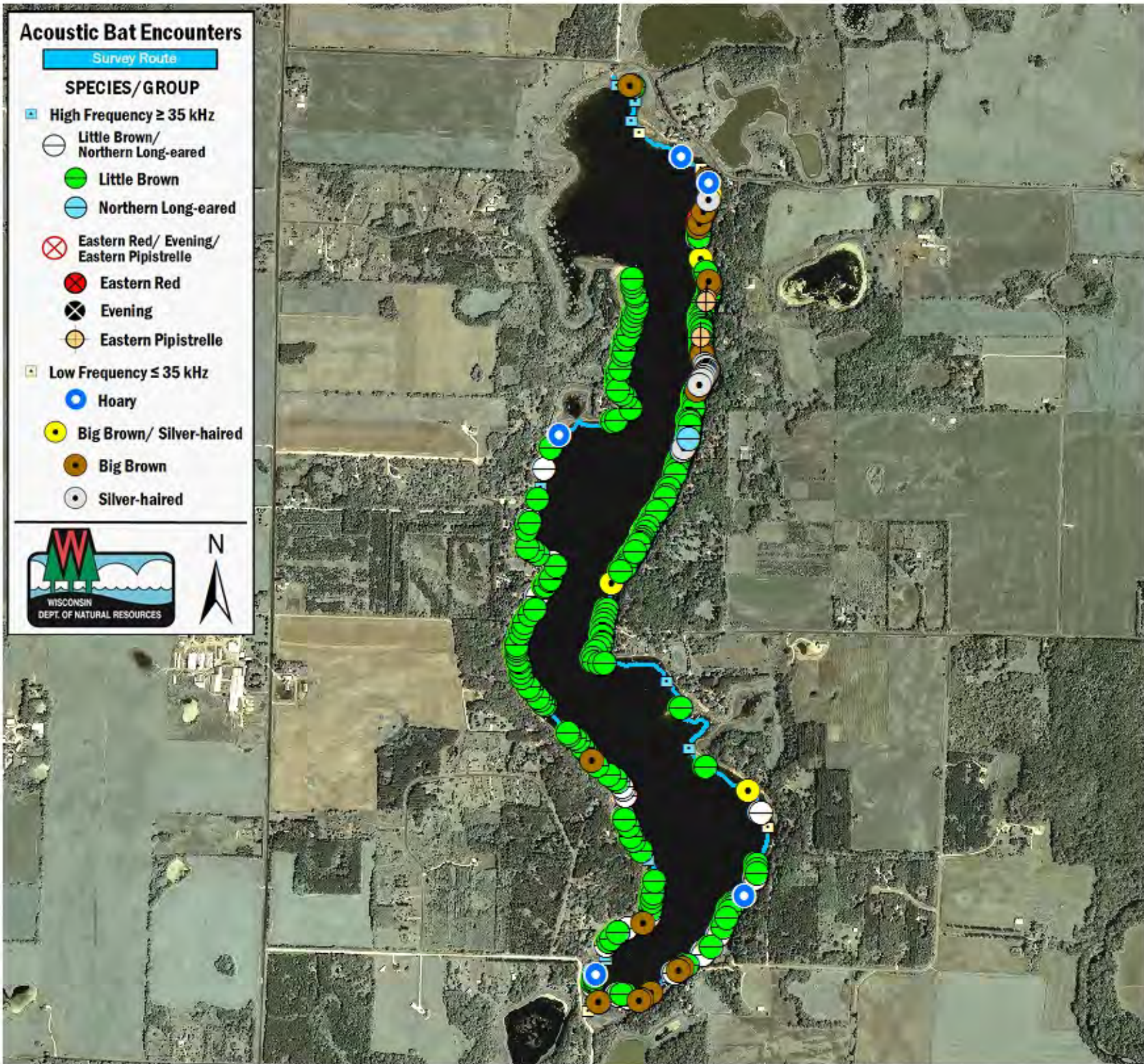
-  Little Brown/  
Northern Long-eared
-  Little Brown
-  Northern Long-eared

### Eastern Red/ Evening/ Eastern Pipistrelle

-  Eastern Red
-  Evening
-  Eastern Pipistrelle

### Low Frequency $\leq 35$ kHz

-  Hoary
-  Big Brown/ Silver-haired
-  Big Brown
-  Silver-haired



## SURVEY RESULTS

St. Croix County

Bass Lake

21 June 2010

RT 691

Surveyors: J Klemish & S McIntyre

Route Length: 8.07 km

6 Species Encountered

207.61 Passes/Detector Hr

### Time & Weather

Time (PM)

9:47      12:30 AM

Temperature (F)

67.5      65.1

Relative Humidity (%)

90.0      92.0

Wind (m/s)

0.0      1.5

Notes: BATLAS Rt.

Survey completed clockwise.

