



SURVEY RESULTS

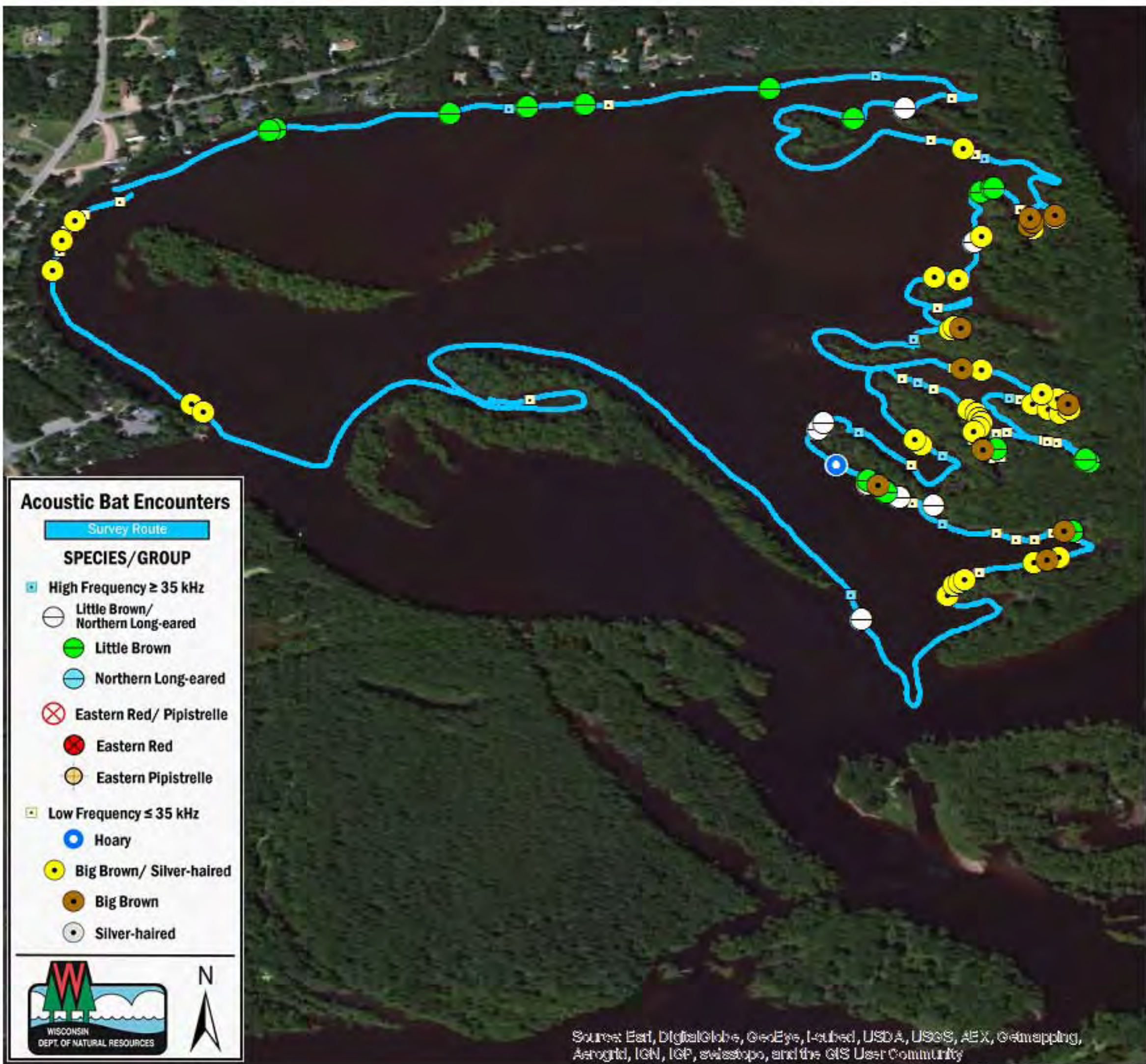
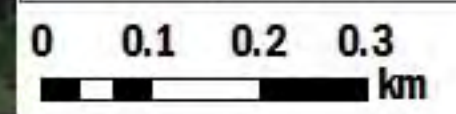
Marathon County
 Half Moon Lake
 22 June 2010
 RT 692

Surveyors: J Klemish & S McIntyre
 Route Length: 8.62 km
 3 Species Encountered

Time & Weather

Time (PM)	
9:42	12:36 AM
Temperature (F)	
73.4	68.7
Relative Humidity (%)	
83.0	98.0
Wind (m/s)	
3.1	2.6

Notes: BATLAS Rt.
 Surveyed Counter-clockwise.



Acoustic Bat Encounters

- Survey Route
- SPECIES/GROUP**
- High Frequency ≥ 35 kHz
- Little Brown/
Northern Long-eared
- Little Brown
- Northern Long-eared
- Eastern Red/ Pipistrelle
- Eastern Red
- Eastern Pipistrelle
- Low Frequency ≤ 35 kHz
- Hoary
- Big Brown/ Silver-haired
- Big Brown
- Silver-haired



Source: Esri, DigitalGlobe, GeoEye, Earthstar, USDA, USGS, AEX, Geomapping, Aerogrid, IGN, IGP, swisstopo, and the GIS User Community