

## Acoustic Bat Encounters

Survey Route

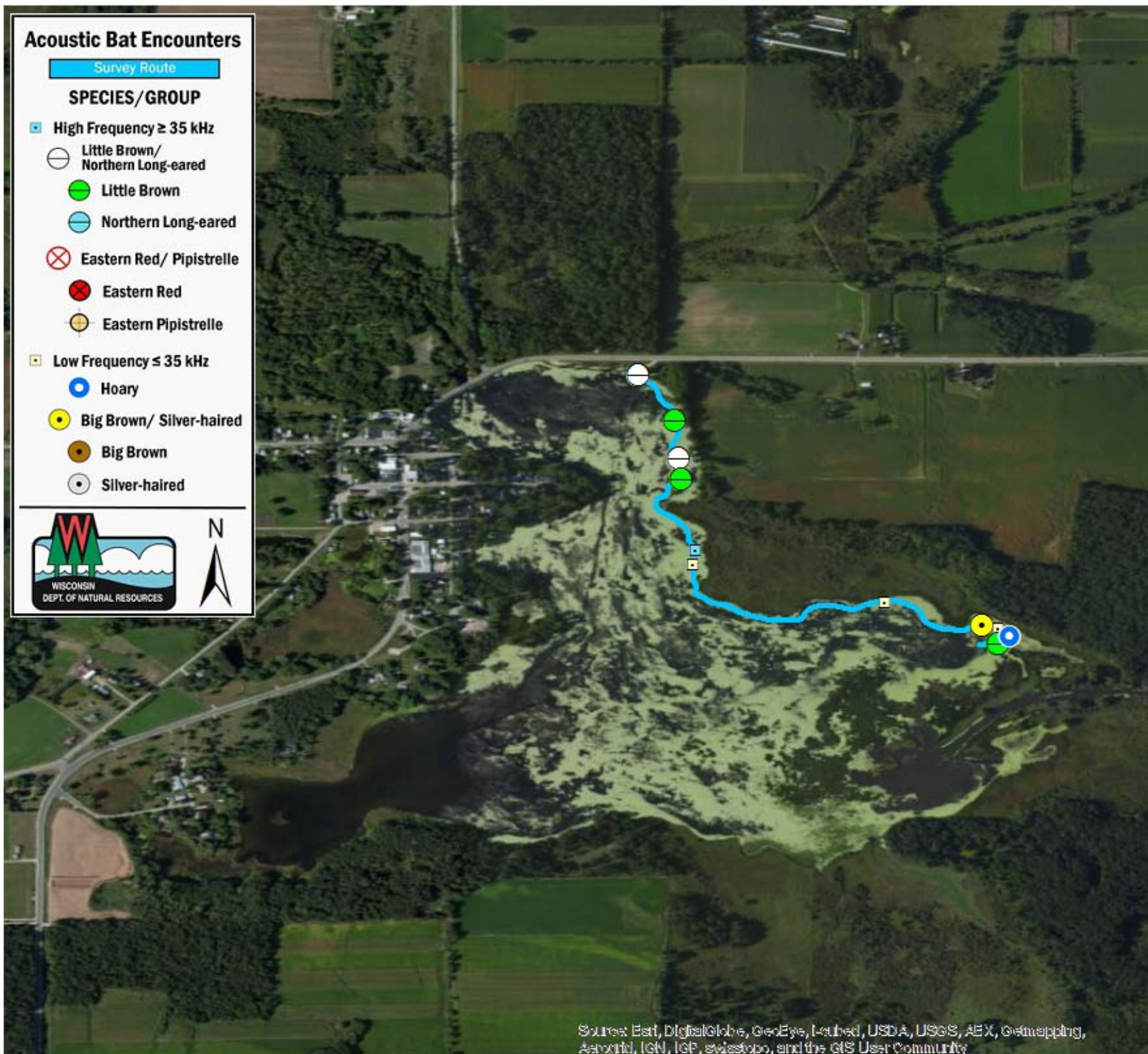
### SPECIES/GROUP

#### High Frequency $\geq 35$ kHz

-  Little Brown/  
Northern Long-eared
-  Little Brown
-  Northern Long-eared
-  Eastern Red/ Pipistrelle
-  Eastern Red
-  Eastern Pipistrelle

#### Low Frequency $\leq 35$ kHz

-  Hoary
-  Big Brown/ Silver-haired
-  Big Brown
-  Silver-haired



## SURVEY RESULTS

Green Lake County  
Grand Lake Millpond

20 June 2010

RT 700

Surveyors: E Giblin & M Ponik

Route Length: 1.49 km

2 Species Encountered

### Time & Weather

Time (PM)

9:22      9:50

Temperature (F)

65.8      65.8

Relative Humidity (%)

100.0      100.0

Wind (m/s)

0.0      0.0

Notes: BATLAS Route. Survey completed counter-clockwise. Partial route - GPS malfunction.

