



SURVEY RESULTS

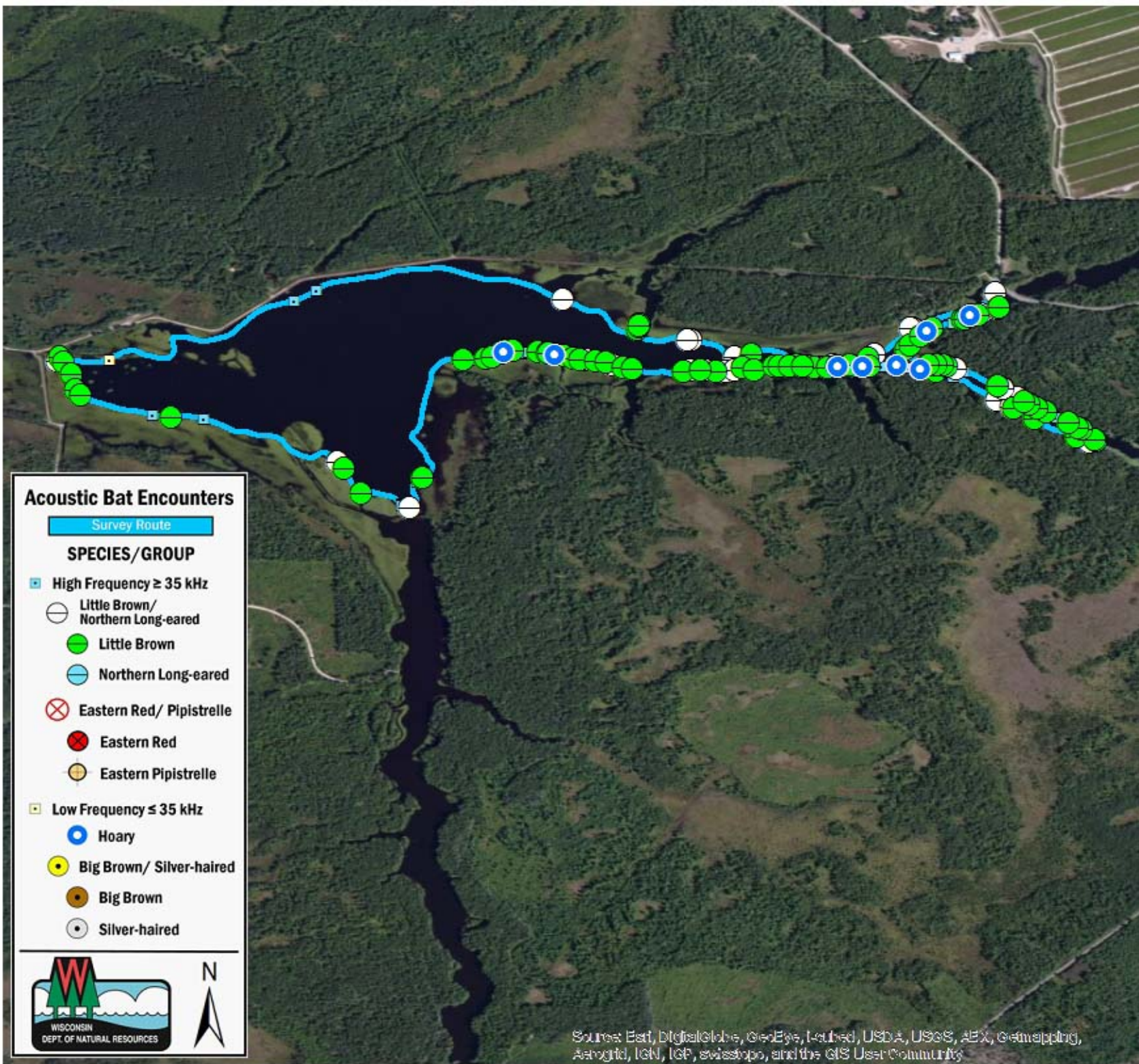
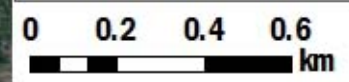
Jackson County
 Potter Flowage
 26 June 2010
 RT 712

Surveyors: J Saine & D Troester
 Route Length: 7.01 km
 2 Species Encountered

Time & Weather

Time (PM)	
12:01 AM	1:31 AM
Temperature (F)	
68.0	67.5
Relative Humidity (%)	
95.0	98.0
Wind (m/s)	
3.1	0.0

Notes: BATLAS Route. Survey completed counter-clockwise
 Late start due to T-Storms



Acoustic Bat Encounters

Survey Route

SPECIES/GROUP

High Frequency ≥ 35 kHz

- Little Brown/Northern Long-eared
- Little Brown
- Northern Long-eared
- Eastern Red/Pipistrelle
- Eastern Red
- Eastern Pipistrelle

Low Frequency ≤ 35 kHz

- Hoary
- Big Brown/Silver-haired
- Big Brown
- Silver-haired



Source: Esri, DigitalGlobe, GeoEye, Earthstar, USDA, USGS, AeroGRID, IGN, IGP, swisstopo, and the GIS User Community