



## SURVEY RESULTS

Columbia County  
French Creek WLA

Pond #2

27 June 2010

RT 716

Surveyors: A Badje & G Emerson

Route Length: 6.17 km

3 Species Encountered

### Time & Weather

Time (PM)

9:15      10:55

Temperature (F)

73.2      69.3

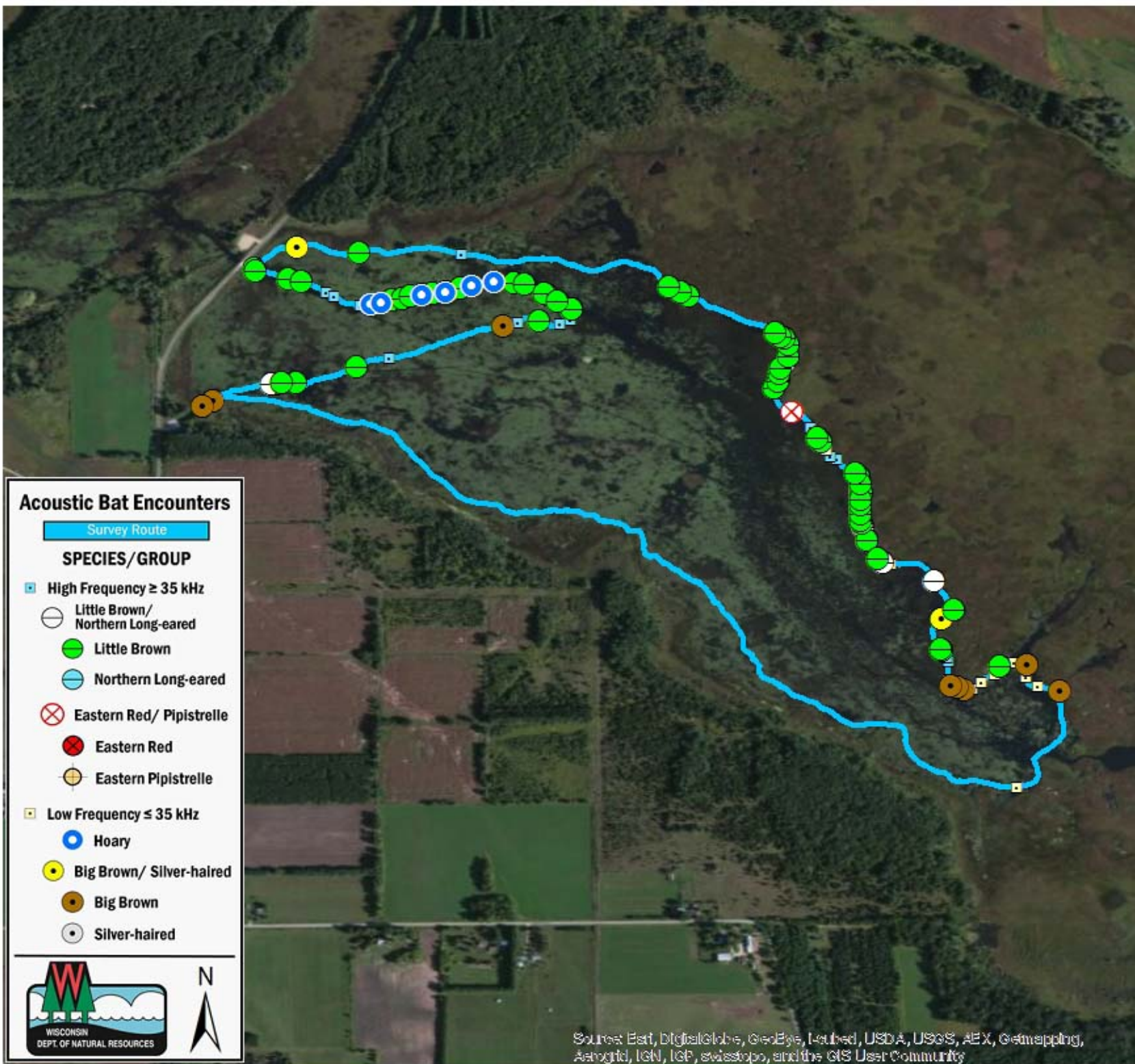
Relative Humidity (%)

81.0      87.0

Wind (m/s)

1.6      2.1

Notes: BATLAS Route  
Survey completed  
counter-clockwise



### Acoustic Bat Encounters

Survey Route

#### SPECIES/GROUP

- ▣ High Frequency  $\geq 35$  kHz
  - Little Brown/  
Northern Long-eared
  - Little Brown
  - Northern Long-eared
  - ⊗ Eastern Red/ Pipistrelle
  - Eastern Red
  - Eastern Pipistrelle
- ▣ Low Frequency  $\leq 35$  kHz
  - Hoary
  - Big Brown/ Silver-haired
  - Big Brown
  - Silver-haired



Source: Esri, DigitalGlobe, GeoEye, Earthstar, USDA, USGS, AeroGRID, IGN, IGP, swisstopo, and the GIS User Community

