



SURVEY RESULTS

Milwaukee/Ozaukee County

Milwaukee River 6

27 June 2010

RT 720

Surveyors: J Klemish & S McIntyre

Route Length: 8.12 km

5 Species Encountered

155.25 Passes/Detector Hr

Time & Weather

Time (PM)

9:54 11:14

Temperature (F)

78.1 77.0

Relative Humidity (%)

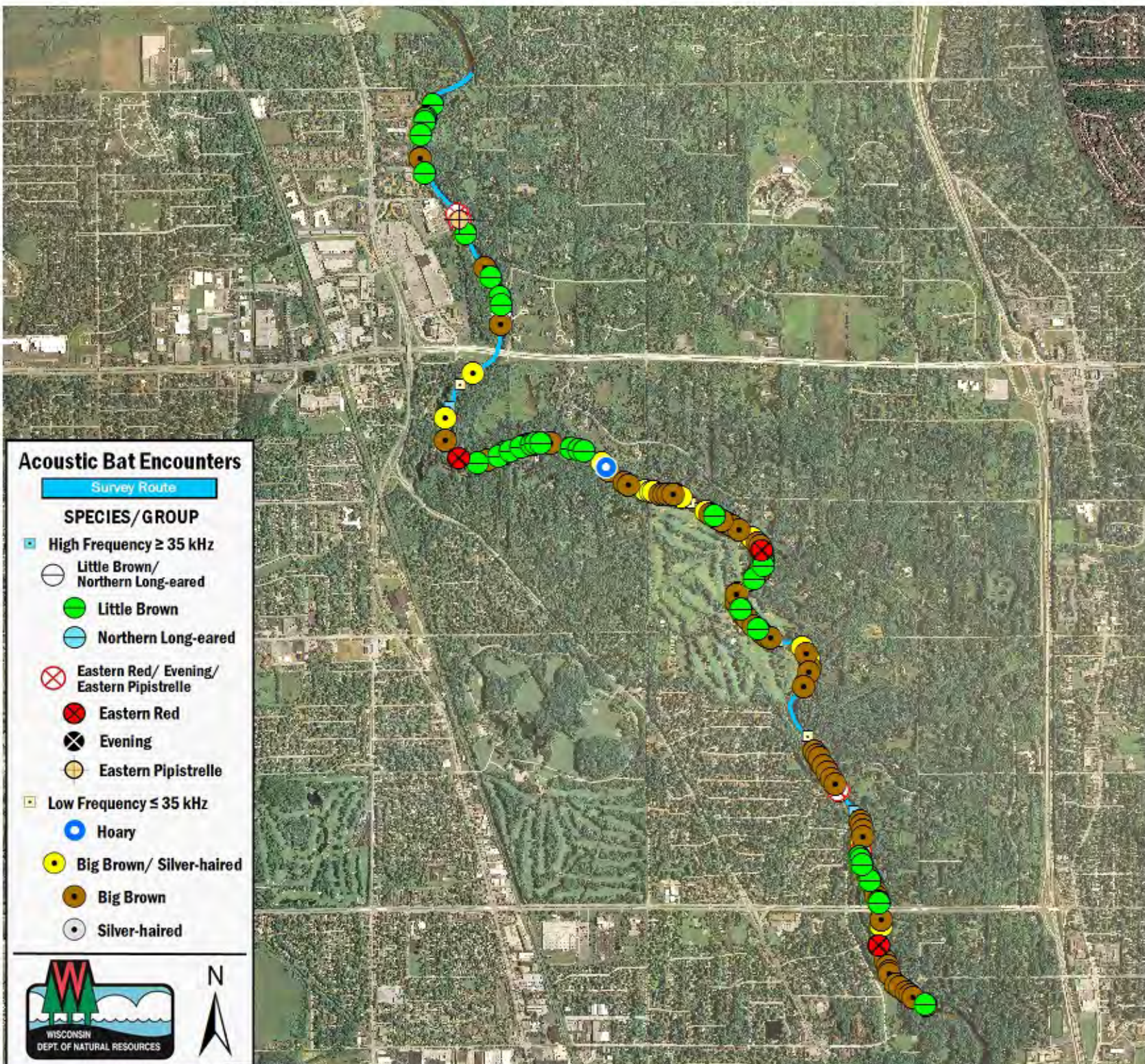
68.0 74.0

Wind (m/s)

3.6 3.1

Notes: BATLAS Rt.

Surveyed completed N to S.



Acoustic Bat Encounters

Survey Route

SPECIES/GROUP

- ▣ High Frequency ≥ 35 kHz
 - Little Brown/Northern Long-eared
 - Little Brown
 - Northern Long-eared
 - ⊗ Eastern Red/ Evening/ Eastern Pipistrelle
 - ⊗ Eastern Red
 - ⊗ Evening
 - Eastern Pipistrelle
- ▣ Low Frequency ≤ 35 kHz
 - Hoary
 - Big Brown/ Silver-haired
 - Big Brown
 - Silver-haired

