



SURVEY RESULTS

Green/Rock County

Sugar River 3

28 June 2010

RT 724

Surveyors: G Emerson & A Badje

Route Length: 8.33 km

6 Species Encountered

Time & Weather

Time (PM)

9:17 10:57

Temperature (F)

68.0 67.1

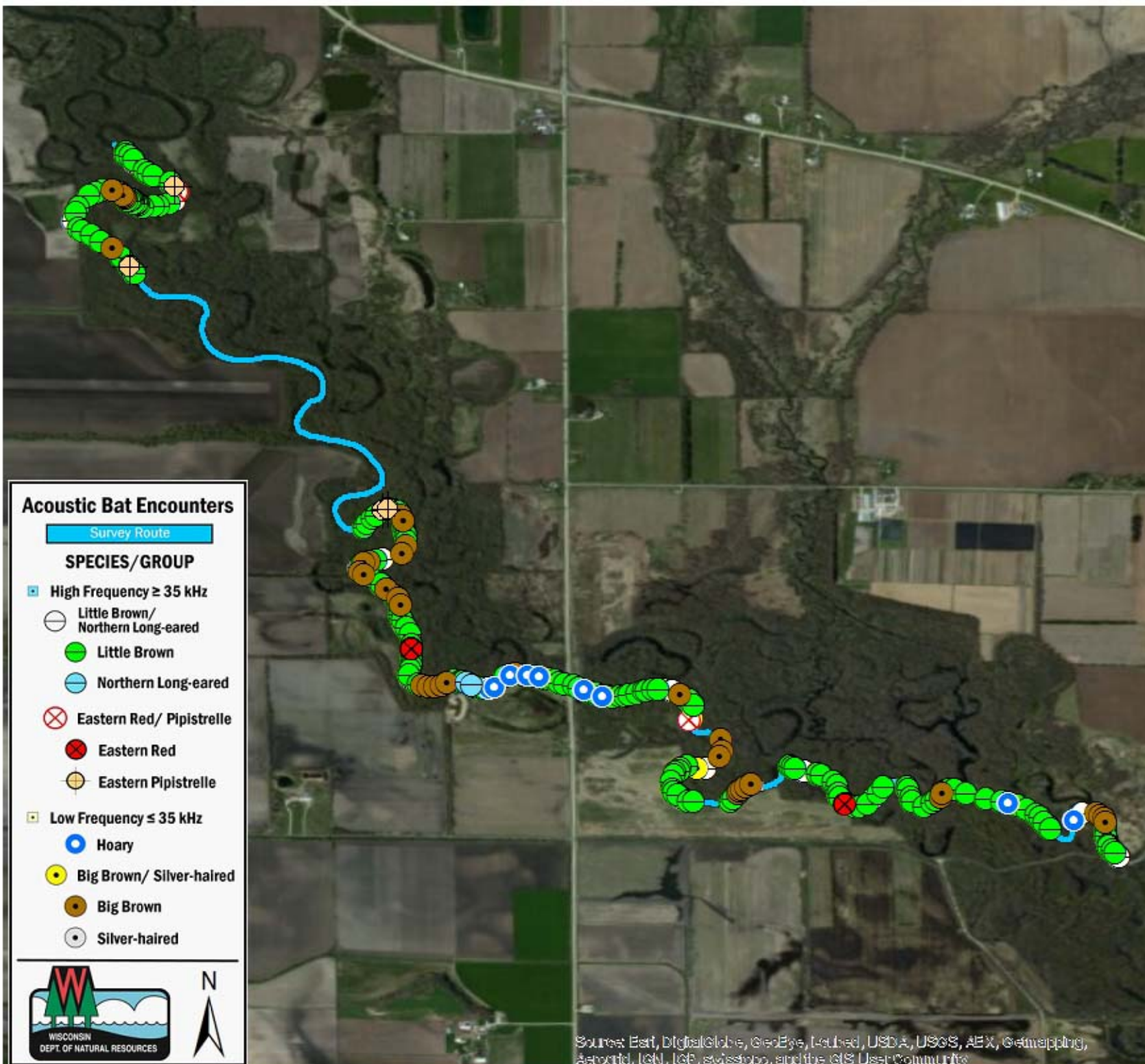
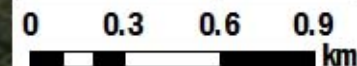
Relative Humidity (%)

74.0 72.0

Wind (m/s)

3.1 4.1

Notes: BATLAS Route. Survey completed NW to SE. Detector malfunctioned for 1.92 km/24 min



Acoustic Bat Encounters

Survey Route

SPECIES/GROUP

High Frequency ≥ 35 kHz

- Little Brown/Northern Long-eared
- Little Brown
- Northern Long-eared
- Eastern Red/Pipistrelle
- Eastern Red
- Eastern Pipistrelle

Low Frequency ≤ 35 kHz

- Hoary
- Big Brown/Silver-haired
- Big Brown
- Silver-haired



Source: Esri, DigitalGlobe, GeoEye, Earthstar, USDA, USGS, AeroGRID, IGN, ICF, swisstopo, and the GIS User Community