



## SURVEY RESULTS

Adams/Juneau County

Wisconsin River 3-2

23 June 2010

RT 733

Surveyors: K Ness & I Meyers

Route Length: 8.31 km

3 Species Encountered

### Time & Weather

Time (PM)

9:42      10:51

Temperature (F)

68.4      76.0

Relative Humidity (%)

76.0      81.0

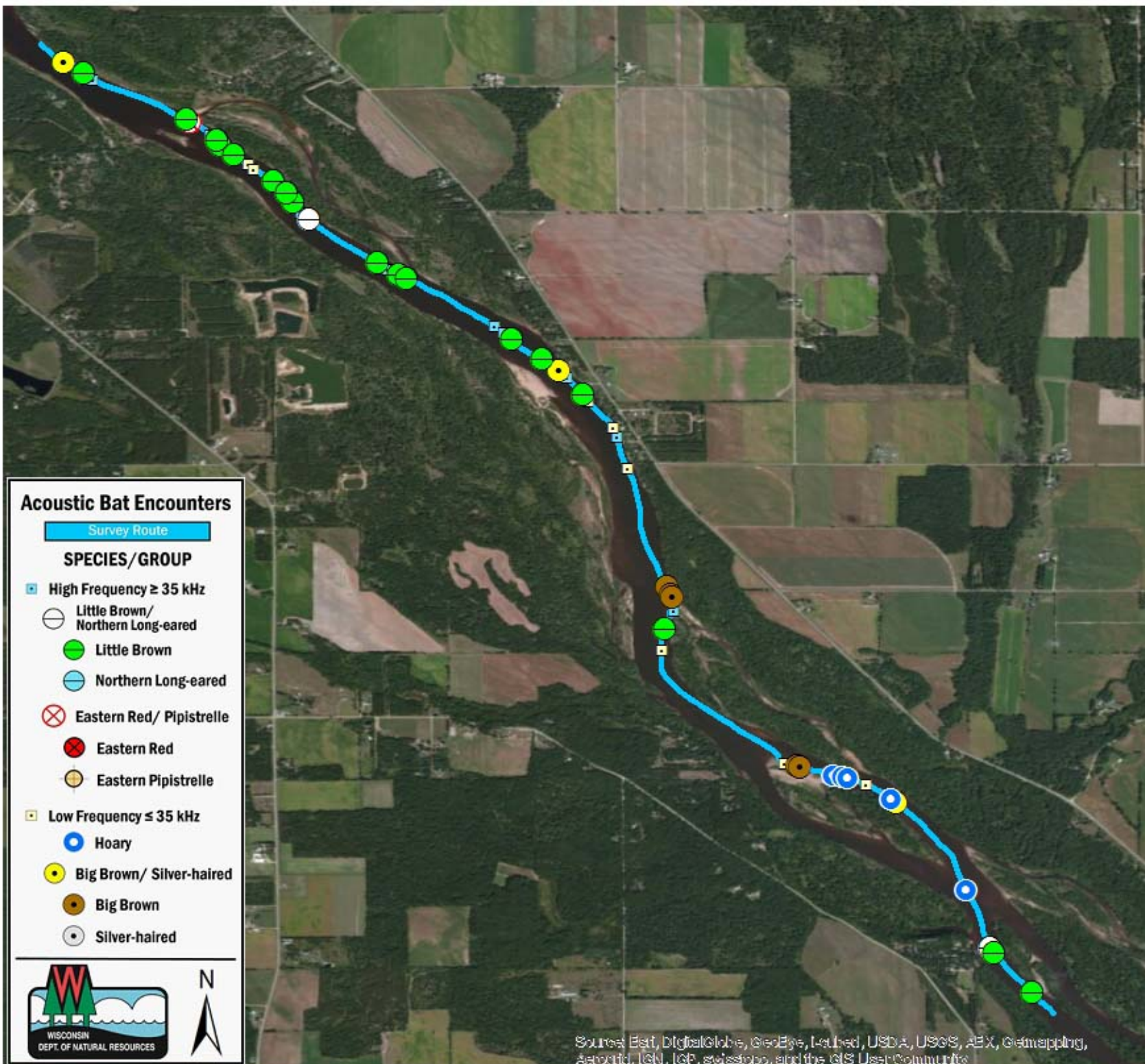
Wind (m/s)

3.0      2.3

Notes: BATLAS Route

Survey completed NW to SE

No access: Rt Adjusted 3.75 mi to N



### Acoustic Bat Encounters

Survey Route

#### SPECIES/GROUP

- High Frequency  $\geq 35$  kHz
  - Little Brown/  
Northern Long-eared
  - Little Brown
  - Northern Long-eared
  - ⊗ Eastern Red/ Pipistrelle
  - ⊗ Eastern Red
  - Eastern Pipistrelle
- Low Frequency  $\leq 35$  kHz
  - Hoary
  - Big Brown/ Silver-haired
  - Big Brown
  - Silver-haired



Sources: Esri, DigitalGlobe, GeoEye, Earthstar, USDA, USGS, AeroGRID, IGN, IGP, swisstopo, and the GIS User Community

