




Acoustic Bat Encounters

Survey Route

SPECIES/GROUP

High Frequency ≥ 35 kHz

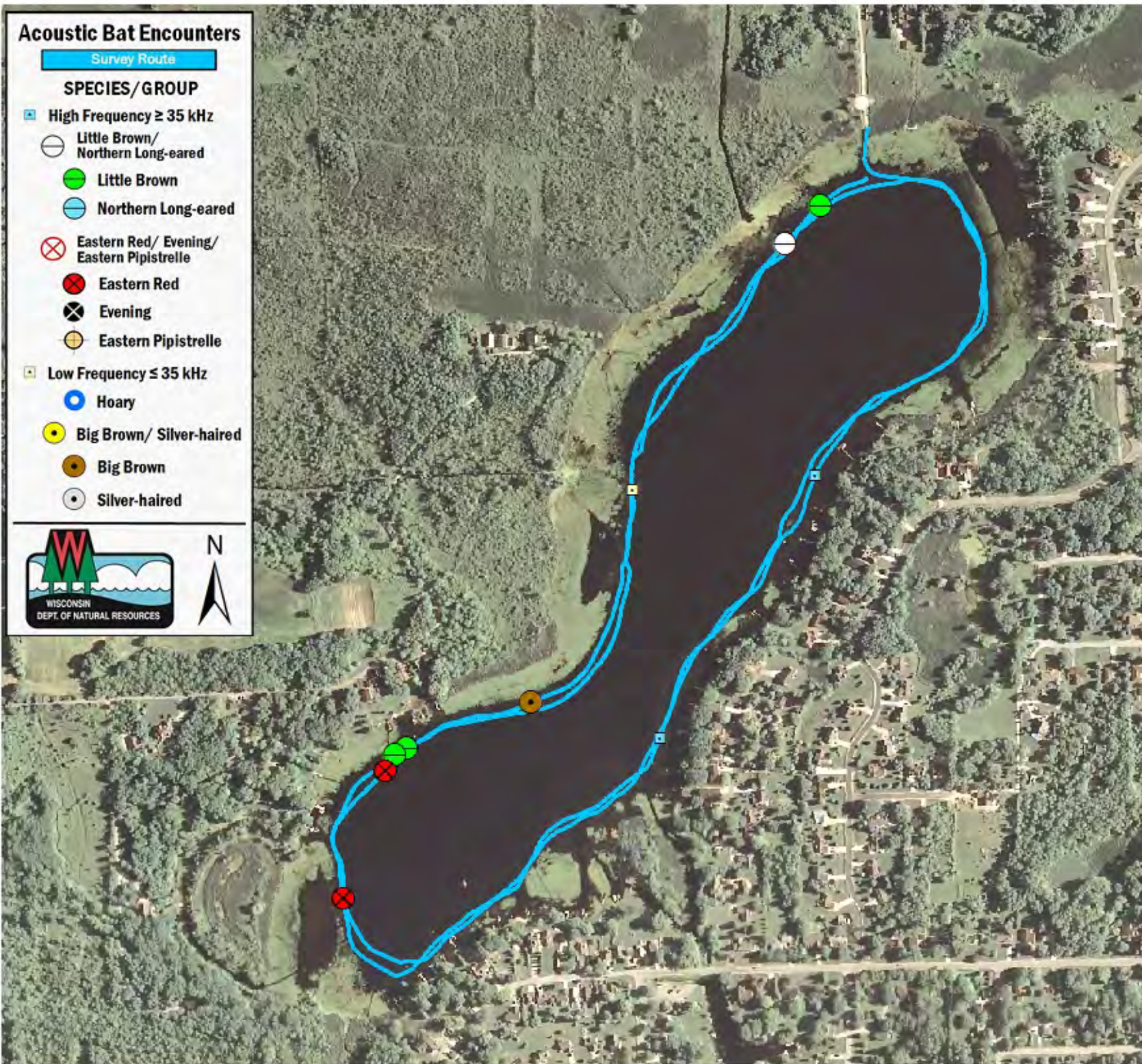
-  Little Brown/
Northern Long-eared
-  Little Brown
-  Northern Long-eared

Eastern Red/ Evening/ Eastern Pipistrelle

-  Eastern Red
-  Evening
-  Eastern Pipistrelle

Low Frequency ≤ 35 kHz

-  Hoary
-  Big Brown/ Silver-haired
-  Big Brown
-  Silver-haired



SURVEY RESULTS

Racine County

Long Lake

28 June 2010

RT 746

Surveyors: M Keenan & B Sadler

Route Length: 5.64 km

3 Species Encountered

7.14 Passes/Detector Hr

Time & Weather

Time (PM)

9:10 11:07

Temperature (F)

62.6 60.8

Relative Humidity (%)

82.0 82.0

Wind (m/s)

4.1 2.1

Notes: BATLAS Rt.

Surveyed counter-clockwise.

Two loops. 3 rain delays.

