



SURVEY RESULTS

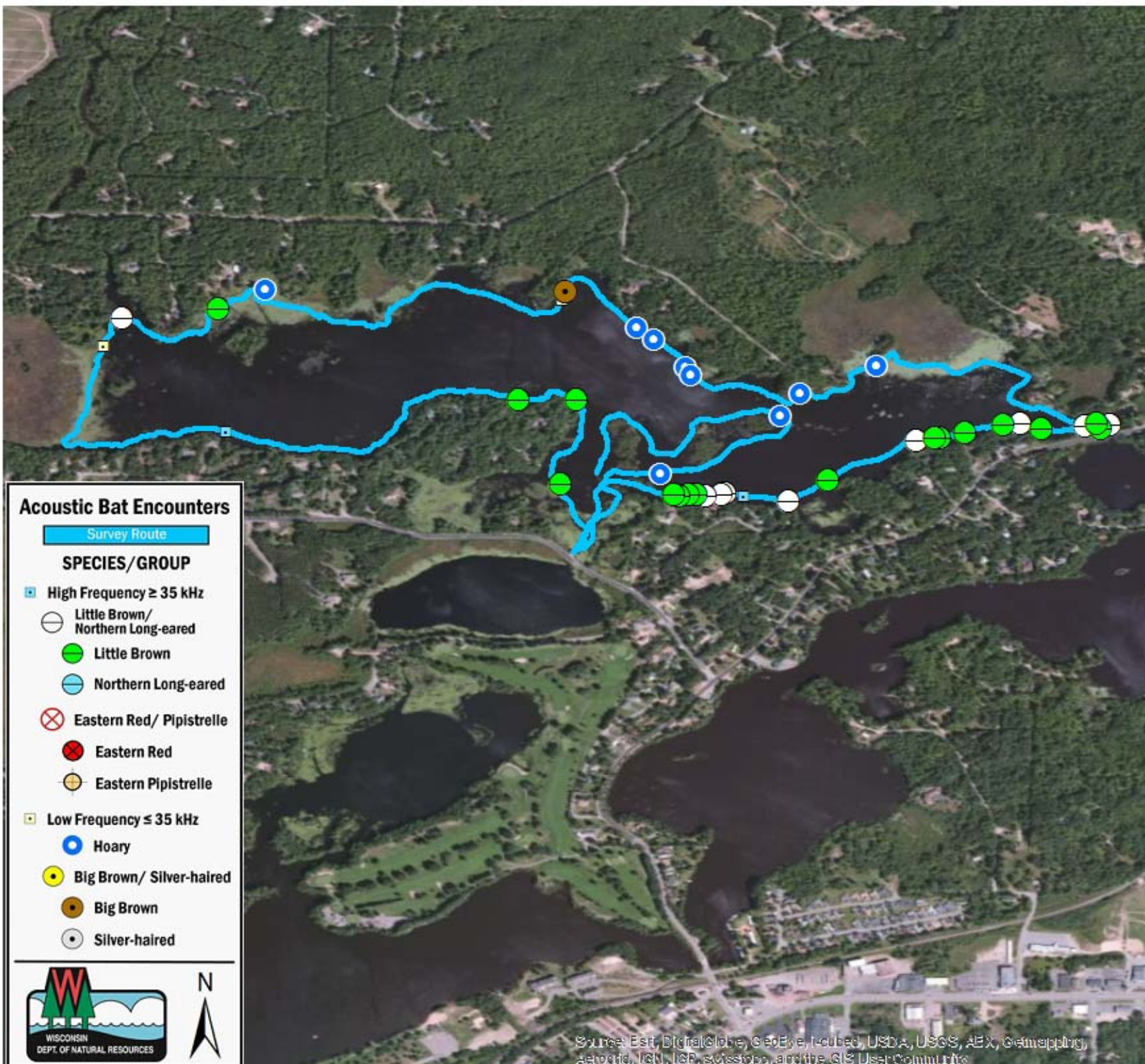
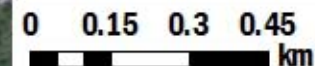
Oneida County
 Lake Creek
 2 July 2010
 RT 760

Surveyors: A Badje & D Van Doren
 Route Length: 7.29 km
 3 Species Encountered

Time & Weather

Time (PM)	
9:28	11:25
Temperature (F)	
72.0	70.0
Relative Humidity (%)	
59.0	63.0
Wind (m/s)	
4.65	4.65

Notes: BATLAS Route
 Survey completed clockwise



Acoustic Bat Encounters

Survey Route

SPECIES/GROUP

- High Frequency ≥ 35 kHz
 - Little Brown/
Northern Long-eared
 - Little Brown
 - Northern Long-eared
 - Eastern Red/ Pipistrelle
 - Eastern Red
 - Eastern Pipistrelle
- Low Frequency ≤ 35 kHz
 - Hoary
 - Big Brown/ Silver-haired
 - Big Brown
 - Silver-haired



Source: Esri, DigitalGlobe, GeoEye, i-cubed, USDA, USGS, AEX, Getmapping, Aerogrid, IGN, IGP, swisstopo, and the GIS User Community