

Acoustic Bat Encounters

Survey Route

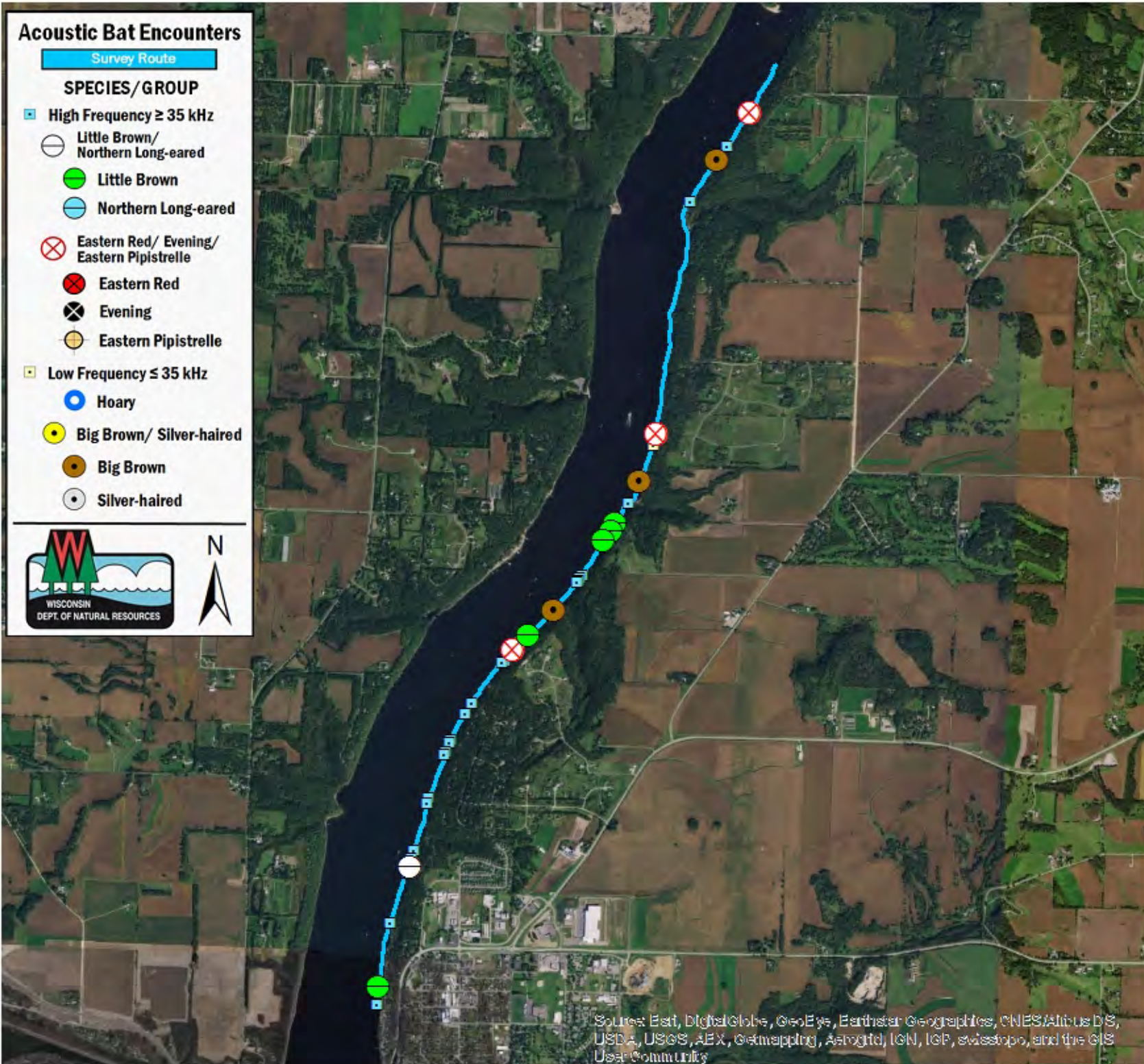
SPECIES/GROUP

High Frequency ≥ 35 kHz

- Little Brown/
Northern Long-eared
- Little Brown
- Northern Long-eared
- ⊗ Eastern Red/ Evening/
Eastern Pipistrelle
- ⊗ Eastern Red
- ⊗ Evening
- Eastern Pipistrelle

Low Frequency ≤ 35 kHz

- Hoary
- Big Brown/ Silver-haired
- Big Brown
- Silver-haired



SURVEY RESULTS

Pierce County
St. Croix River 16-6
2 July 2010
RT 780

Surveyors: J Soine & D Troester
Route Length: 7.97 km
2 Species Encountered
33.18 Passes/Detector Hr

Time & Weather

Time (PM)	
10:30	11:55
Temperature (F)	
76.4	75.2
Relative Humidity (%)	
66.0	67.0
Wind (m/s)	
2.7	4.0

Notes: BATLAS Rt.
Survey completed N to S.



Source: Esri, DigitalGlobe, GeoEye, Earthstar Geographics, CNES/Airbus DS, USDA, USGS, AeroX, Geomapping, AeroGRID, IGN, IGP, swisstopo, and the GIS User Community

