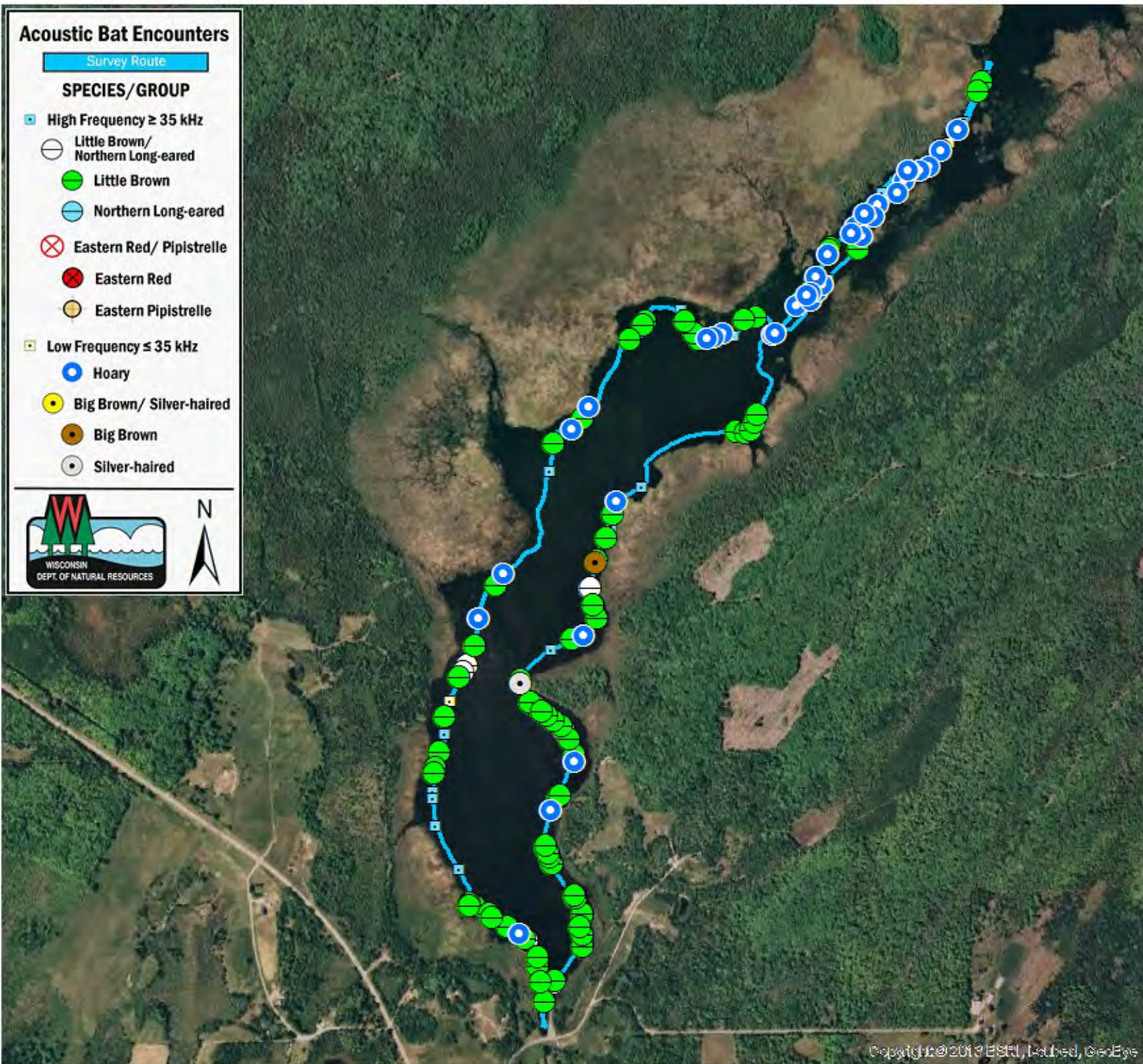


Acoustic Bat Encounters

Survey Route

SPECIES/GROUP

- High Frequency ≥ 35 kHz
 - Little Brown/
Northern Long-eared
 - Little Brown
 - Northern Long-eared
 - ⊗ Eastern Red/ Pipistrelle
 - Eastern Red
 - Eastern Pipistrelle
- Low Frequency ≤ 35 kHz
 - Hoary
 - Big Brown/ Silver-haired
 - Big Brown
 - Silver-haired



SURVEY RESULTS

Forest County
Hiles Millpond
6 July 2010
RT 789

Surveyors: D Romback & R Novy
Route Length: 7.69 km
4 Species Encountered
106.15 Passes/ Detector Hr

Time & Weather

Time (PM)	
9:24	11:08
Temperature (F)	
73.2	69.8
Relative Humidity (%)	
89.0	95.0
Wind (m/s)	
0.0	0.0

Notes: BATLAS Rt
Survey completed
counter-clockwise

