



SURVEY RESULTS

Portage County
Wisconsin River Flowage

7 July 2010

RT 797

Surveyors: A Badje & K Ness

Route Length: 8.17 km

3 Species Encountered

Time & Weather

Time (PM)

9:43 11:38

Temperature (F)

71.6 69.8

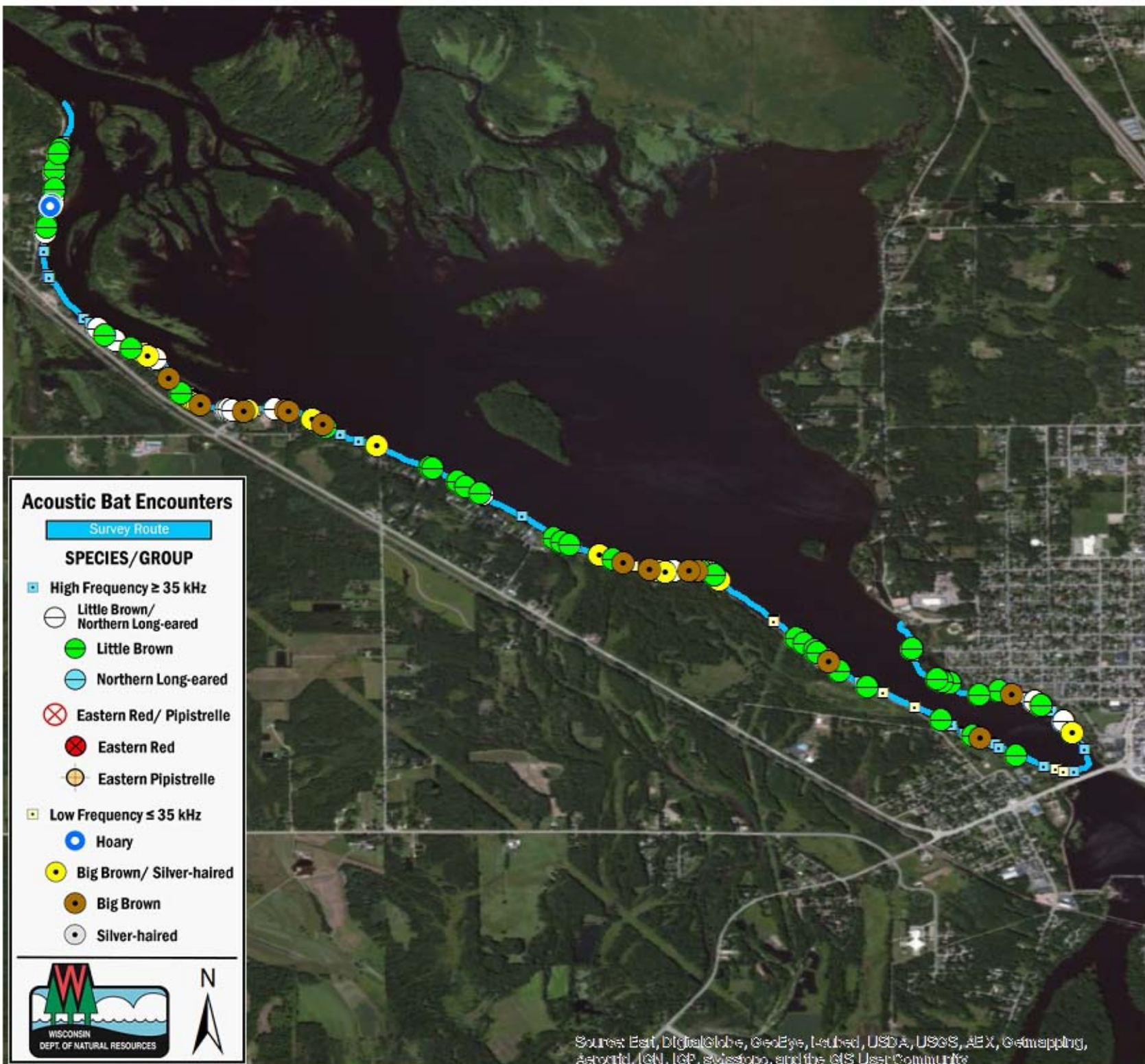
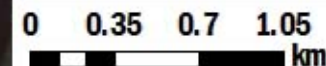
Relative Humidity (%)

94.0 94.0

Wind (m/s)

5.67 0.0

Notes: BATLAS Route
Survey completed NW to SE



Acoustic Bat Encounters

Survey Route

SPECIES/GROUP

- ▣ High Frequency ≥ 35 kHz
 - Little Brown/
Northern Long-eared
 - Little Brown
 - Northern Long-eared
 - ⊗ Eastern Red/ Pipistrelle
 - Eastern Red
 - Eastern Pipistrelle
- ▣ Low Frequency ≤ 35 kHz
 - Hoary
 - Big Brown/ Silver-haired
 - Big Brown
 - Silver-haired



Sources: Esri, DigitalGlobe, GeoEye, Earthstar, USDA, USGS, AEX, Getmapping, Aerogrid, IGN, IGP, Swisstopo, and the GIS User Community