

Acoustic Bat Encounters

Survey Route

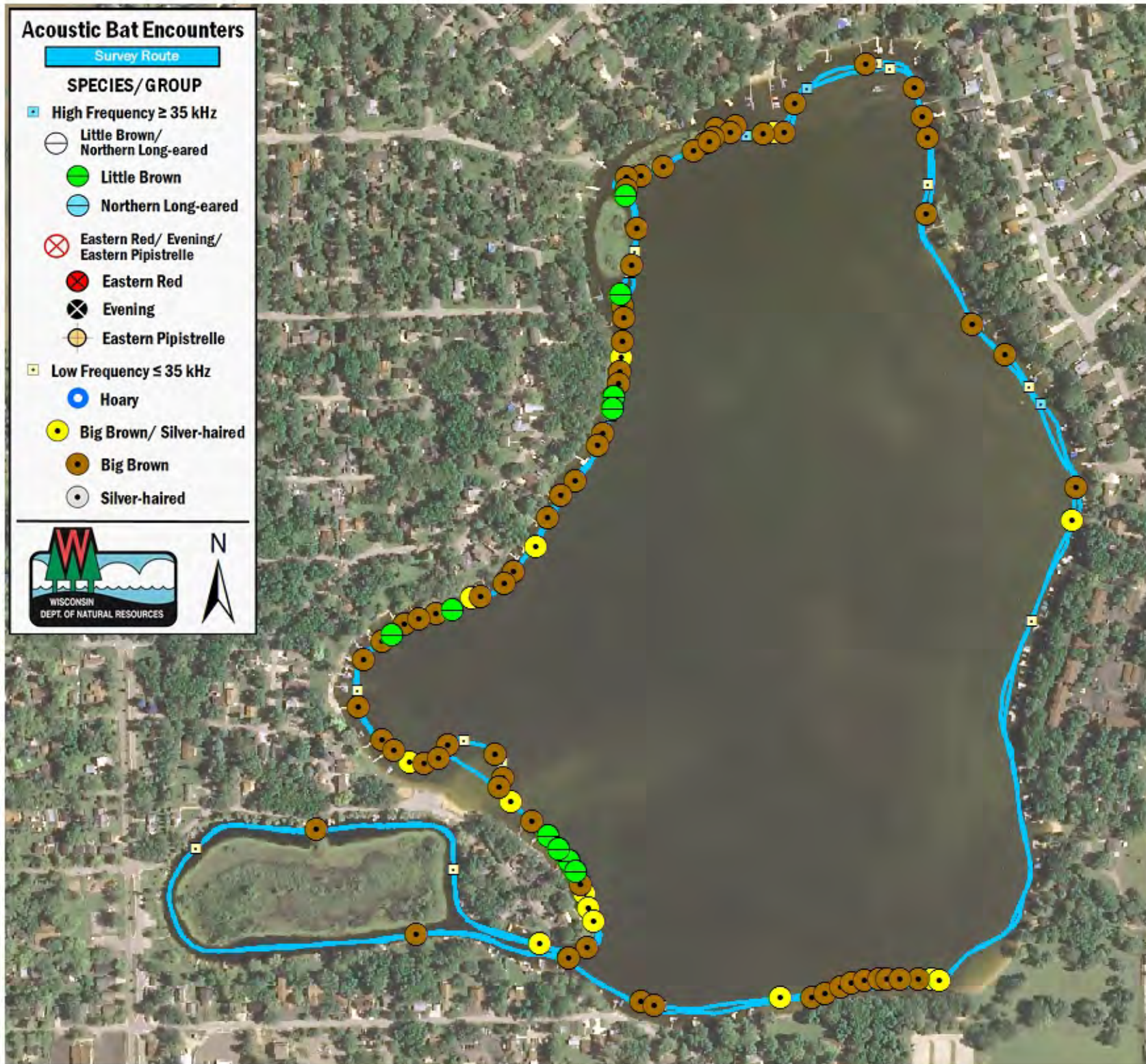
SPECIES/GROUP

High Frequency ≥ 35 kHz

- Little Brown/
Northern Long-eared
- Little Brown
- Northern Long-eared
- ⊗ Eastern Red/ Evening/
Eastern Pipistrelle
- Eastern Red
- ⊗ Evening
- Eastern Pipistrelle

Low Frequency ≤ 35 kHz

- Hoary
- Big Brown/ Silver-haired
- Big Brown
- Silver-haired



SURVEY RESULTS

Kenosha County

Paddock Lake

29 June 2010

RT 801

Surveyors: J Klemish & S McIntyre

Route Length: 8.0 km

2 Species Encountered

60.92 Passes/Detector Hr

Time & Weather

Time (PM)

9:08 11:19

Temperature (F)

60.1 52.0

Relative Humidity (%)

69.0 93.0

Wind (m/s)

1.5 0.0

Notes: BATLAS Rt.

Surveyed counter-clockwise.

Two loops around lake & inlet.



0 0.065 0.13 0.195
km