

Acoustic Bat Encounters

Survey Route

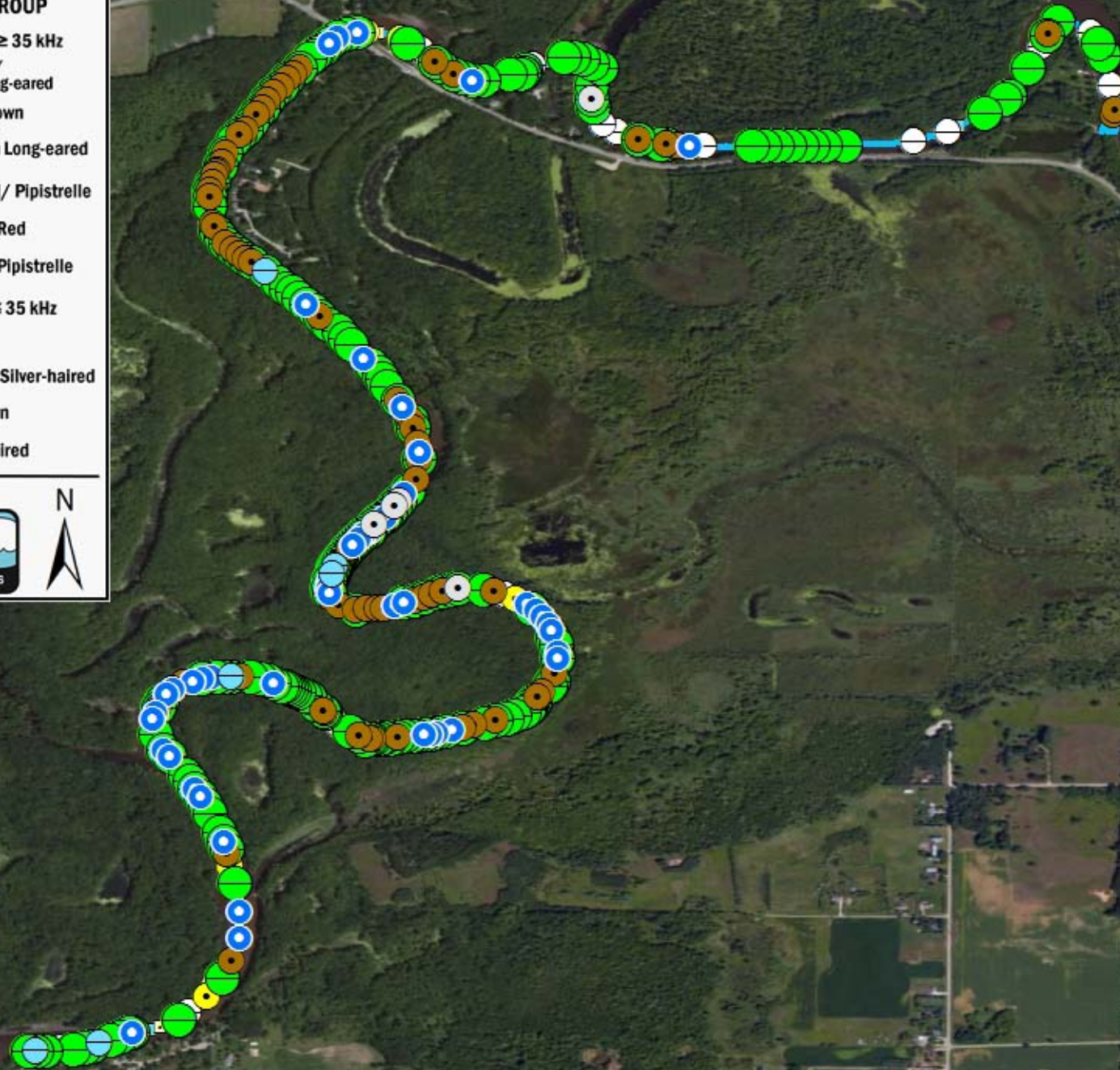
SPECIES/GROUP

High Frequency ≥ 35 kHz

-  Little Brown/
Northern Long-eared
-  Little Brown
-  Northern Long-eared
-  Eastern Red/ Pipistrelle
-  Eastern Red
-  Eastern Pipistrelle

Low Frequency ≤ 35 kHz

-  Hoary
-  Big Brown/ Silver-haired
-  Big Brown
-  Silver-haired



SURVEY RESULTS

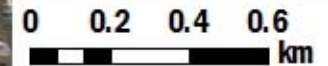
Waupaca County
Wolf River 1
9 July 2010
RT 810

Surveyors: G Emerson & A Badje
Route Length: 7.73 km
5 Species Encountered

Time & Weather

Time (PM)	
9:21	10:46
Temperature (F)	
73.4	73.4
Relative Humidity (%)	
69.0	69.0
Wind (m/s)	
1.6	2.6

Notes: BATLAS Route
Survey completed NE to SW



Source: Esri, DigitalGlobe, GeoEye, Earthstar, USDA, USGS, AeroGRID, IGN, IGP, swisstopo, and the GIS User Community