


# Acoustic Bat Encounters



Survey Route

## SPECIES/GROUP





High Frequency  $\geq 35$  kHz

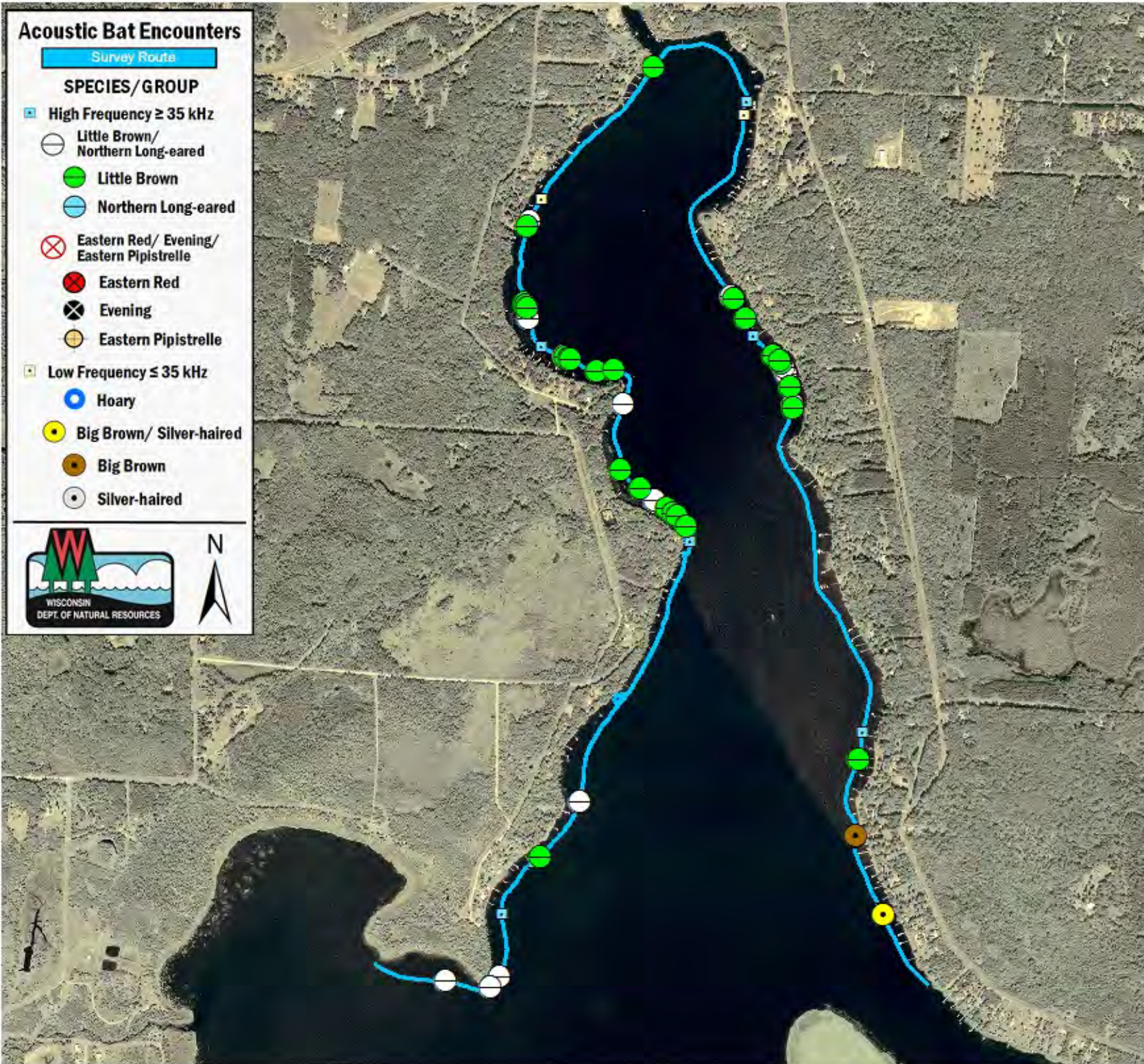
-  Little Brown/  
Northern Long-eared
-  Little Brown
-  Northern Long-eared

Eastern Red/ Evening/  
Eastern Pipistrelle

-  Eastern Red
-  Evening
-  Eastern Pipistrelle

Low Frequency  $\leq 35$  kHz

-  Hoary
-  Big Brown/ Silver-haired
-  Big Brown
-  Silver-haired



## SURVEY RESULTS

Burnett County

Clam Lake

10 July 2010

RT 821

Surveyors: H Kaarakka & T Brandt

Route Length: 7.95 km

2 Species Encountered

32.11 Passes/ Detector Hr

### Time & Weather

Time (PM)

9:33      11:27

Temperature (F)

77.0      75.9

Relative Humidity (%)

57.0      57.0

Wind (m/s)

3.6      8.2

Notes: BATLAS Rt.  
Survey completed  
counter-clockwise.

