

Acoustic Bat Encounters

Survey Route

SPECIES/GROUP

High Frequency ≥ 35 kHz

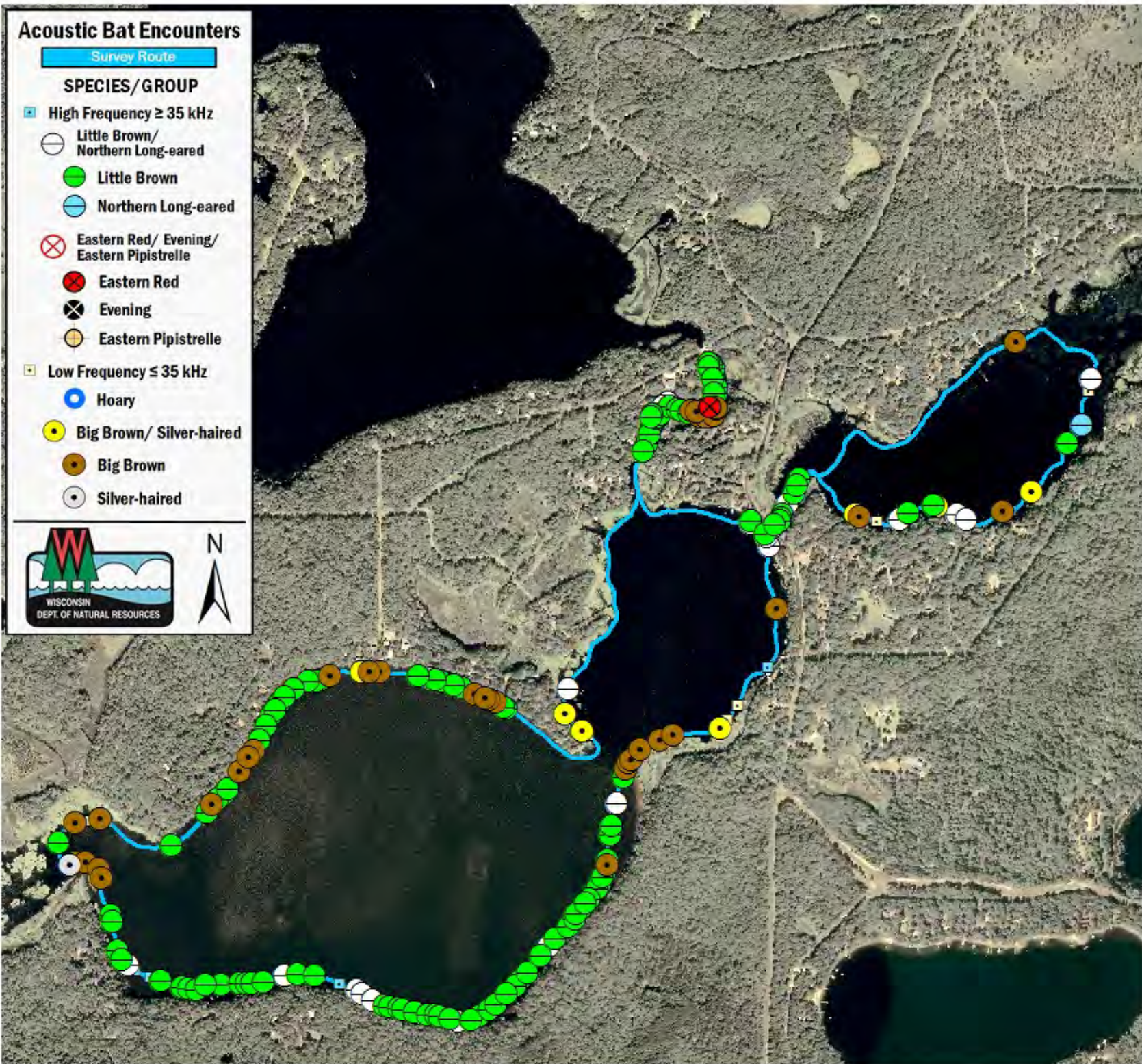
- Little Brown/
Northern Long-eared
- Little Brown
- Northern Long-eared

Eastern Red/ Evening/ Eastern Pipistrelle

- Eastern Red
- Evening
- Eastern Pipistrelle

Low Frequency ≤ 35 kHz

- Hoary
- Big Brown/ Silver-haired
- Big Brown
- Silver-haired



SURVEY RESULTS

Burnett County

Love/ Falk Lake

11 July 2010

RT 822

Surveyors: T Brandt & H Kaarakka

Route Length: 8.06 km

5 Species Encountered

120.0 Passes/Detector Hr

Time & Weather

Time (PM)

9:24 11:37

Temperature (F)

64.8 60.4

Relative Humidity (%)

78.0 80.0

Wind (m/s)

1.5 1.5

Notes: BATLAS Rt.

Survey completed
counter-clockwise.

