

Acoustic Bat Encounters

Survey Route

SPECIES/GROUP

High Frequency ≥ 35 kHz

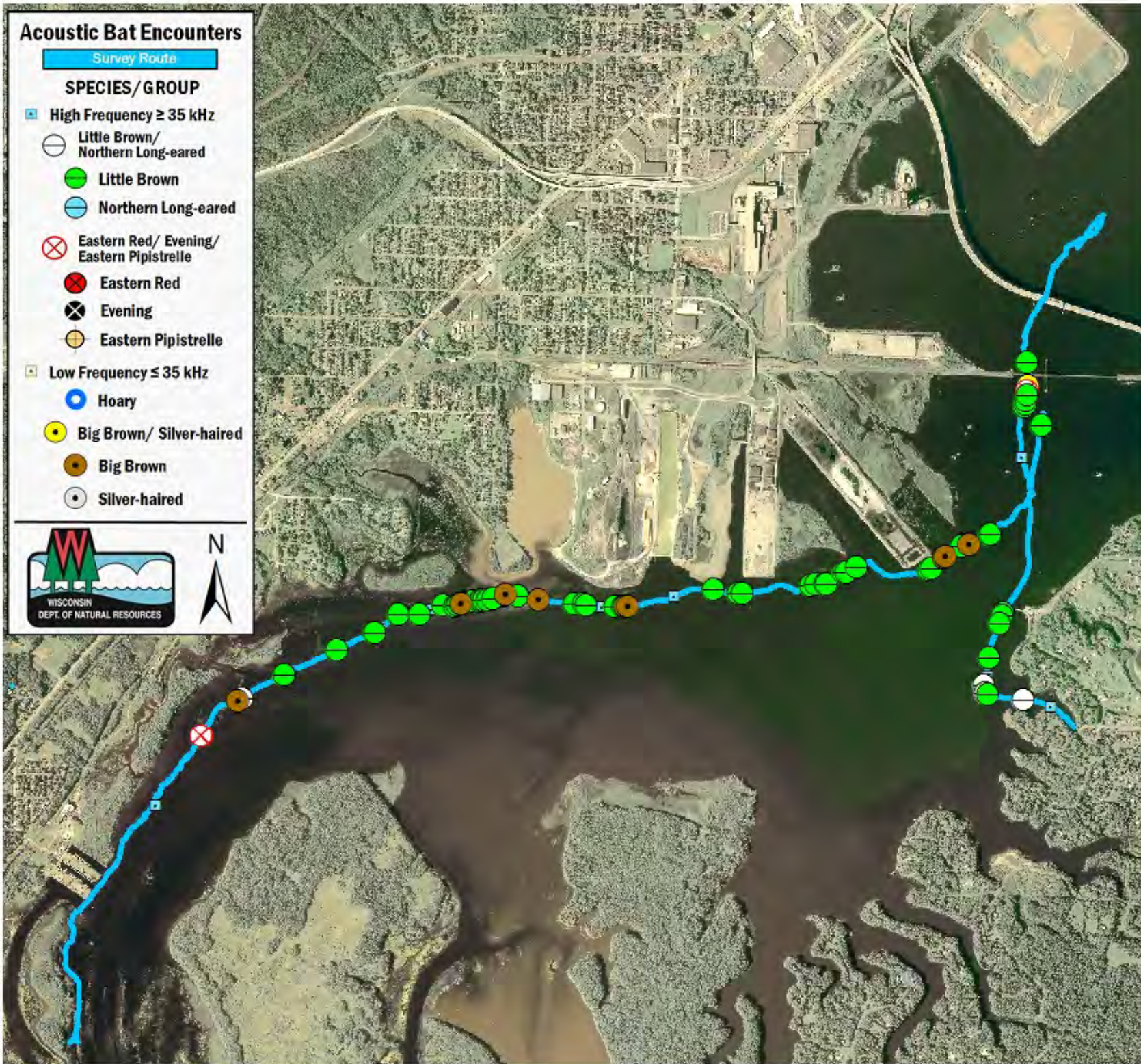
- Little Brown/
Northern Long-eared
- Little Brown
- Northern Long-eared

Eastern Red/ Evening/ Eastern Pipistrelle

- Eastern Red
- Evening
- Eastern Pipistrelle

Low Frequency ≤ 35 kHz

- Hoary
- Big Brown/ Silver-haired
- Big Brown
- Silver-haired



SURVEY RESULTS

Douglas County
St. Louis River 1
12 July 2010
RT 831

Surveyors: J Klemish & S McIntyre
Route Length: 10.01 km
2 Species Encountered
32.11 Passes/ Detector Hr

Time & Weather

Time (PM)	
9:38	1:00 AM
Temperature (F)	
62.6	60.8
Relative Humidity (%)	
88.0	88.0
Wind (m/s)	
2.1	2.6

Notes: BATLAS Rt.
Surveyed SW to NE to SE.
Data missing from 12:16-12:30am.

