

# Acoustic Bat Encounters

Survey Route

## SPECIES/GROUP

High Frequency  $\geq 35$  kHz

Little Brown/  
Northern Long-eared

Little Brown

Northern Long-eared

Eastern Red/ Evening/  
Eastern Pipistrelle

Eastern Red

Evening

Eastern Pipistrelle

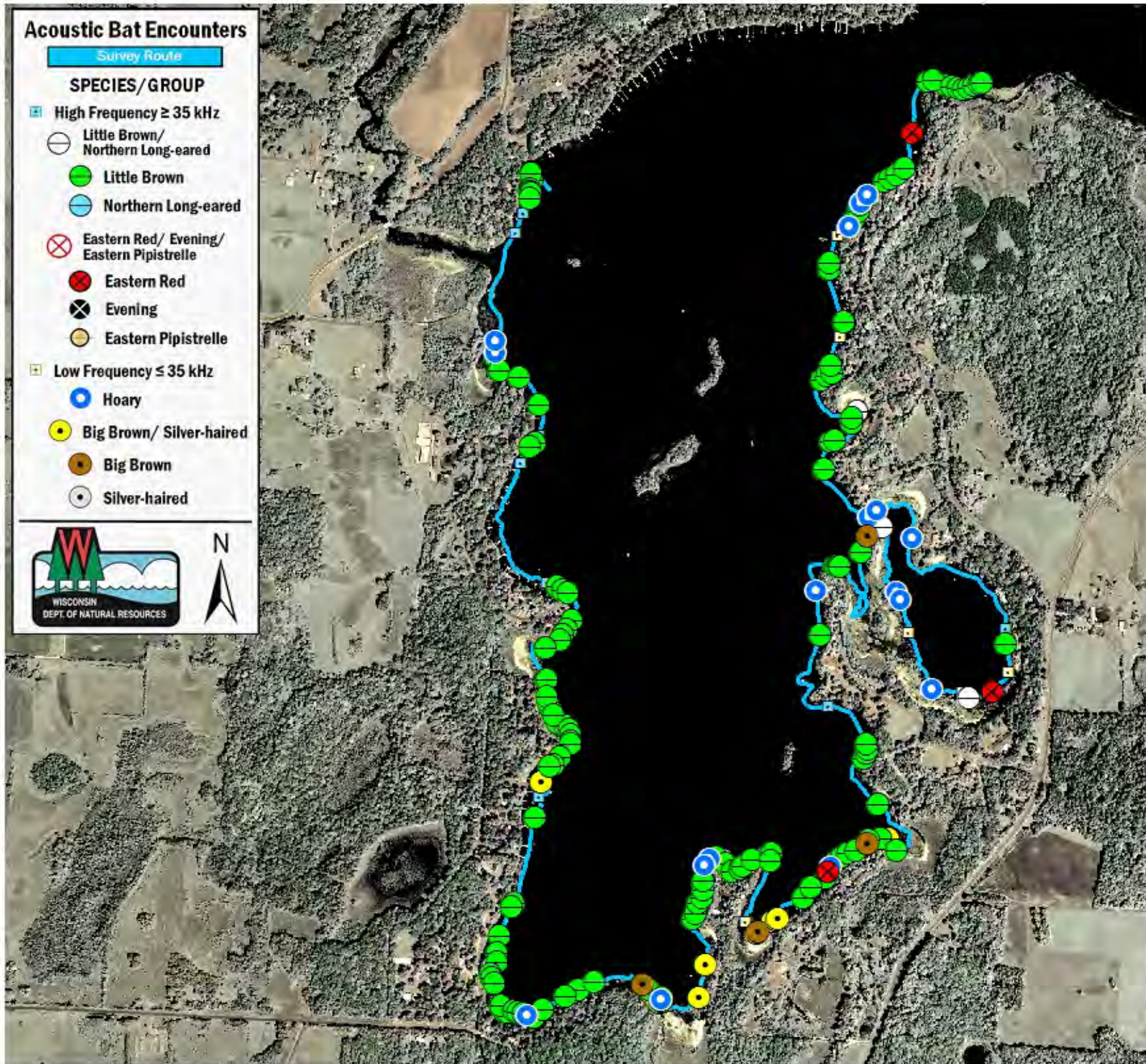
Low Frequency  $\leq 35$  kHz

Hoary

Big Brown/ Silver-haired

Big Brown

Silver-haired



## SURVEY RESULTS

Burnett County

Wood Lake

10 July 2010

RT 840

Surveyors: S McIntyre & J Klemish

Route Length: 8.71 km

4 Species Encountered

90.75 Passes/Detector Hr

### Time & Weather

Time (PM)

9:43 12:23 AM

Temperature (F)

77.0 76.1

Relative Humidity (%)

56.0 56.0

Wind (m/s)

3.1 6.2

Notes: BATLAS RL

Survey completed  
counter-clockwise.



0 0.15 0.3 0.45 km