



## SURVEY RESULTS

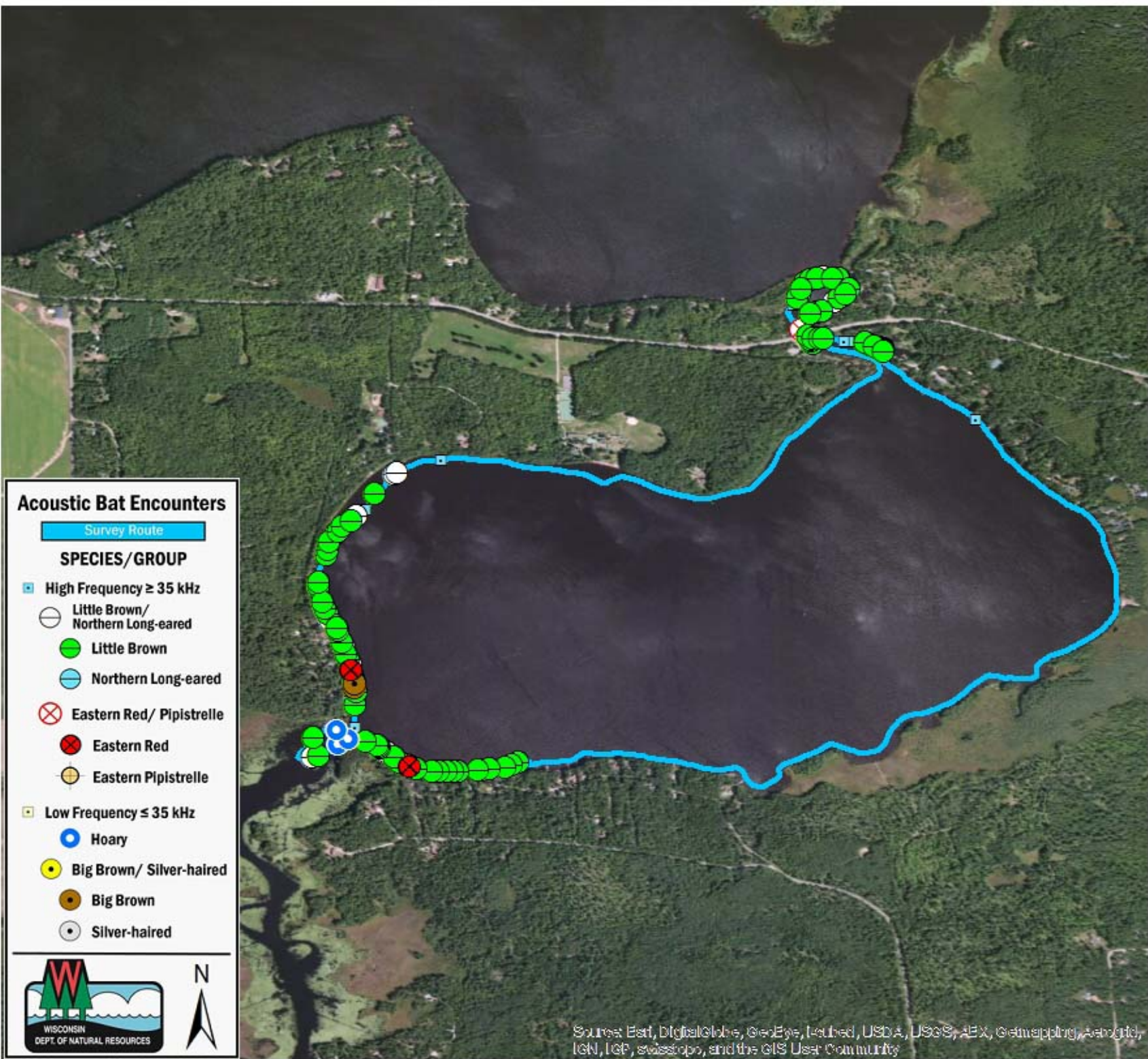
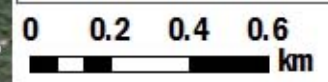
Oneida County  
Sand Lake  
14 July 2010  
RT 848

Surveyors: G Emerson & T Fitzgerald  
Route Length: 7.60 km  
4 Species Encountered

### Time & Weather

Time (PM)	
9:22	11:14
Temperature (F)	
66.2	66.6
Relative Humidity (%)	
100.0	100.0
Wind (m/s)	
2.0	4.6

Notes: BATLAS Route. Survey completed clockwise. PDA S/SE shore malfunction (44 min/2.69km). Windy on N shore - few bats.



### Acoustic Bat Encounters

- Survey Route**
- SPECIES/GROUP**
- High Frequency  $\geq 35$  kHz
    - Little Brown/Northern Long-eared
    - Little Brown
    - Northern Long-eared
    - ⊗ Eastern Red/ Pipistrelle
      - Eastern Red
      - Eastern Pipistrelle
  - Low Frequency  $\leq 35$  kHz
    - Hoary
    - Big Brown/ Silver-haired
    - Big Brown
    - Silver-haired



Source: Esri, DigitalGlobe, GeoEye, iSatellite, USDA, USGS, AEX, Getmapping, Aerogrid, IGN, IGP, swisstopo, and the GIS User Community