

Acoustic Bat Encounters

Survey Route

SPECIES/GROUP

High Frequency ≥ 35 kHz

Little Brown/
Northern Long-eared

Little Brown

Northern Long-eared

Eastern Red/ Evening/
Eastern Pipistrelle

Eastern Red

Evening

Eastern Pipistrelle

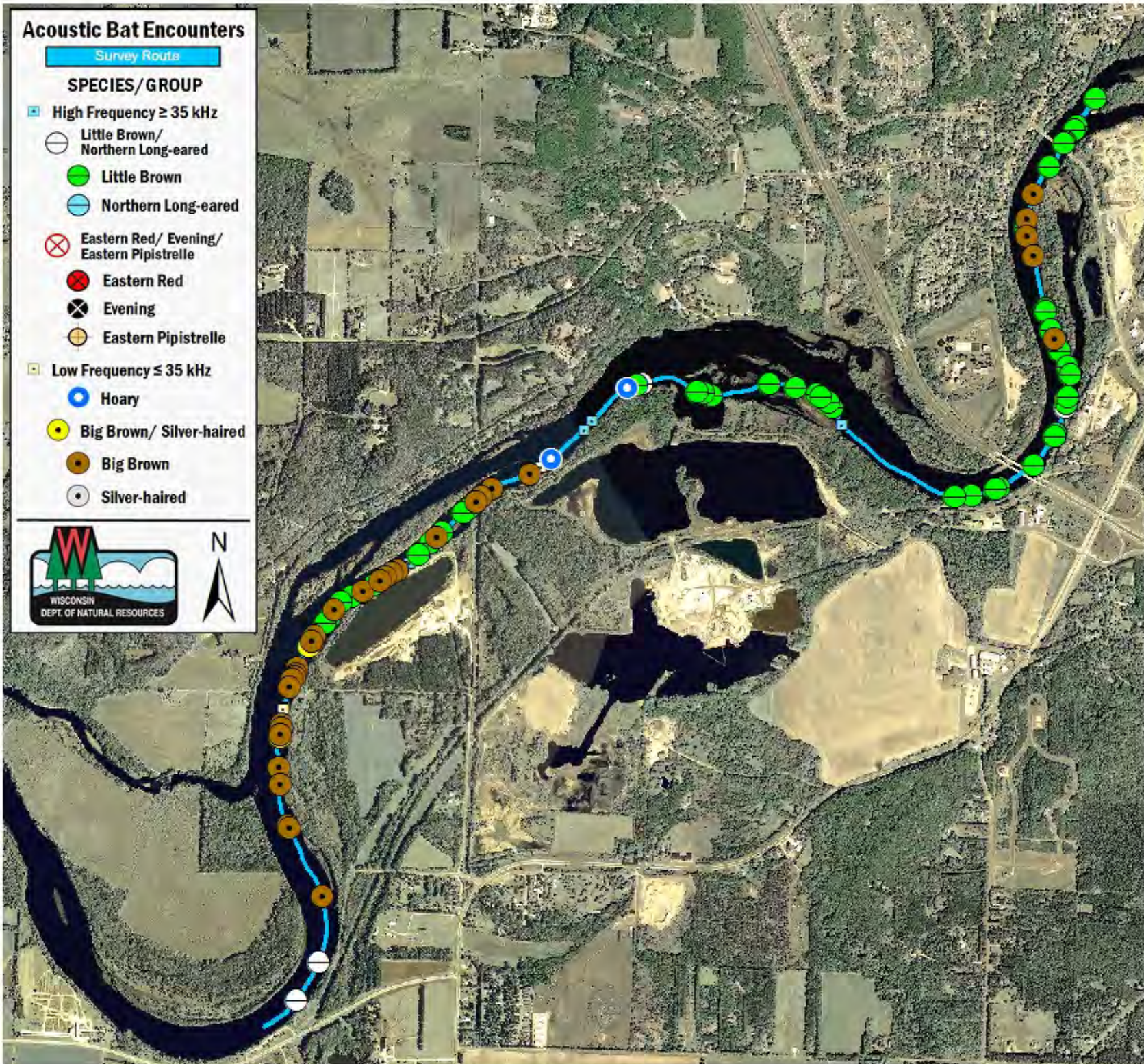
Low Frequency ≤ 35 kHz

Hoary

Big Brown/ Silver-haired

Big Brown

Silver-haired



SURVEY RESULTS

Eau Claire County

Chippewa River 2

9 July 2010

RT 856

Surveyors: D Troester & J Soine

Route Length: 7.87 km

3 Species Encountered

89.61 Passes/Detector Hr

Time & Weather

Time (PM)

9:35 10:52

Temperature (F)

70.0 66.9

Relative Humidity (%)

73.0 81.0

Wind (m/s)

0.0 0.0

Notes: BATLAS Rt.
Survey completed NE to SW.



0 0.25 0.5 0.75 km