

Acoustic Bat Encounters

Survey Route

SPECIES/GROUP

High Frequency ≥ 35 kHz

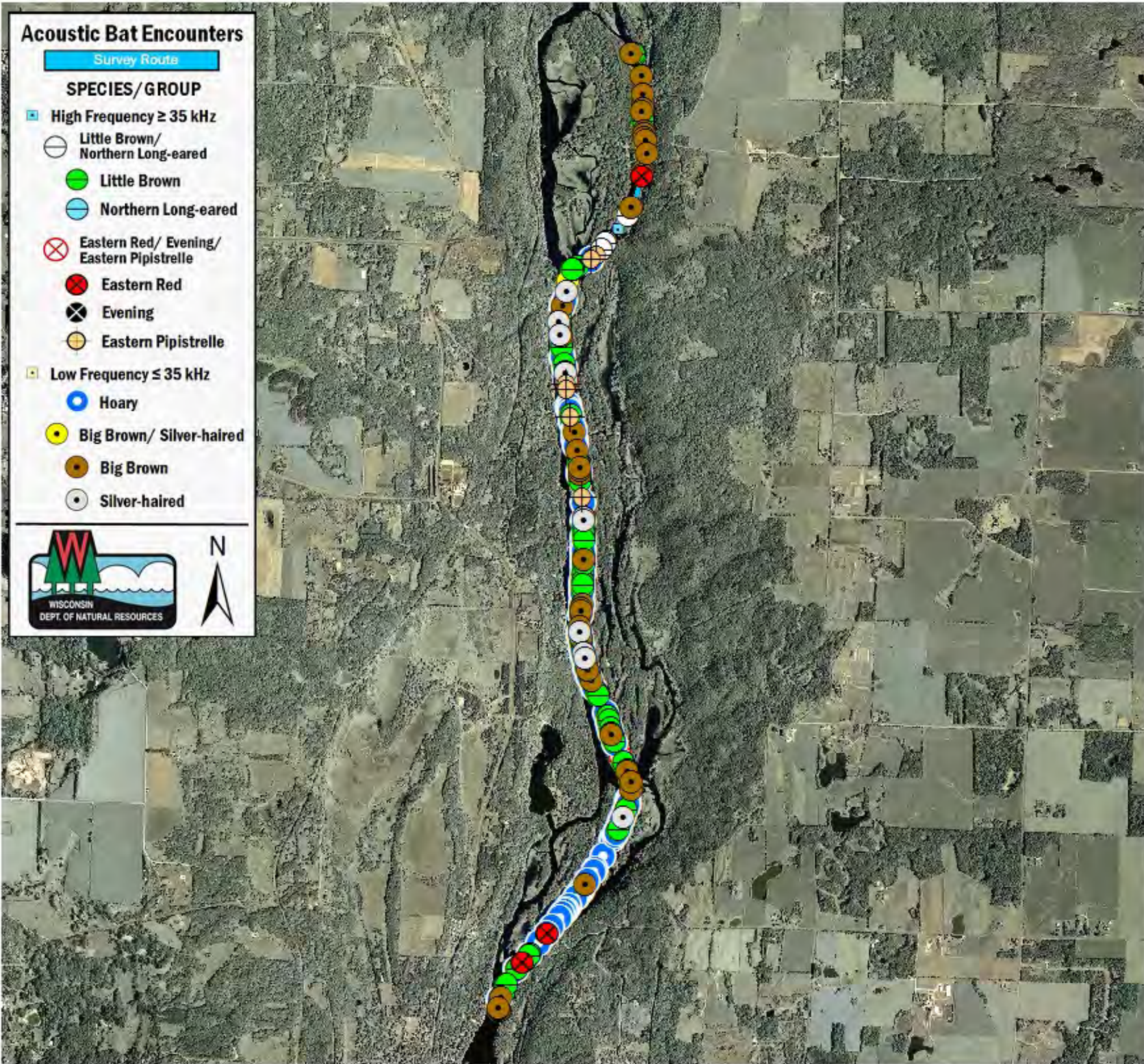
- Little Brown/
Northern Long-eared
- Little Brown
- Northern Long-eared

Eastern Red/ Evening/ Eastern Pipistrelle

- Eastern Red
- Evening
- Eastern Pipistrelle

Low Frequency ≤ 35 kHz

- Hoary
- Big Brown/ Silver-haired
- Big Brown
- Silver-haired



SURVEY RESULTS

Polk/St. Croix County

St. Croix River 16-2

15 July 2010

RT 862

Surveyors: H Kaarakka & T Brandt

Route Length: 8.15 km

6 Species Encountered

249.89 Passes/Detector Hr

Time & Weather

Time (PM)

9:30 11:01

Temperature (F)

71.0 66.2

Relative Humidity (%)

69.0 83.0

Wind (m/s)

1.5 3.1

Notes: BATLAS Rt.
Survey completed N to S.

