

# Acoustic Bat Encounters

Survey Route

## SPECIES/GROUP

High Frequency  $\geq 35$  kHz

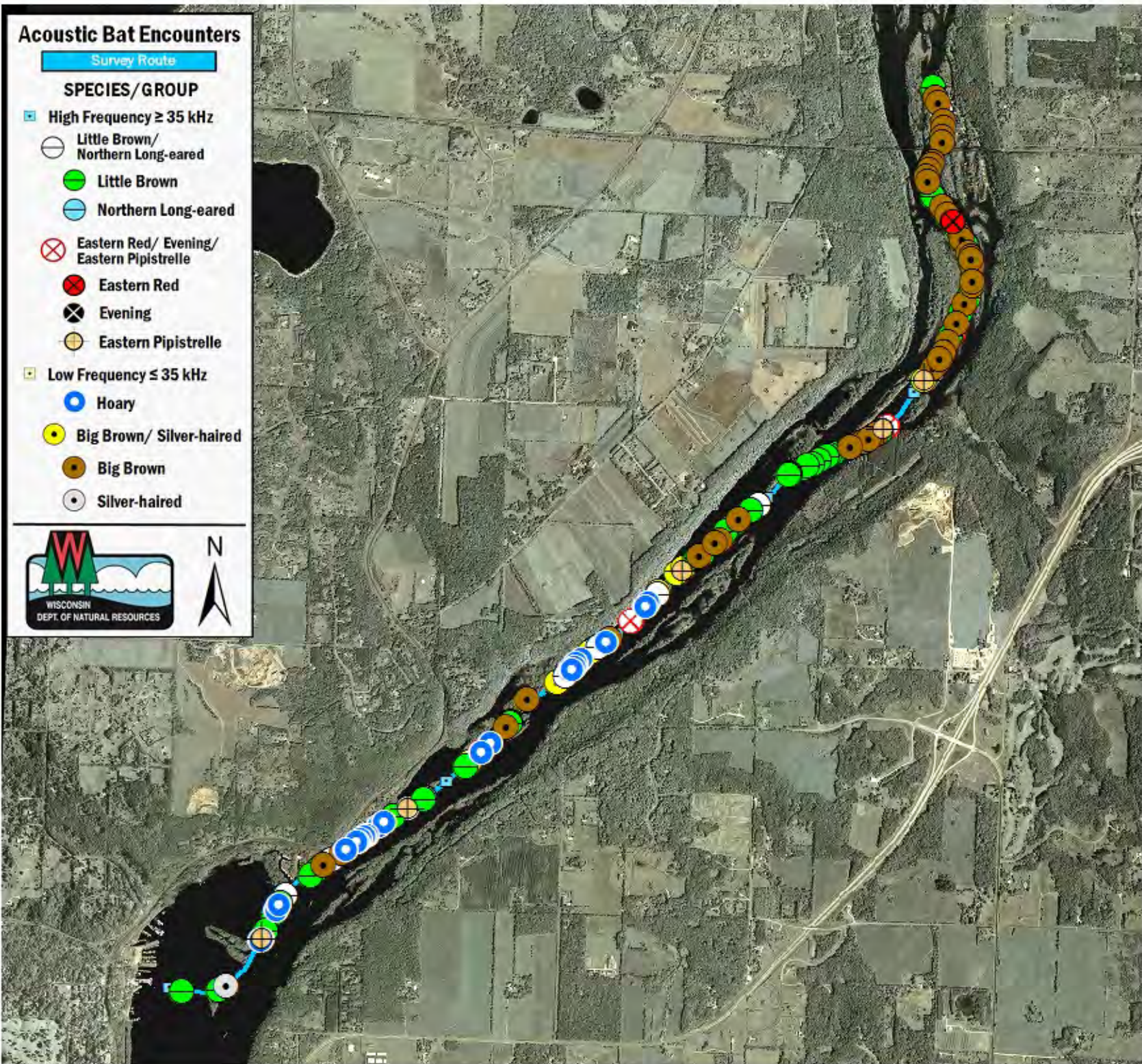
- Little Brown/  
Northern Long-eared
- Little Brown
- Northern Long-eared

Eastern Red/ Evening/  
Eastern Pipistrelle

- Eastern Red
- Evening
- Eastern Pipistrelle

Low Frequency  $\leq 35$  kHz

- Hoary
- Big Brown/ Silver-haired
- Big Brown
- Silver-haired



## SURVEY RESULTS

St. Croix County  
St. Croix River 16-3  
16 July 2010  
RT 868

Surveyors: H Kaarakka & T Brandt

Route Length: 8.5 km  
6 Species Encountered  
152.94 Passes/Detector Hr

### Time & Weather

Time (PM)

9:30      11:12

Temperature (F)

75.2      66.2

Relative Humidity (%)

57.0      88.0

Wind (m/s)

0.0      0.0

Notes: BATLAS Rt.  
Survey completed N to S.

