

Acoustic Bat Encounters

Survey Route

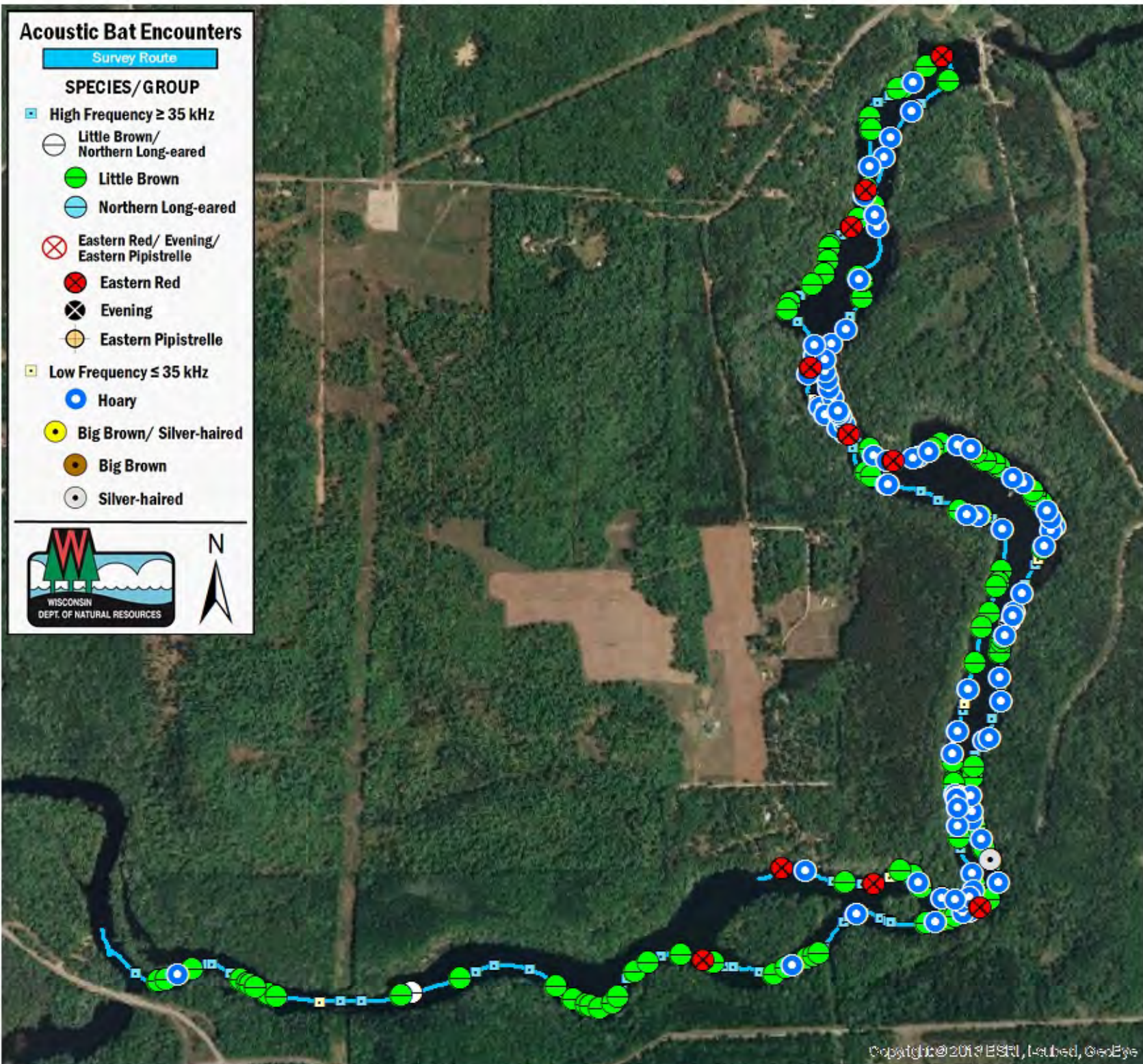
SPECIES/GROUP

High Frequency ≥ 35 kHz

- Little Brown/
Northern Long-eared
- Little Brown
- Northern Long-eared
- Eastern Red/ Evening/
Eastern Pipistrelle
- Eastern Red
- Evening
- Eastern Pipistrelle

Low Frequency ≤ 35 kHz

- Hoary
- Big Brown/ Silver-haired
- Big Brown
- Silver-haired



SURVEY RESULTS

Marinette County
Johnson Falls Flowage
17 July 2010
RT 869

Surveyors: D Romback & C Pavc

Route Length: 8.24 km

4 Species Encountered

180.49 Passes/Detector Hr

Time & Weather

Time (PM)

9:11 11:13

Temperature (F)

69.1 67.1

Relative Humidity (%)

71.0 78.0

Wind (m/s)

0.0 0.0

Notes: BATLAS Rt.
Survey completed
counter-clockwise.

