



## SURVEY RESULTS

Oneida County  
 Wisconsin River 7-2  
 15 July 2010  
 RT 870

Surveyors: G Emerson & T Fitzgerald  
 Route Length: 7.72 km  
 3 Species Encountered

### Time & Weather

Time (PM)

9:34      11:25

Temperature (F)

66.2      65.3

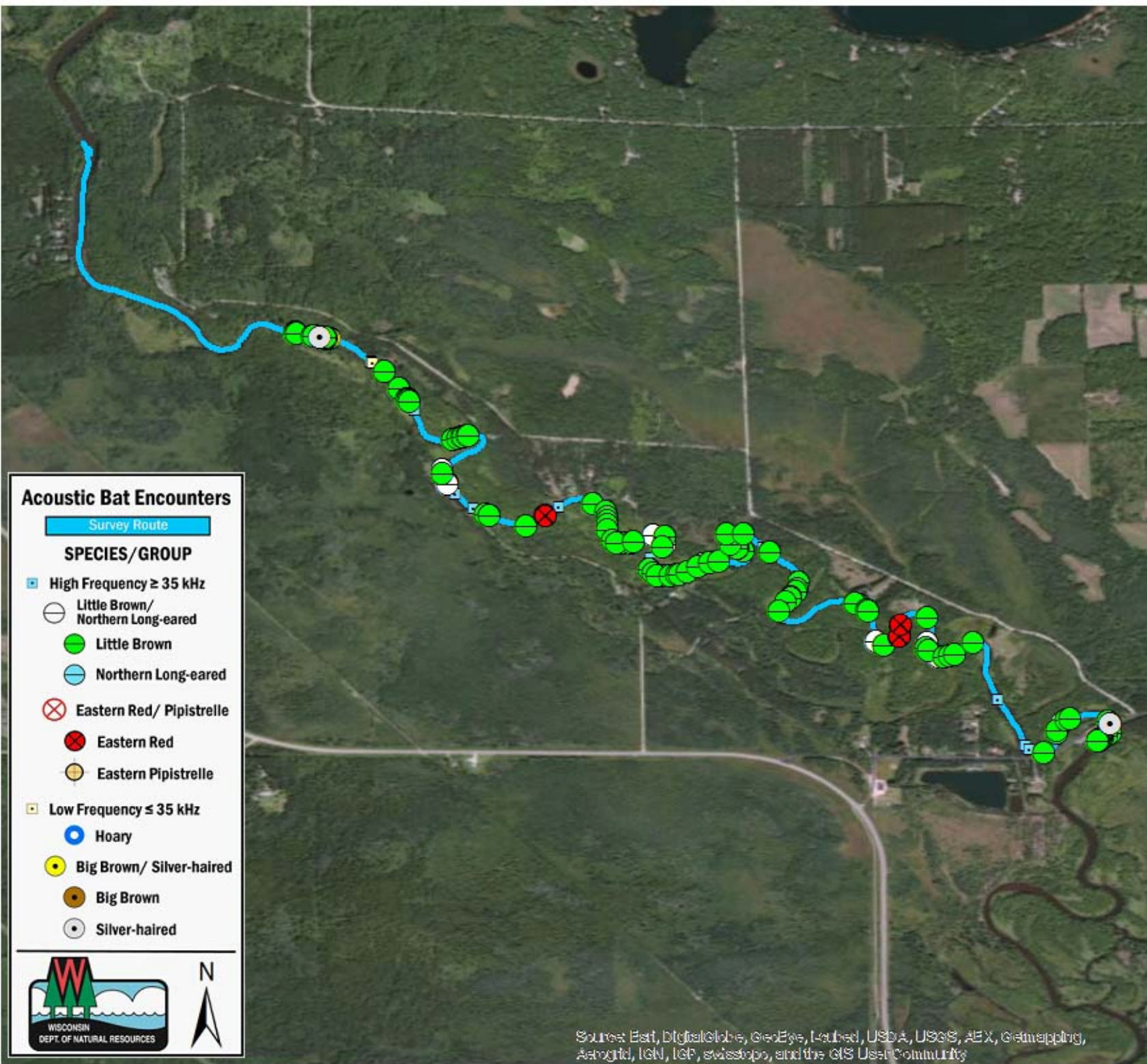
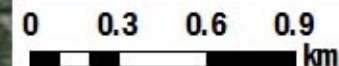
Relative Humidity (%)

74.0      79.0

Wind (m/s)

1.6      2.6

Notes: BATLAS Route. Survey completed West to East. PDA malfunction in initial 27 min/1.64km



### Acoustic Bat Encounters

Survey Route

#### SPECIES/GROUP

- ▣ High Frequency  $\geq 35$  kHz
  - Little Brown/  
Northern Long-eared
  - Little Brown
  - Northern Long-eared
  - ⊗ Eastern Red/ Pipistrelle
  - Eastern Red
  - Eastern Pipistrelle
- ▣ Low Frequency  $\leq 35$  kHz
  - Hoary
  - Big Brown/ Silver-haired
  - Big Brown
  - Silver-haired



Source: Esri, DigitalGlobe, GeoEye, Earthstar, USDA, USGS, AEX, Getmapping, Aerogrid, IGN, IGP, swisstopo, and the GIS User Community