

Acoustic Bat Encounters

Survey Route

SPECIES/GROUP

High Frequency ≥ 35 kHz

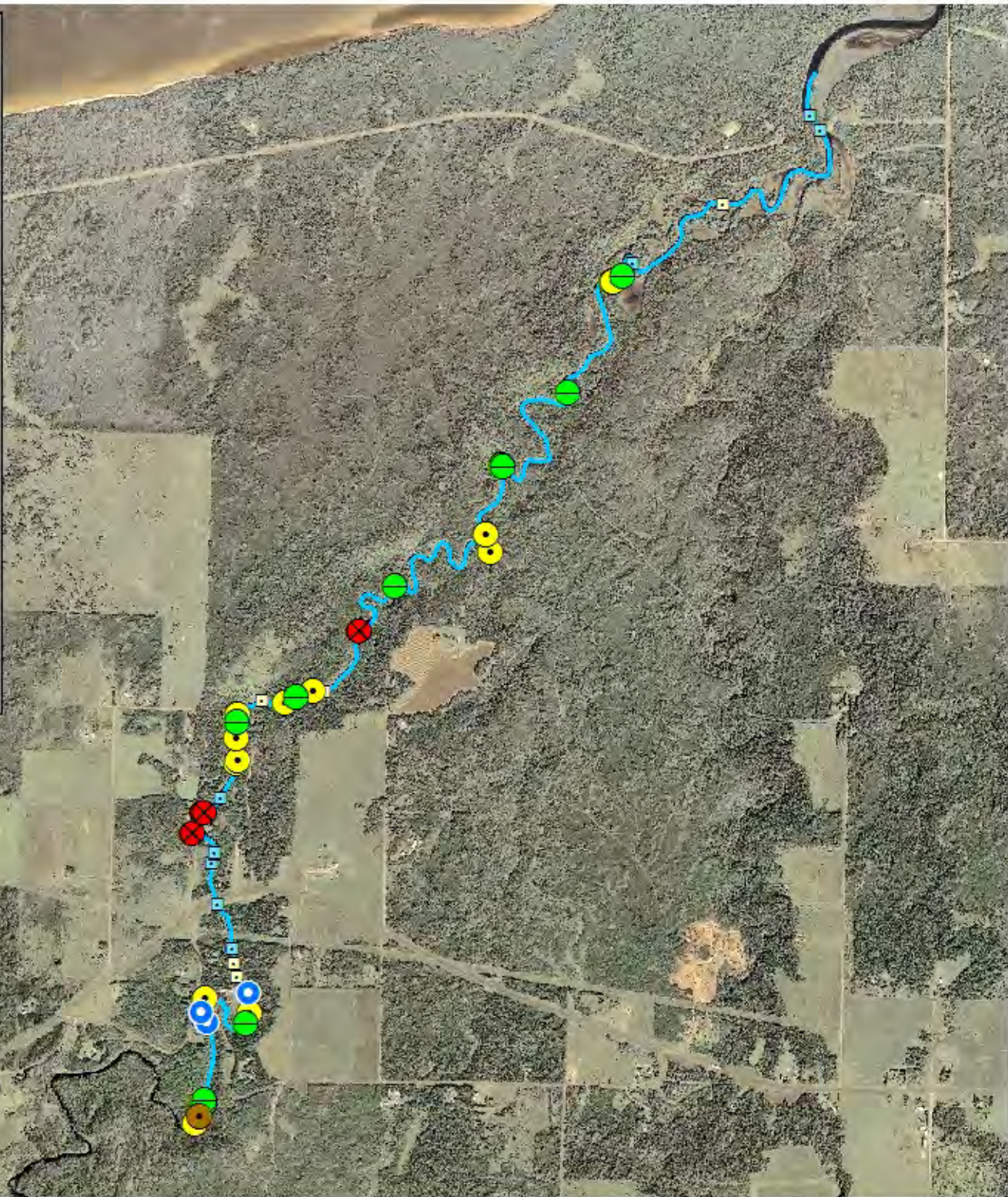
- Little Brown/
Northern Long-eared
- Little Brown
- Northern Long-eared

Eastern Red/ Evening/ Eastern Pipistrelle

- Eastern Red
- Evening
- Eastern Pipistrelle

Low Frequency ≤ 35 kHz

- Hoary
- Big Brown/ Silver-haired
- Big Brown
- Silver-haired



SURVEY RESULTS

Douglas County
Amnicon River 1
18 July 2010
RT 891

Surveyors: J Klemish & S McIntyre
Route Length: 9.12 km
4 Species Encountered
17.35 Passes/ Detector Hr

Time & Weather

Time (PM)	
9:45	2:09 AM
Temperature (F)	
62.6	57.2
Relative Humidity (%)	
94.0	100.0
Wind (m/s)	
1.5	2.1

Notes: BATLAS Rt.
Surveyed S to N. Detector off from
11:26p-12:12a & 12:18-12:32a.

