

Acoustic Bat Encounters




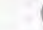
Survey Route

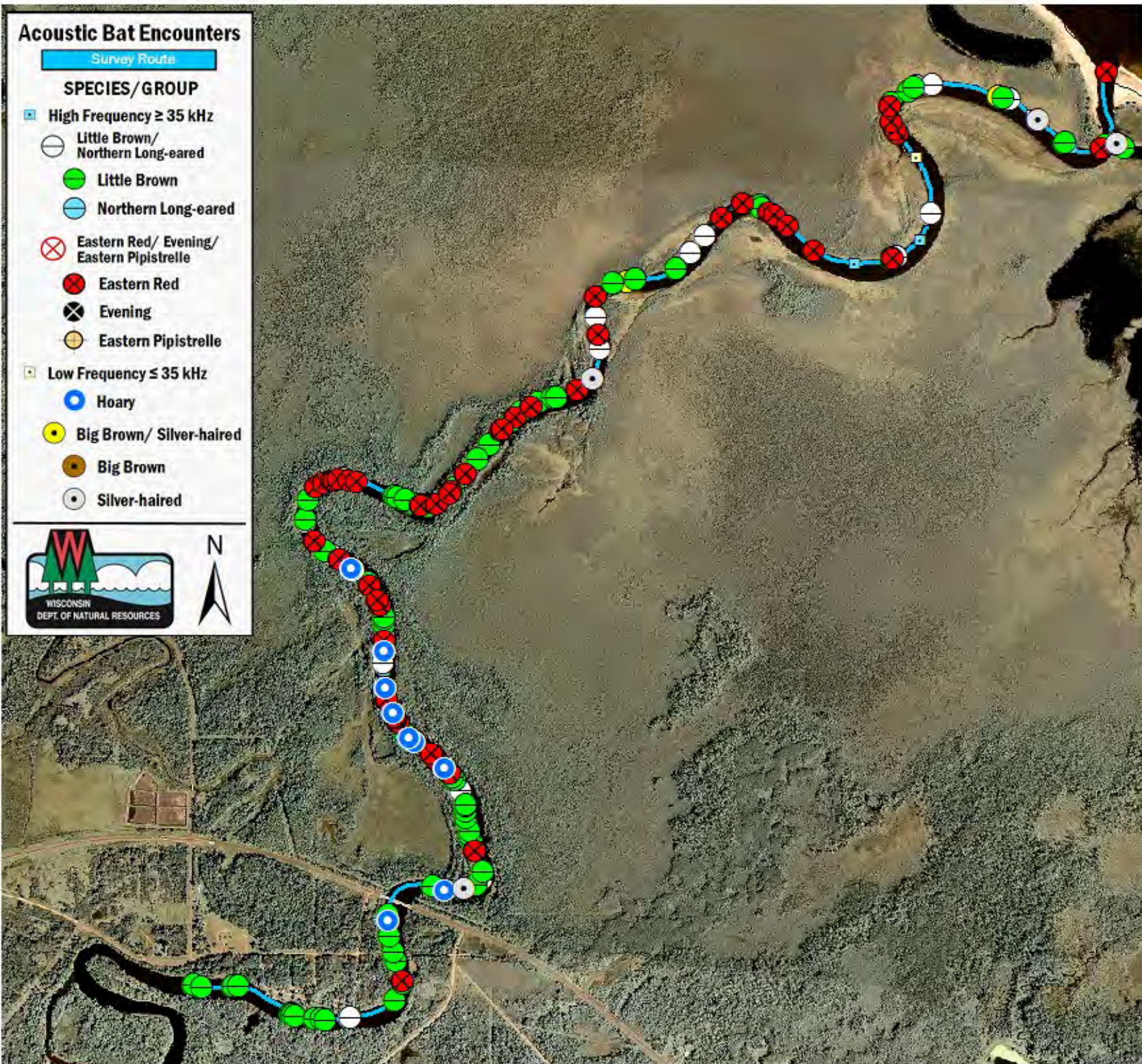
SPECIES/GROUP

High Frequency ≥ 35 kHz

-  Little Brown/
Northern Long-eared
-  Little Brown
-  Northern Long-eared
-  Eastern Red/ Evening/
Eastern Pipistrelle
-  Eastern Red
-  Evening
-  Eastern Pipistrelle

Low Frequency ≤ 35 kHz

-  Hoary
-  Big Brown/ Silver-haired
-  Big Brown
-  Silver-haired



SURVEY RESULTS

Ashland County

Bad River 3

15 July 2010

RT 893

Surveyors: J Klemish,
S McIntyre & N Kilger

Route Length: 8.3 km

4 Species Encountered

112.03 Passes/Detector Hr

Time & Weather

Time (PM)

9:29 11:37

Temperature (F)

71.1 70.0

Relative Humidity (%)

68.0 71.0

Wind (m/s)

3.1 2.6

Notes: BATLAS Rt.
Surveyed SW to NE.

