



SURVEY RESULTS

Oconto County

Chute Pond

20 July 2010

RT 912

Surveyors: D Romback & R Novy

Route Length: 7.49 km

5 Species Encountered

89.16 Passes/Detector Hr

Time & Weather

Time (PM)

9:09 10:56

Temperature (F)

67.1 64.1

Relative Humidity (%)

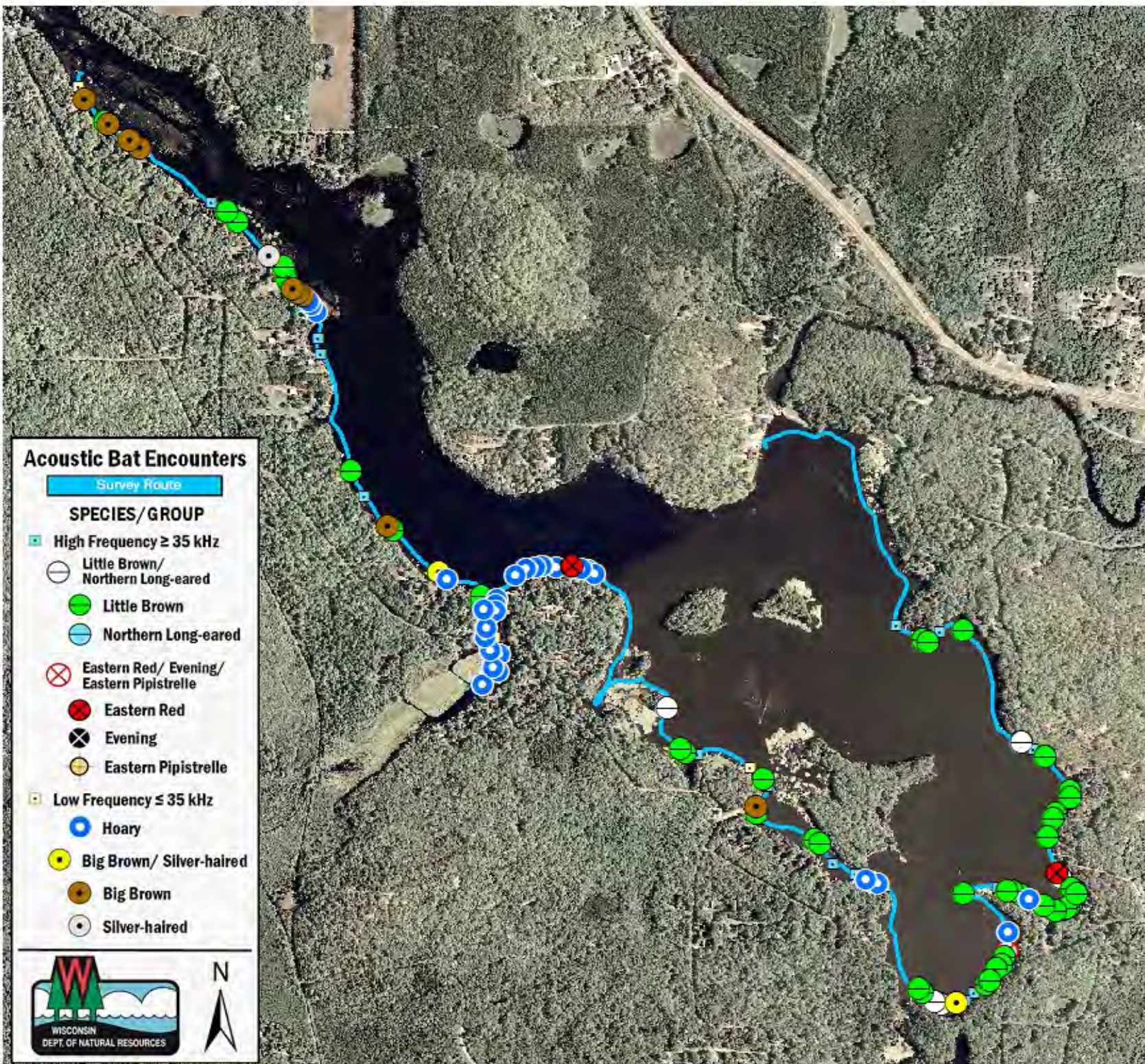
94.0 95.0

Wind (m/s)

0.0 0.0

Notes: BATLAS Rt.

Survey completed clockwise.



Acoustic Bat Encounters

Survey Route

SPECIES/GROUP

High Frequency ≥ 35 kHz

Little Brown/
Northern Long-eared

Little Brown

Northern Long-eared

Eastern Red/ Evening/
Eastern Pipistrelle

Eastern Red

Evening

Eastern Pipistrelle

Low Frequency ≤ 35 kHz

Hoary

Big Brown/ Silver-haired

Big Brown

Silver-haired

