



SURVEY RESULTS

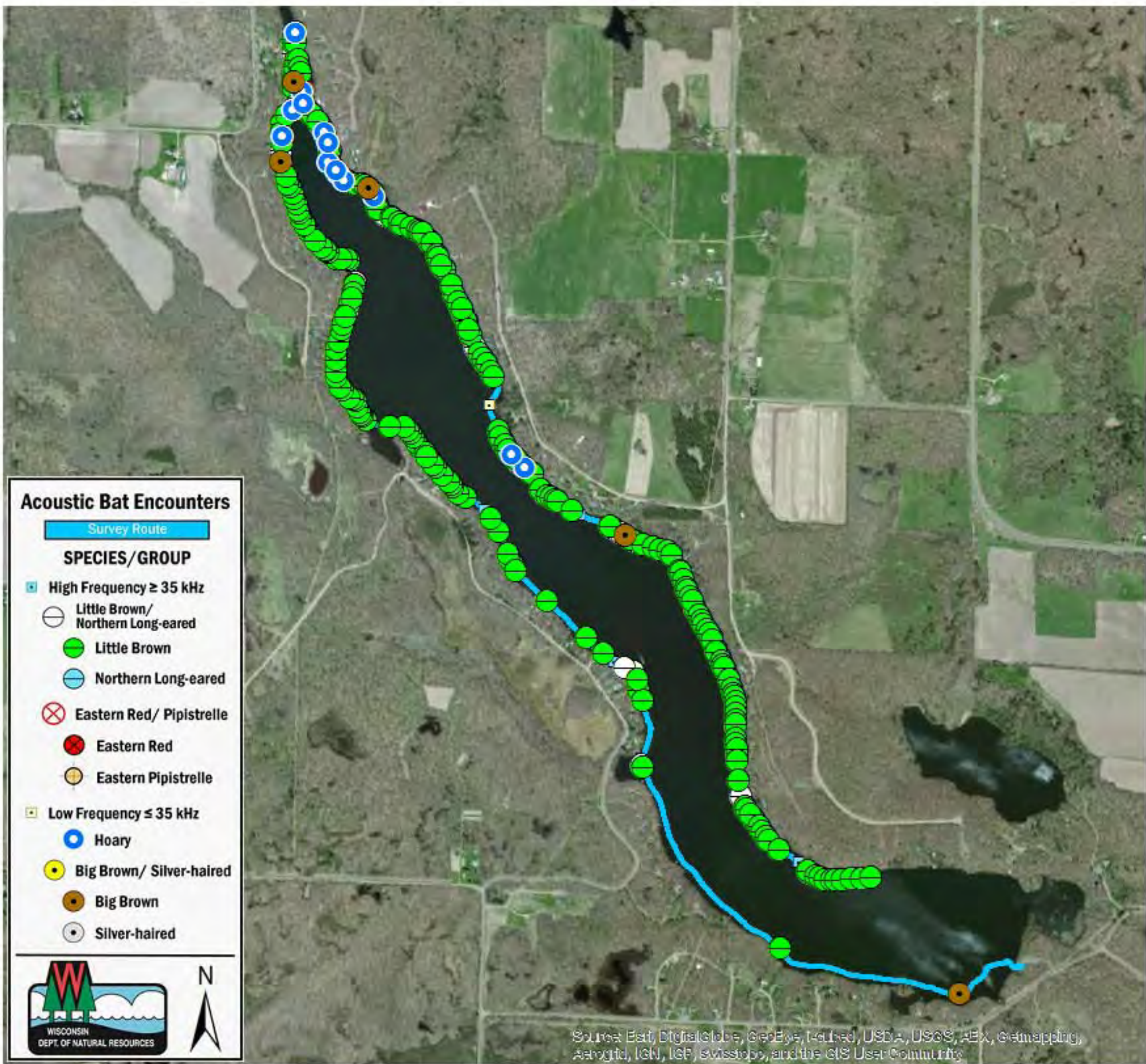
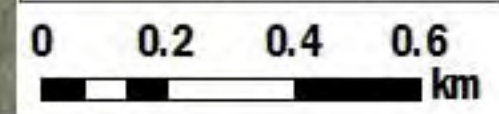
Barron County
Sand Lake
16 July 2010
RT 928

Surveyors: D & J Soine
 Route Length: 8.41 km
 3 Species Encountered

Time & Weather

Time (PM)	
9:31	11:38
Temperature (F)	
75.0	79.7
Relative Humidity (%)	
67.0	58.0
Wind (m/s)	
4.1	4.1

Notes: BATLAS Rt.
 Surveyed Clockwise.



Acoustic Bat Encounters

- Survey Route**
- SPECIES/GROUP**
- High Frequency ≥ 35 kHz
 - Little Brown/
Northern Long-eared
 - Little Brown
 - Northern Long-eared
 - ⊗ Eastern Red/ Pipistrelle
 - Eastern Red
 - Eastern Pipistrelle
 - Low Frequency ≤ 35 kHz
 - Hoary
 - Big Brown/ Silver-haired
 - Big Brown
 - Silver-haired



Source: Esri, DigitalGlobe, GeoEye, Earthstar (United States), USDA, USGS, AeroGRID, IGN, IGF, swisstopo, and the GIS User Community