



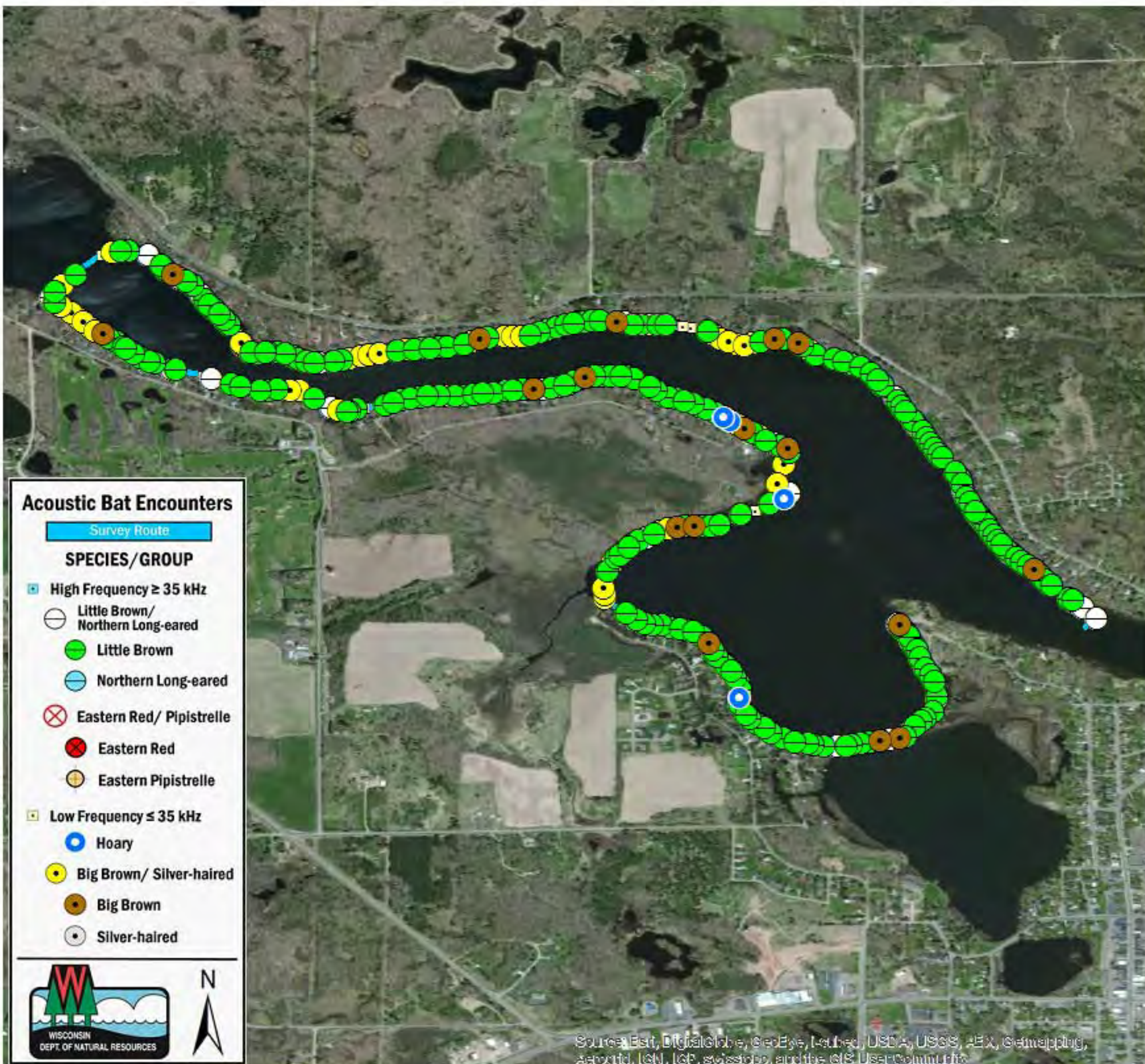
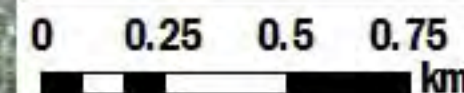
SURVEY RESULTS

Barron County
Beaver Dam Lake
17 July 2010
RT 929
 Surveyors: D & J Soine
 Route Length: 9.24 km
 3 Species Encountered

Time & Weather

Time (PM)	
11:24	12:56 AM
Temperature (F)	
65.4	65.8
Relative Humidity (%)	
94.0	92.0
Wind (m/s)	
1.5	3.6

Notes: BATLAS Rt.
 Surveyed Clockwise. Modified route due to thunderstorms.



Acoustic Bat Encounters

Survey Route

SPECIES/GROUP

- High Frequency ≥ 35 kHz
 - Little Brown/Northern Long-eared
 - Little Brown
 - Northern Long-eared
 - ⊗ Eastern Red/ Pipistrelle
 - Eastern Red
 - Eastern Pipistrelle
- Low Frequency ≤ 35 kHz
 - Hoary
 - Big Brown/ Silver-haired
 - Big Brown
 - Silver-haired



Source: Esri, DigitalGlobe, GeoEye, Earthstar, USDA, USGS, AeroGRID, IGN, IGP, swisstopo, and the GIS User Community