

Acoustic Bat Encounters

Survey Route

SPECIES/GROUP

- High Frequency ≥ 35 kHz
 - Little Brown/
Northern Long-eared
 - Little Brown
 - Northern Long-eared
 - ⊗ Eastern Red/ Pipistrelle
 - Eastern Red
 - Eastern Pipistrelle
- Low Frequency ≤ 35 kHz
 - Hoary
 - Big Brown/ Silver-haired
 - Big Brown
 - Silver-haired



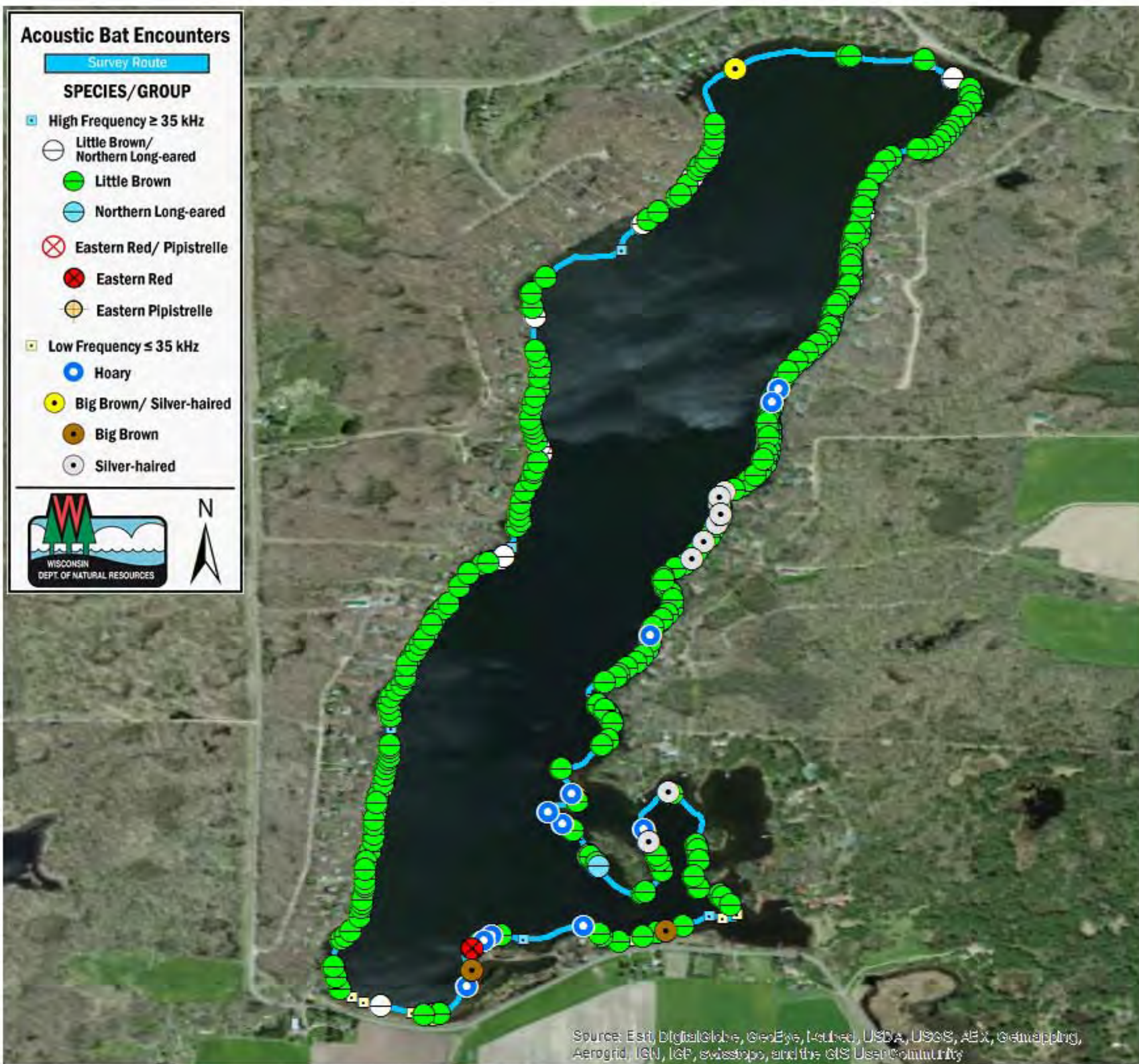
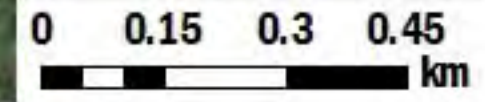
SURVEY RESULTS

Polk County
Pipe Lake
18 July 2010
RT 930

Surveyors: D & J Soine
Route Length: 8.38 km
6 Species Encountered

Time & Weather

| Time (PM) | |
|--|-------|
| 9:28 | 11:35 |
| Temperature (F) | |
| 69.8 | 66.7 |
| Relative Humidity (%) | |
| 89.0 | 92.0 |
| Wind (m/s) | |
| 0.0 | 1.5 |
| Notes: BATLAS Rt. Surveyed Clockwise. | |



Source: Esri, DigitalGlobe, GeoEye, IGN, USDA, USGS, AeroGRID, IGN, IGP, swisstopo, and the GIS User Community