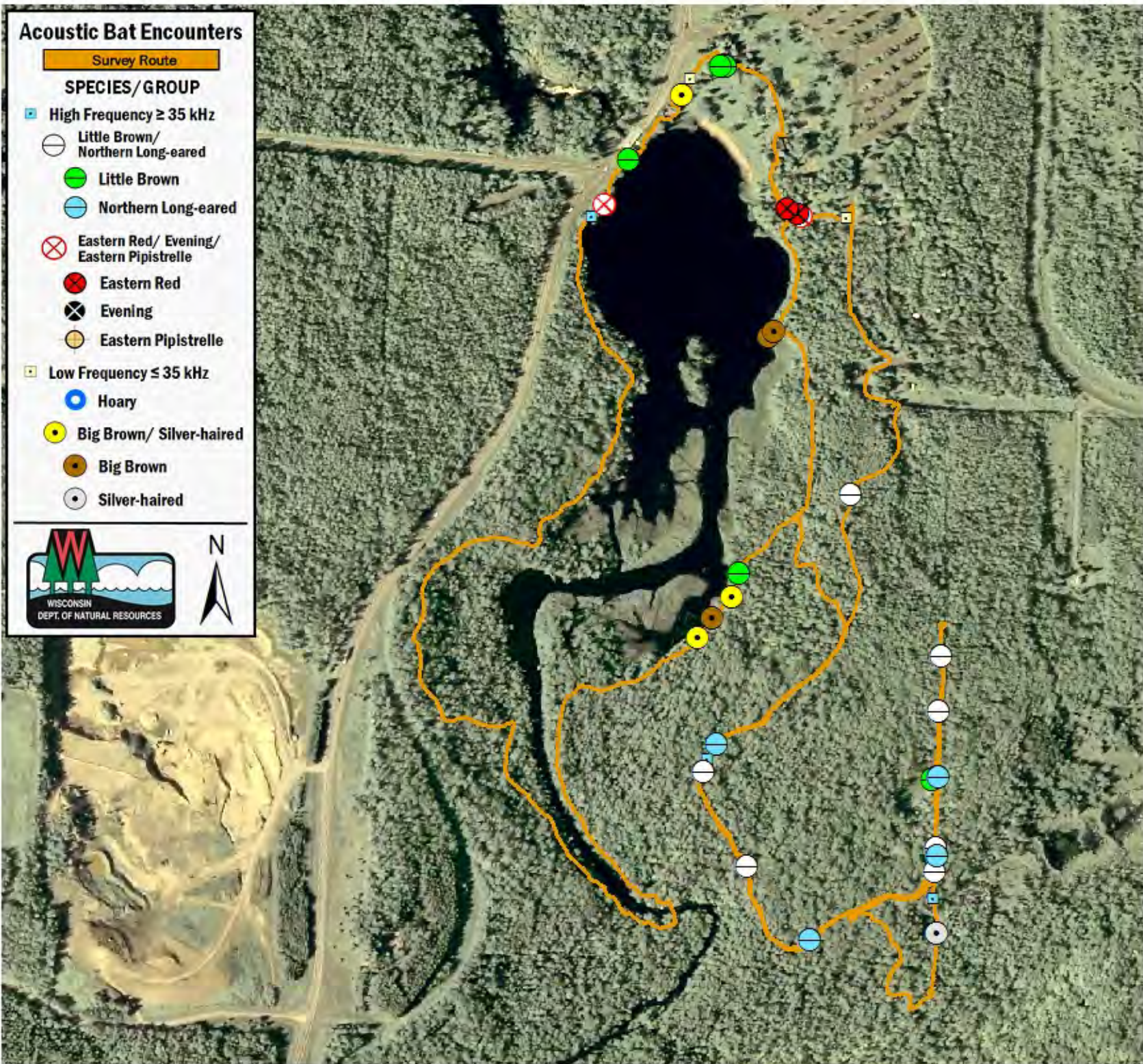


# Acoustic Bat Encounters

Survey Route

## SPECIES/GROUP

- High Frequency  $\geq 35$  kHz
  - Little Brown/  
Northern Long-eared
  - Little Brown
  - Northern Long-eared
  - ⊗ Eastern Red/ Evening/  
Eastern Pipistrelle
  - Eastern Red
  - ⊗ Evening
  - Eastern Pipistrelle
- Low Frequency  $\leq 35$  kHz
  - Hoary
  - Big Brown/ Silver-haired
  - Big Brown
  - Silver-haired



## SURVEY RESULTS

Douglas County  
Pattison State Park  
23 July 2010  
RT 956

Surveyors: J Klemish & S McIntyre

Route Length: 7.14 km

5 Species Encountered

19.29 Passes/Detector Hr

### Time & Weather

Time (PM)

9:32      11:24

Temperature (F)

66.2      66.2

Relative Humidity (%)

78.0      88.0

Wind (m/s)

1.5      1.5

Notes: BATLAS Rt.

Surveyed counter-clockwise.

Southern loop not surveyed.

