

Acoustic Bat Encounters

Survey Route

SPECIES/GROUP

High Frequency ≥ 35 kHz

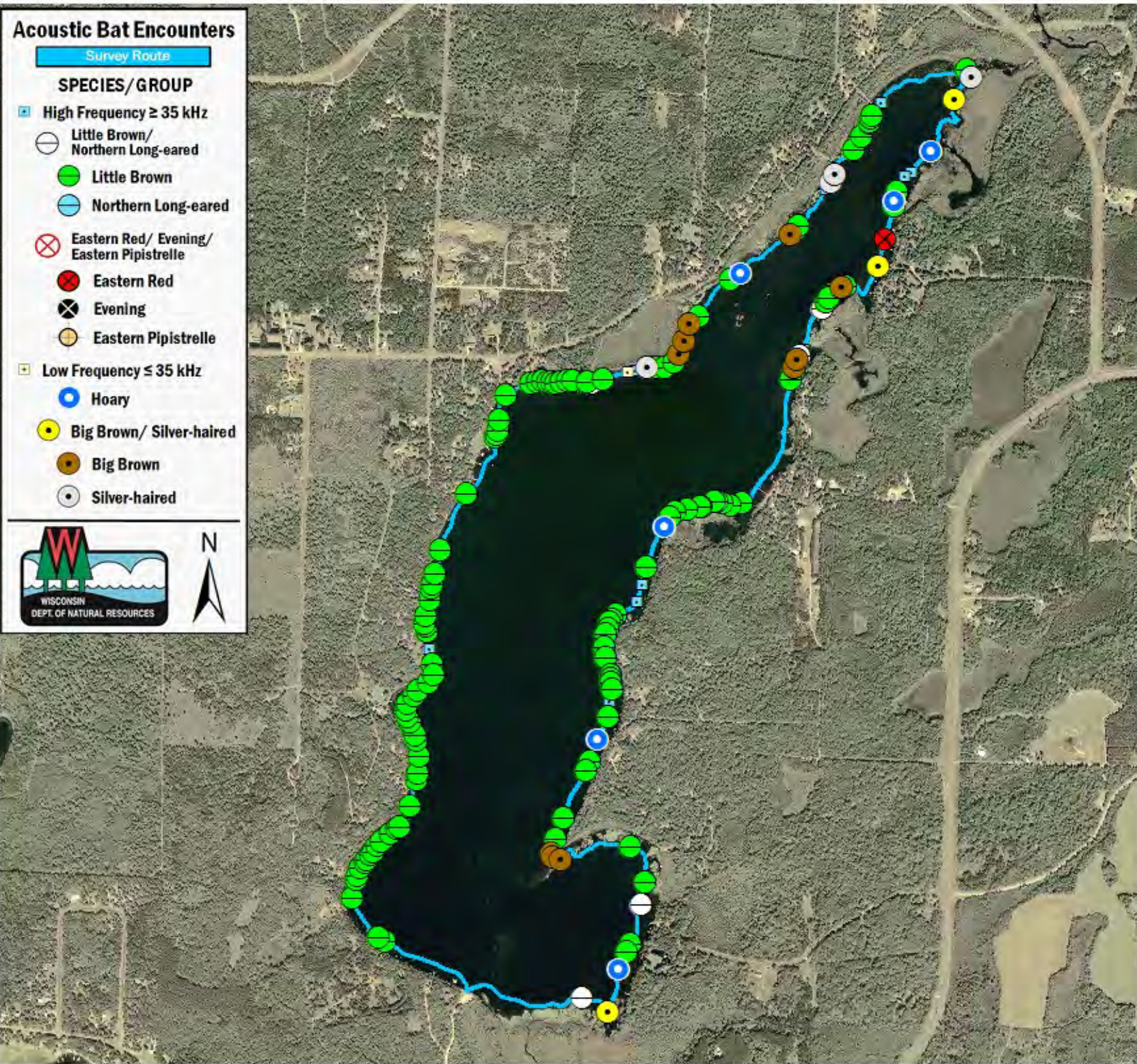
- Little Brown/
Northern Long-eared
- Little Brown
- Northern Long-eared

Eastern Red/ Evening/ Eastern Pipistrelle

- Eastern Red
- Evening
- Eastern Pipistrelle

Low Frequency ≤ 35 kHz

- Hoary
- Big Brown/ Silver-haired
- Big Brown
- Silver-haired



SURVEY RESULTS

Washburn County

Pokegama Lake

25 July 2010

RT 958

Surveyors: S McIntyre & J Klemish

Route Length: 8.59 km

5 Species Encountered

89.78 Passes/Detector Hr

Time & Weather

Time (PM)

9:23 11:42

Temperature (F)

62.1 57.0

Relative Humidity (%)

96.0 93.0

Wind (m/s)

0.0 0.0

Notes: BATLAS Rt.

Survey completed clockwise.

